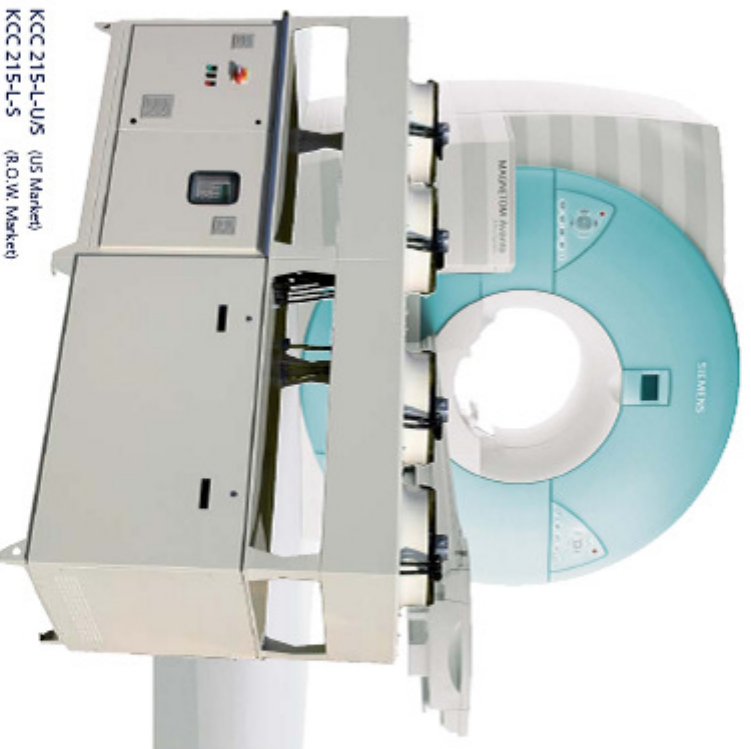


KKT Water Chiller for

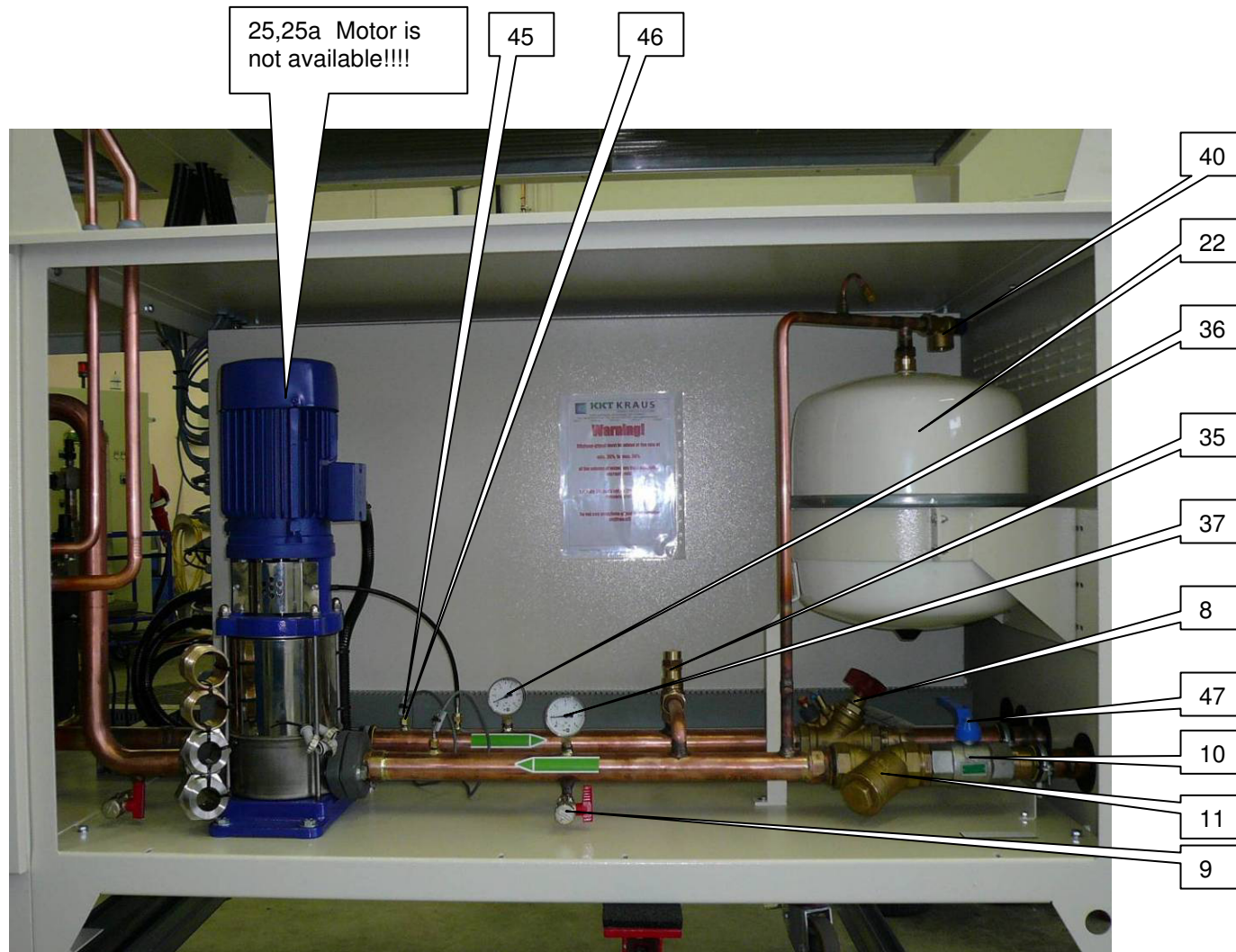
MAGNETOM Avanto 1.5T - A Tim System
MAGNETOM Espree 1.5T - A Tim System
MAGNETOM Trio 3T - A Tim System
MAGNETOM Verio 3T - A Tim System

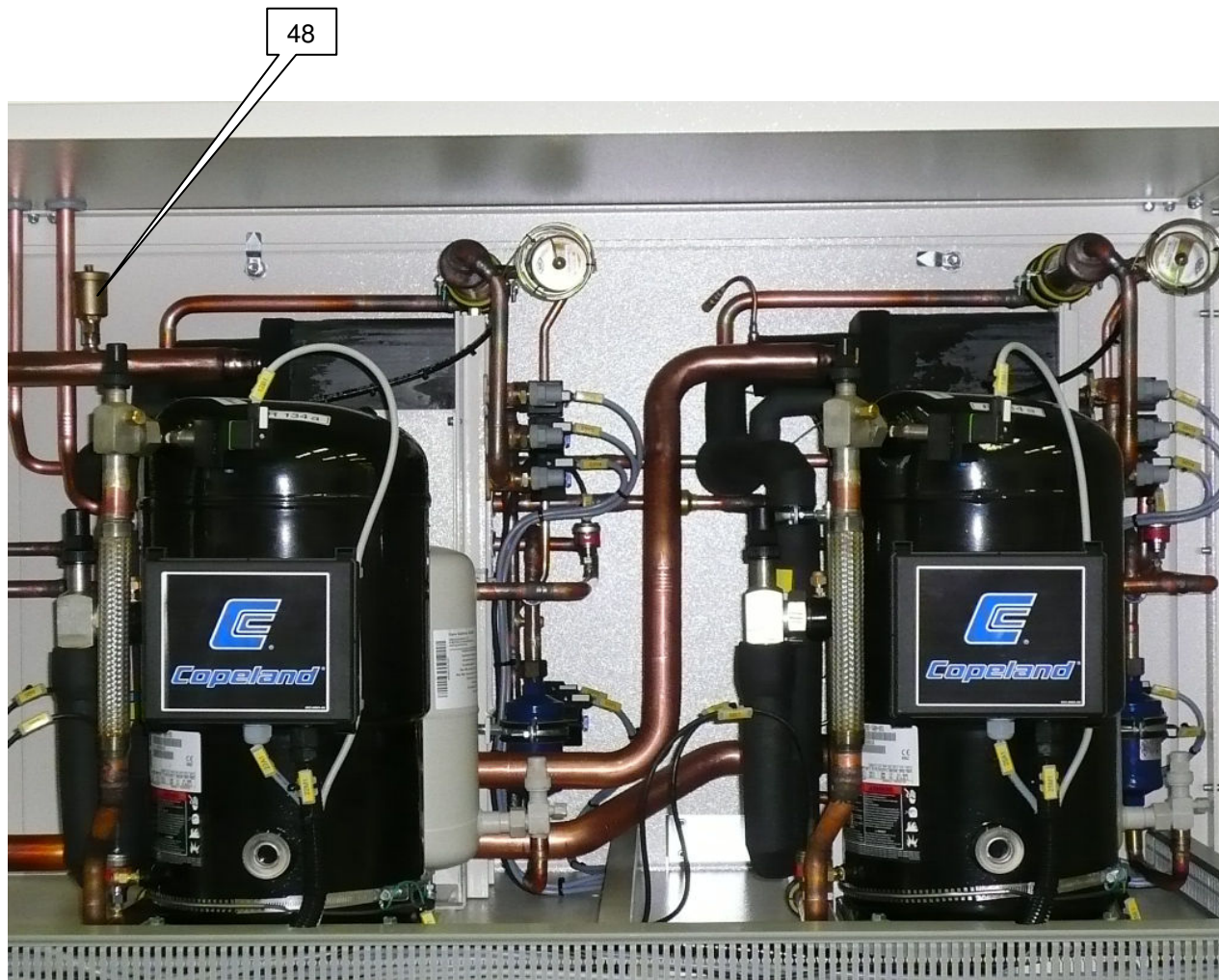


KCC 215-L-U/S (US Market)
KCC 215-L-S (R.O.W. Market)

Siemens Medical Solutions AG



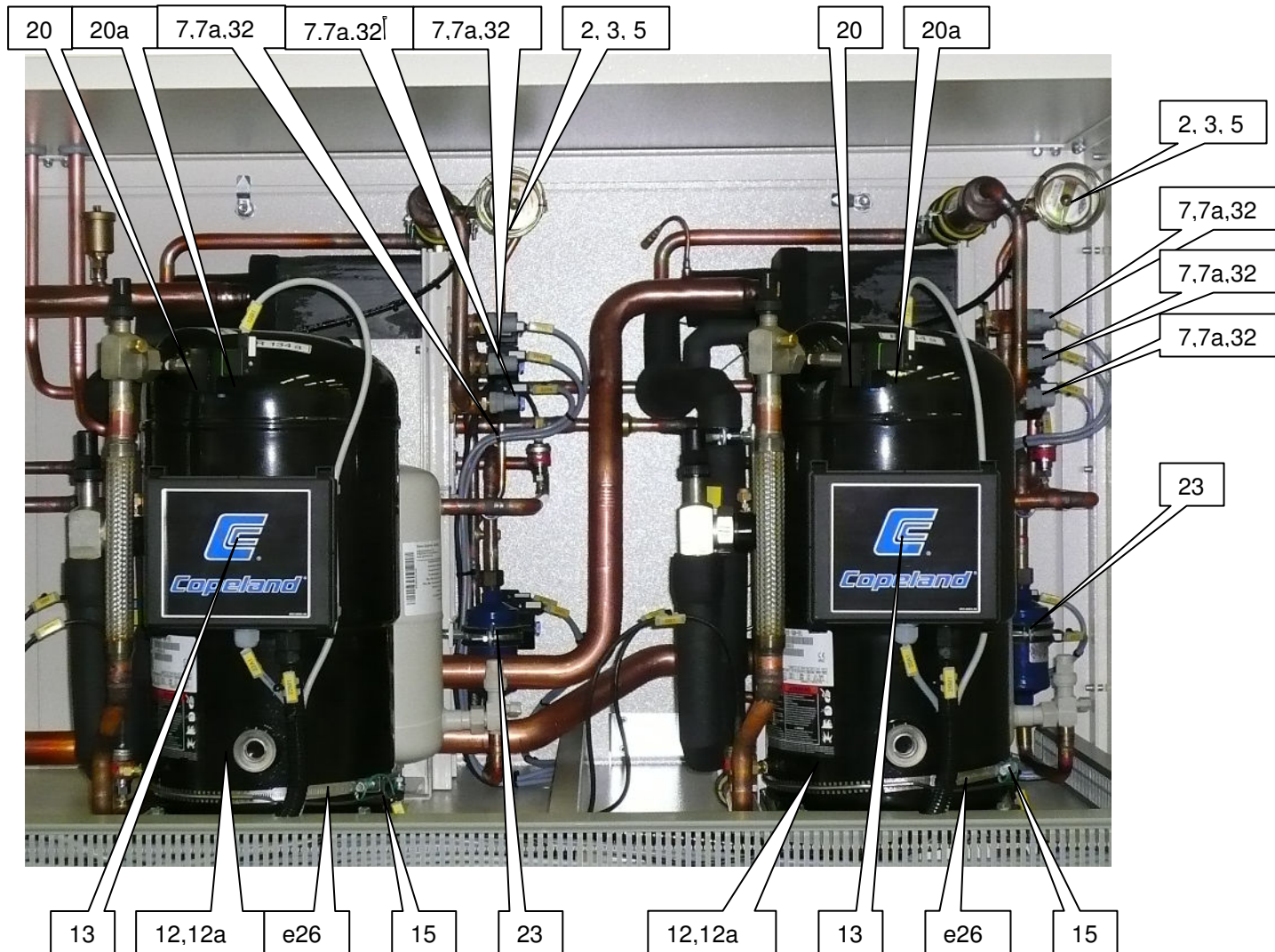


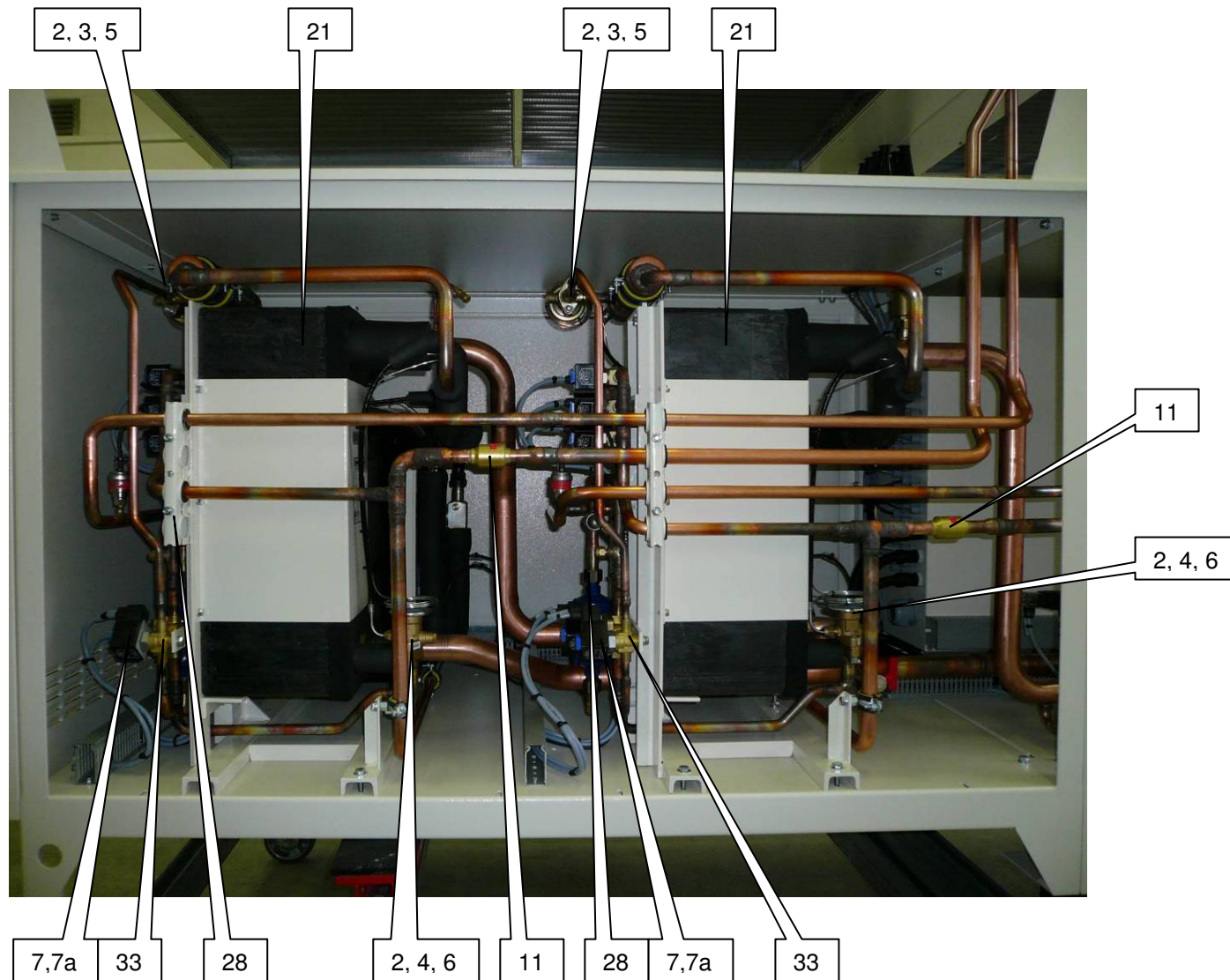


24



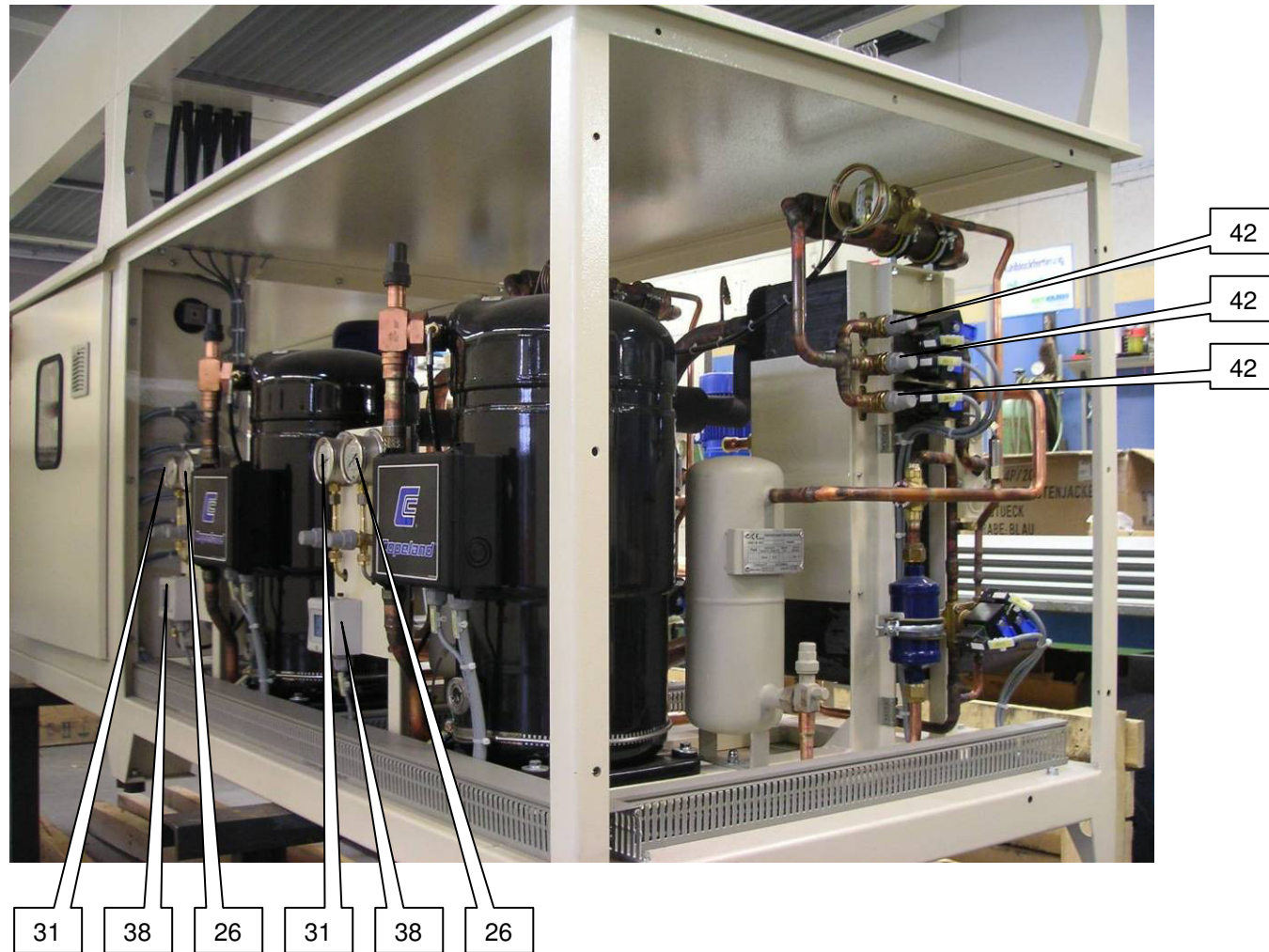
number	Description	type	electrical item designation	number scheme	SAP	PDS	remarks
8	balance valve (flow regulating valve) without insulation	STAD DN 40 1 1/2"		111	65433301	369025	
9	ball valve (drain and fill in valve red handle bar)	KFE DN 15 (KFEKV)		128	65445101	371100	
10	ball valve with handle	MLGVZ 0375014 DN 040/PN 032		124	65446201	371135	
11	Filter strainer	MS 2" - SFM50		122	65463101	376006	
22	expansions receiver KCC 215	A35 Airfix		104	65458601	375030	
24	flow-control	VHS07M2KKTRO1	11B1	137	65471701	377122	is behind the pump
25	high pressure rotary pump 480V/60Hz	IN-V 10-50 - Speck	21M1	100	65548601	389010	
25a	high pressure rotary pump 480V/60Hz	CR 10-05 - Grundfos	21M1	100	65531901	387131	
25	high pressure rotary pump 400V/50Hz	IN-V 10-70 - Speck	21M1	100	61005901		
25a	high pressure rotary pump 400V/50Hz	CR 10-07 - Grundfos	21M1	100	65532001	387132	
35	overflow valve / water circuit	618T 2-12 bar 3/4" (1416185)		109	65432001	369001	
36	pressure gauge water 0-10 bar 1/4" connection lower	M 63810 or 1482.075.003 0-10 bar 1/4" water		37	65493801	383002	Alternate-double scale:65494201
37	pressure gauge water 0-6 bar 1/4" connection lower	M 63810 or 1482.074.003 0-6 bar 1/4" water		37	65493701	383001	Alternate-double scale:65494101
40	safty valve 6bar 3/4" - 1"	SVS206 or 28578		108	65457101	374100	
44	straight thermometer 110x30mm	G3200 0-50°/NG			65498001	384031	only in Chillers till serial number 194
45	swagelock screw connection 1/4"	B-6M0-1-4RT BT		138	65124601	314001	please order KKT-65124601 also
46	temperature sensor	TF PT-100 ID-Nr. 195685 (4m)	9B1, 9B2, 9B3	138	65878301	453011	
47	valve handle for ball valve MLG-V 032-740	MLG DN 40. (blue SW10) #1001795		124	65446201	371135	
48	air bleeder automatic (Braukmann 1/8-3/8)	EA122 54632 SEB		141	65493601	382002	
49	air fix & relief valve (241100)	KV 2020			65465701	376101	only in Chillers till serial number 194







View of a chiller with serial no. below 195



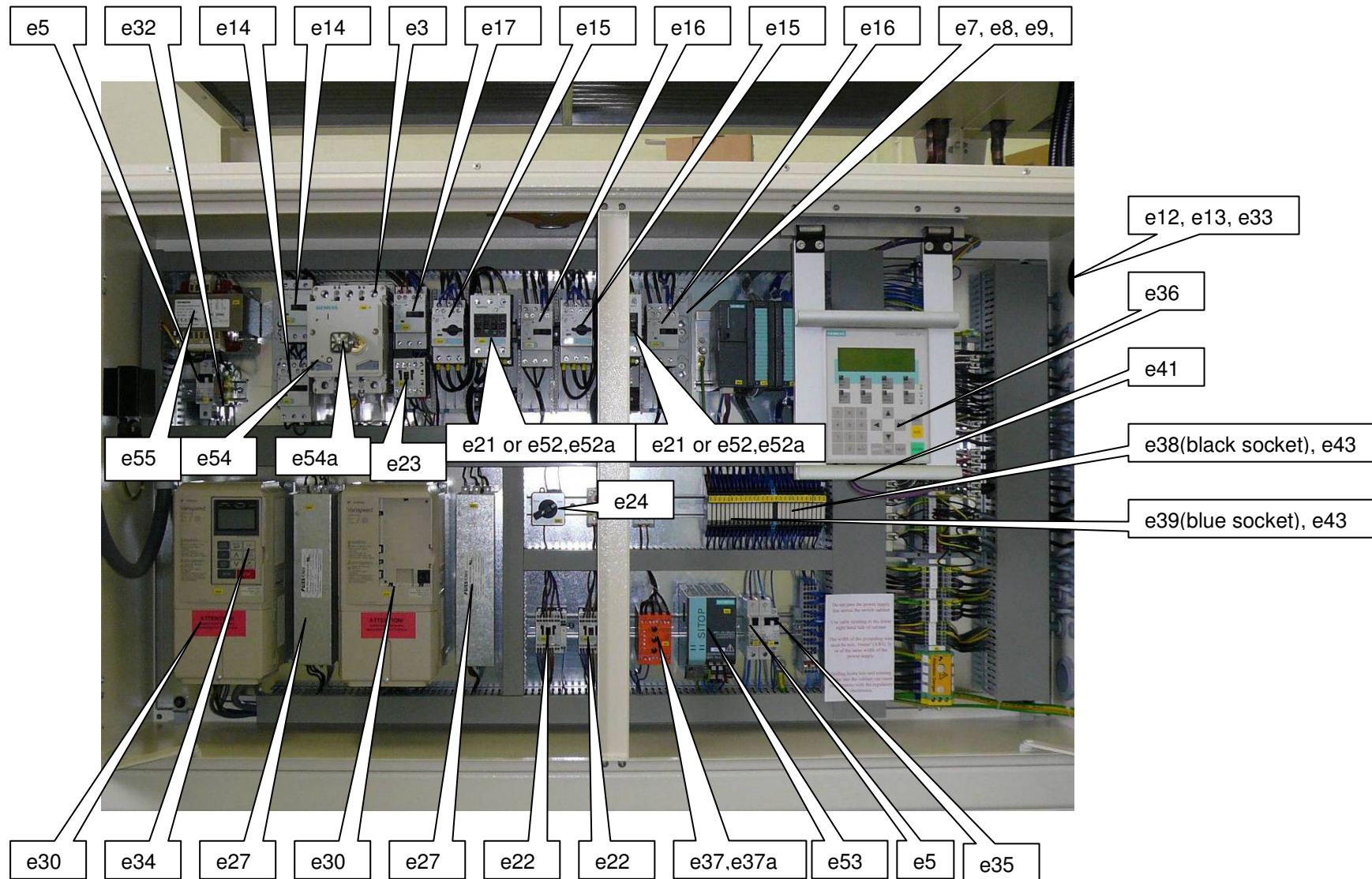
Spare Parts KCC215-L-U/S, KCC215-L-S

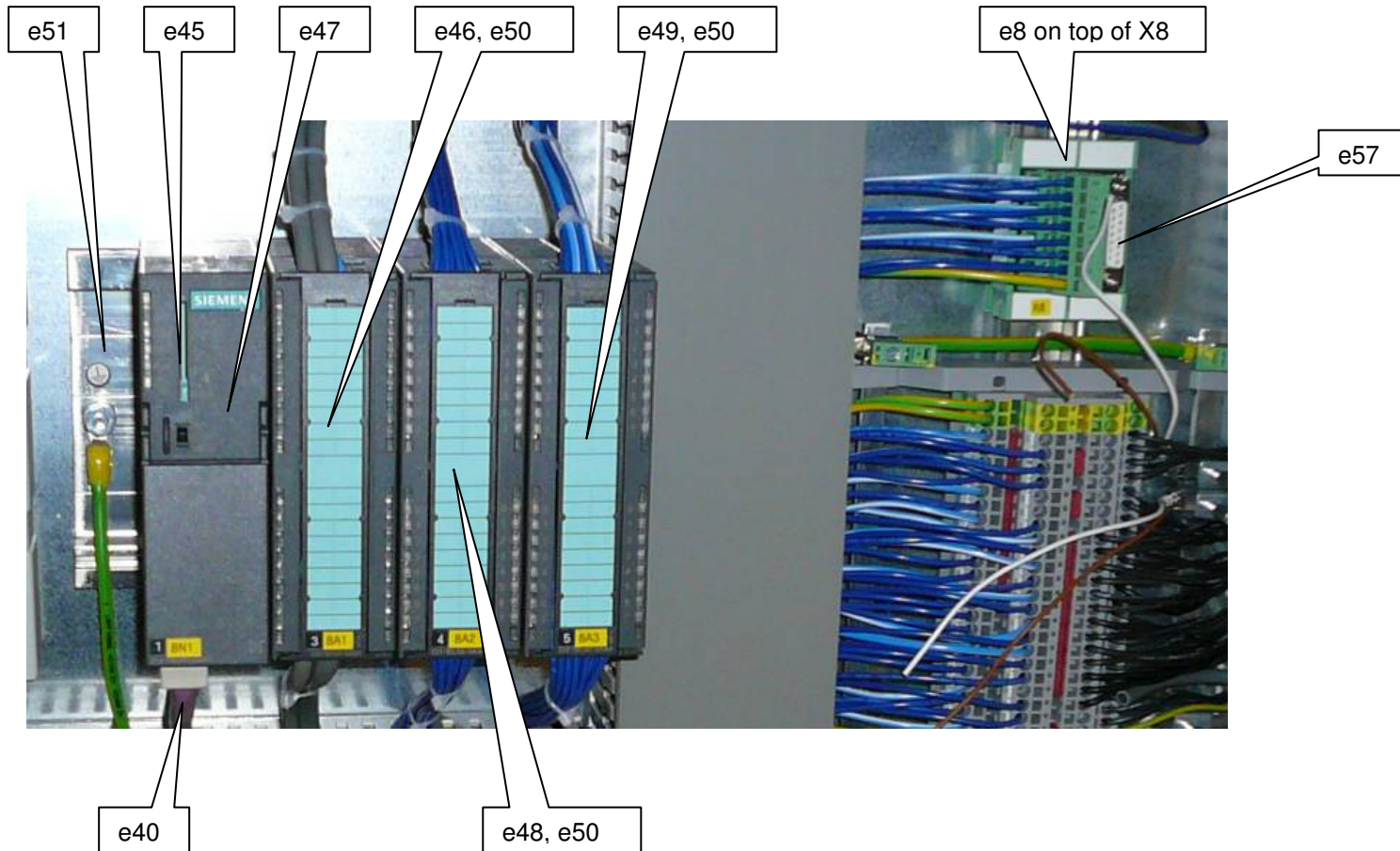


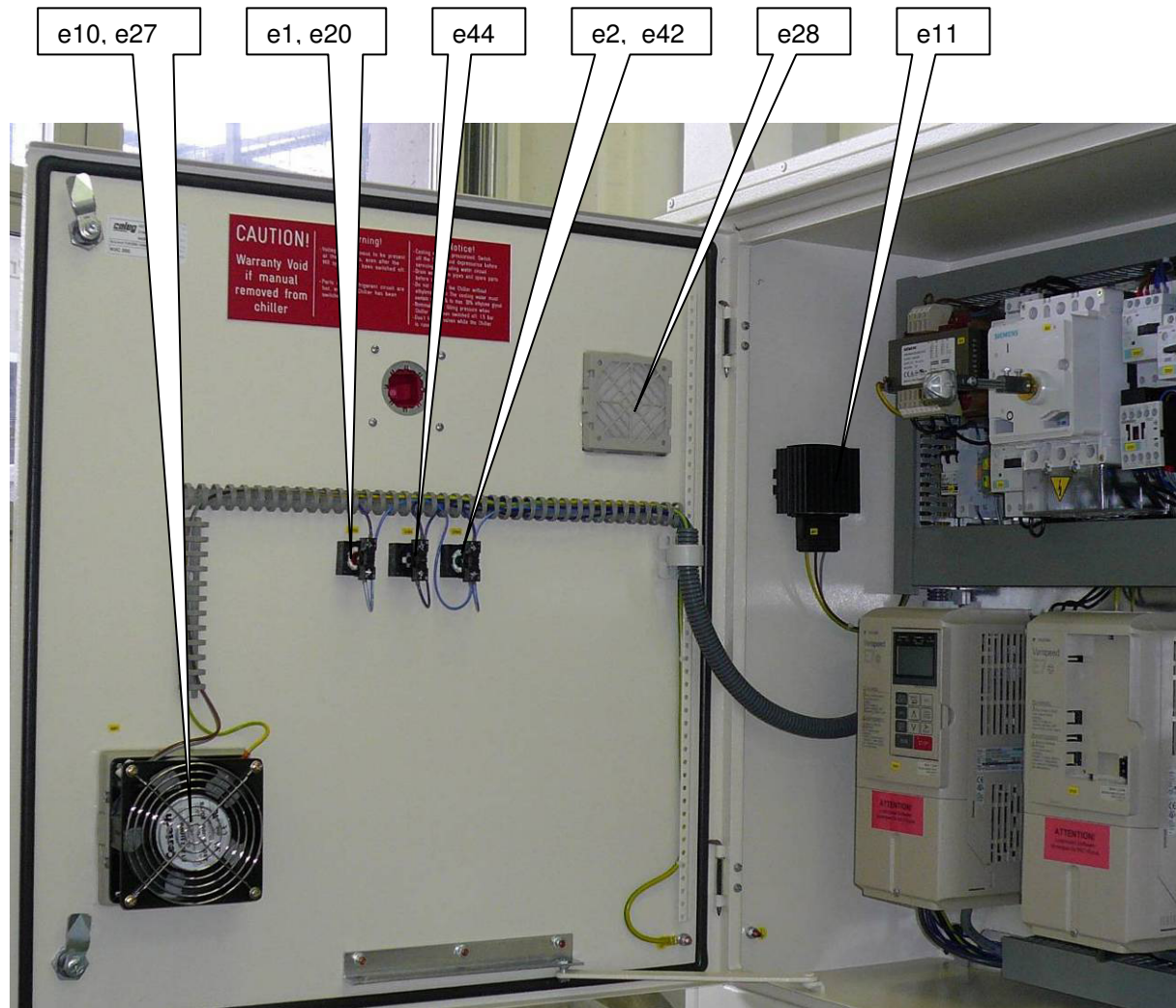
number	description	type	electrical item designation	number scheme	SAP	PDS	remarks
2	alco angle flange 16x22mm	A576MM PCN: 803239		17	66032801	515383	
3	alco cage assembly (inlet)	X22440B4B		17	66027901	515304	
4	alco cage assembly (inlet) for KPC212/KPC215/KCC215	X22440B7B		17	66028201	515307	
5	alco power assembly (TOP)	XB 1019GL-2B		17	66026901	515291	
6	alco power assembly (TOP) for KPC212/KPC215/KCC215	XB 1019MW-1B		17	66022101	515200	
7	alco solenoid coil / DC for KCC 215-L-U/S	ASC-24VDC (VDE 0580) PCN:801 055	23Y1, 23Y2, 23Y3, 23Y4, 23Y5 26Y1, 26Y2, 26Y3, 26Y4, 26Y5	16,12	66044101	522081	
7a	Valve plug with cable	MSUDK-AB1Z-CX5.0			65780801	445301	
11	check valve (non return valve refrigerant)	NRV19 S22 020-1054		10	66082901	532052	
12	Compressor – Don´t forgett Contactor!	ZR 16 M3E TWD 591	22M1,25M1	1	65985701	501113	
12a	Compressor – Don´t forgett Contactor!	ZR 19 M3E TWD 591	22M1,25M1	1	65985801	501114	
13	Compressor motor protector / DC	Kriwan INT 69 SC071-0615-02(13A402)/24VDC with UL	22A1, 25A1	1	65994901	501901	inside connecting box
14	Compressor motor protector	Kriwan INT 69 SCE13A196521/24VDC	22A1, 25A2	1			
15	Compressor rubber mounts (pack up mont.part 7,5-15)	527-0159-00		1	65995401	501910	4 per Compressor

number	description	type	electrical item designation	number scheme	SAP	PDS	remarks
16	condenser refrigerant	VH24 30x26C-27T-4R-1325A-2.0P-9NC connection left		4	66152801	573001	
17	condenser refrigerant	VH24 30x26C-27T-4R-1325A-2.0P-9NC connection right		4	66152701	573000	
18	condenser fan 400V/50Hz D/Y 460V/60Hz D/Y "UL" 60Hz: 0,79/0,51KW; 1,85/0,88A; 50Hz: 1,15/0,66KW; 2,0/1,0; IP 54 CL B; Art.nu. 122004	FE 050-VDD.4.1.6/UL	24M1, 24M2 27M1, 27M2	4	65052401	207020	
20	pressure switch Alco	PS3-B6S 19,2 bar PCN 0715568	12B1, 13B1		66054501	525063	from serial no.195
20a	Pressure switch plug with cable for HD Pressosat		12B1, 13B1		657807B01	445300	
21	Evaporator for KCC 215	M 25-60GLX		3	66159101	580907	
23	filter-dreyer 16mm	ADK-Plus 165		32	66067901	530025	
26	high-pressure gauge	111.60.00.02383 / 110-063-D-000003 -1 / 32 bar cold			66115701	544002	
27	hose for KCC215-L/U/S	19,5 cm (from tee to manometer) 1xW-1G 0,5mm			92801501	091953	
28	inspection glass 16mm	AMI-1SS5 (805 716)		31	66076601	531006	
31	low pressure gauge	111.60.00.02384 or 110-063-D-000004 -1 / 9 bar cold			66115601	544001	

number	description	type	electrical item designation	number scheme	SAP	PDS	remarks
32	magnetic valve hot gas bypass without coil	200RB3T3 (PCN801239)	23Y2, 23Y3, 23Y4, 23Y5 26Y2, 26Y3, 26Y4, 26Y5	12	66040701	522002	
33	magnetic valve without coil	240RA8T5 (PCN801160)	23Y1 26Y1	16	66041201	522007	
38	pressure switch Alco	PS1-B5A PCN: 4353300	12B1, 13B1	39	66052801	525015	till serial no.194
39	pressure transducers (transmitter)	AKS 3000 # 060G3619	9B4, 9B5, 9B6, 9B7, 24B1, 27B1	44a	66063601	526020	
41	shutt off valve (refrigerant circuit)	6012/22 (180020)			66092901	532426	
42	shutt off valve (refrigerant circuit)	6420/M12		15	66090501	532401	







number	description	type	electrical item designation	number scheme	SAP	PDS	remarks
e1	accessories for 3SB3 LED lamp, base BA 9S 24V AC/DC, red packing (preferred type)	41 5309 2411	17H2		65693101	423034	
e2	accessories for 3SB3 LED-lamp, base BA9s 24V AC/DC, green	3SB3901-1DA	17H1		65693201	423035	
e3	accessory f. 3VF3 CIRC.-breaker terminal covers IP30, 3-pole for main terminals (1set=2items)	3VF9324-1NB10			65695401	423065	
e4	automatic fuse 1A (inlet)	TCP1 / 07 12 19 4	28F1		65576101	401780	
e5	automatic fuse 1-pol. C2A, dimensioned switching capacity 10Ka (ABL)	1CU2	7F1		65624701	406101	
e6	auxiliary contact for automatic fuse with 1NO/1NC UL-approbation (ABL)	H11U			65627901	406201	
e7	busbar adapter system 108mm wide 60mm system 5+10mm busbar thickness for circuit breaker 3VF3	8US1211-4SB00			65697701	423301	
e8	busbar adapter system 60mm/630 A-System 3-pol. B 54 mm/32 A	32294			65594601	404011	
e9	busbar for plug in relay 6,2mm blue	093.20			65588001	402791	
e10	cabinet fan IP54 150x150x71 with UL 230VAC (100014)	FPF12KR230BE-110	6M1		66582901	802751	
e11	cabinet heater 230V/45W spring connection, for mounting rail 35mm UL approval	HG140	6E1		657987B01	445901	
e12	cable fitting divisible, 1 big nozzle M 63x1,5, IP54, material: black, UL 94VO, halogenfree, siliconfree	KVT63-1 45111			657922B01	445702	
e13	cable nozzle. little 8 to 9 mm, material: grey, UL 94 VO, halogenfree, siliconfree	KT8 45208			65795001	445703	
e14	circuit breaker 1,1...1,6A N-rel. 21A, size S00 motor protection class 10, screw connection, standard breaking capacity (preferred type)	3RV 1011-1AA10	5Q2, 5Q3		65661701	420230	
e15	circuit breaker 20,0...25,0A N-rel. 325A, size S00 motor protection class 10, screw connection, standard breaking capacity (preferred type)	3RV 1021-4DA10	22Q1, 25Q1		65664601	420360	

Number	description	type	electrical item designation	number scheme	SAP	PDS	remarks
e16	circuit breaker 3,5...5,0A N-rel. 52A, size S00 motor protection class 10, screw connection, standard breaking capacity (preferred type)	3RV 1011-1FA10	24Q1, 27Q1		65663101	420280	
e17	circuit breaker, 4,5...6,3A N-rel. 82A, size S00 motor protection, class 10 screw connection standard breaking capacity (preferred type)	3RV 1011-1GA10	21Q1		65663301	420290	
e18	COMBICON - plug unit with teaded flange, 3-pole (pin) at grid 5,08mm for 35mm mounten rail	FKCVR2,5/3-STF-5,08 / 18 74 11 2	X6, X7		65579601	401911	
e19	COMBICON - plug unit with teaded flange, 3-pole (pin) at grid 5,08mm for 35mm mounten rail	UMSTBVK2,5/3-GF-5,08 / 17 87 93 7	X6, X7		65579501	401910	
e20	complete unit, round illuminated pushbutton lamphold BA 9S red	3SB3204-6AA20	17H2		65690901	423001	
e21	contactor AC-3 15 KW/400V AC 230V 50/60Hz 3-pole, size S2 screw connection (preferred type)	3RT 1034-1AL20	22K3, 25K3		65658801	420061	
e22	contactor relay, 3NO+1NC DC 24V cage clamp, size S00 (preferred type)	3RH1131-2BB40	22K1, 25K1		65666901	420517	
e23	contactor, AC-3 4kW/400V 1 NO, AC 230V, 50/60Hz 3-pole, size S00 screw connection (preferred type)	3RT 1016-1AP01	21K1		65656901	420015	
e24	control switch (change over) 1-pole 60° A-O-H 48 x 48mm for mounting rail 35mm	U1/8VZ/NS/X70A/F64 3	14S1		65617001	405002	
e25	copper busbar (08240/01619)	length: 613 mm 5 x 15 mm			65608101	404101	
e26	crank case heater	230V, 50-60 Hz8013479 018-0036-00	22E1, 25E1		65994301	501872	see kpic1
e27	EMC-filter for KCC 215	3F460-010.250	24A1, 27A1		65964001	464731	
e28	exchange filter for PF/PFA 1000, 85 x 85mm 150g/m ²				66489501	692010	
e29	exchange filter for PF/PFA 2000, 115x115mm 350g/m ²				66489601	692011	
e30	frequency inverter 2,2 KW, 5,3A	CIMR-E7-C42P21 without EMV-filter	24U1, 27U1		65963601	464701	
e31	fuse clamp DIN 72 581 with LED 24V (socket)	UK6-FSI/C-LED24 / 3001938	28F1		65559901	401280	
e32	grip	UK5-MTK-P/P			65559501	401231	

number	description	type	electrical item designation	number scheme	SAP	PDS	remarks
e33	hexagon nut for cable fitting M 63x1,5, material: black, Polystyrol	KGMM63x1,5 52288			657922B01	445702	
e34	LCD-display for E 7	JYOP-160	24U1, 27U1		65963901	464721	
e35	min. circuit breaker 400V 6KA, B-characterist., 1 pole, 6 A/ N-Type AC	1BU6	5F1		65624001	406011	
e36	operator panel OP7/DP LC display, backlit LED 4 lines, 20 characters/line SIMATIC S7, M7 profibus-DP 1,5 MBAUD UL/CSA-listed	6AV3607-1JC20-OAX1	8N2		65676701	420891	
e37	phase monitoring relay, power supply: 480V 50/60Hz / monitoring voltage: 480V 50/60Hz /	BD9080.12/61	5A1		657955B01	445802	
e37a	phase monitoring relay, power supply: 400V 50/60Hz / monitoring voltage: 400V 50/60Hz /	BD9080.12/61	5A1		657954B01	445801	
e38	plug in relay complete with socket, width 6,2mm spring connection, 1 change over contact 6A/250V, operate voltage 24VDC, black socket, UL approval	38.61.0.024.0062 incl. 93.51.0.024 + 34.51.7.024.00.10	16K1 - 16K8, 17K1 - 17K6, 18K1, 19K2-19K8		65583801	402071	
e39	plug in relay complete with socket, width 6,2mm spring connection, 1 solid state contact 2A/24VDC (optically coupled), operate voltage 24VDC, blue socket, UL approval	38.91.7.024.09.024 = incl. 93.51.7.024 + 34.81.7.024.9024	19K1		65584201	402091	
e40	PROFIBUS plug with horizontal outlet with programming device interface and switch for SIMATIC cpu	Lapp# 21124051			65826601	447302	
e41	PROFIBUS plug with straight outlet and switch for SIMATIC operate panel	Lapp# 21124054			65826501	447301	
e42	pushbutton lampholder BA9S green, complete unit, round illuminated	3SB 3204-6AA40	17H2		65691101	423003	
e43	relay component	34.51.7.024.00.10			65585201	402301	
e44	round pushbutton with flat pushbutton, black, 1NO, complete unit	3SB3202-0AA11	11S1		65696801	423180	
e45	SIMATIC S7, MICRO MEMORY CARD f. S7-300/C7/ET 200S IM 151 CPU 3,3V, nflash, 64kB	6ES7953-8LF11-OAA0			66980101	420812	
e46	SIMATIC S7-300 analog input SM 331, optically isolated 8AI, 13Bit resolution U/I/resistance, PT100 66 MS module update, 40 pin	6ES7331-1KF00-0AB0	8A1		65674801	420831	

Spare Parts KCC215-L-U/S, KCC215-L-S



number	description	type	electrical item designation	number scheme	SAP	PDS	remarks
e47	SIMATIC S7-300, central unit CPU 314 memory 48kB, slot for MICRO MEMORY CARD	6ES7314-1AG13-0AB0	8N1		65672501	420802	
e48	SIMATIC S7-300, digital input SM 321 optically isolated 32DI, 24V DC (1x32DI) 40-pin	6ES7321-1BL00-0AA0	8A2		65673401	420811	
e49	SIMATIC S7-300, digital output SM 322 optically isolated 32 DO, 24V DC, 0,5A, 40-pin sum of output currents 8A	6ES7322-1BL00-0AA0	8A3		65674401	420822	
e50	SIMATIC S7-300, front connector for signal modules with spring contacts, 40-pin	6ES7392-1BM01-0AA0			65676501	420881	
e51	SIMATIC mountainrail S7-300	6ES7390			65676201	420861	
e52	Softstarter//sirius cushioned starter, size S2, 32A, 18,5 KW 500V (60Hz)	3RW3034-1AB15	22U1, 25U1		65682501	421121	
e52a	Softstarter//sirius cushioned starter, size S2, 32A, 18,5 KW 400V (50Hz)	3RW3034-1AB14	22U1, 25U1		65682601	421122	
e53	sitop modular stabilized load power supply input: 120AC/230-500V output: 24V DC/5A	6EP1333-3BA00	7U1		65698401	423401	
e54	switch-disconnector 3phase 80A with UL508-appobation (switch inside the compartment)	3VF3131-1FQ41-0AA0	5Q1		65665601	420380	
e54a	Complete Handle	3VF9323-1FA00	5Q1		65697401	423250	
e54b	Red handle with yellow panel	8UC6220-3BD	5Q1		65701201	423601	
e55	transformer 1-ph. SITAS-transformer control-//insulating transf. PN=0,4 KVA VDE/UL/CSA PRI 550-525-500-480-440-415-400-380-230-208 V sec 2x115 EN 61558-2-1, -2-2, -2-4 protection IP00 screw connection (preferred type)	4AM4642-8DD40-0FA0	5T1		65681601	421032	
e56	transverse auxiliary switch with screw connection, 2NO (preferred type)	3RV1901-1F			65670101	420721	
e57	VARIOFACE-COMPACT-LINE D-SUB 15pol, female part with treaded flange to spring clamp	UM45-D15SUB/B/ZFKDS / 22 93 67 9	X8		65582201	401975	
e58	varistor AC 24, 48V, DC 24...70V suppressor for mounting onto contactors size S00 (preferred type)	3RT1916-1BB00			65686701	421471	
e59	over voltage protector art.# 924051/S015957	USD 15 FS SB			657943B01	445781	is an external component outside the chiller