

# SIEMENS

Solar protection actuator  
 Sonnenschutzaktor  
 Actionneur de protection solaire  
 Actuador protección solar  
 Attuatore per protezioni solari  
 Protecção Solar para Actuador  
 Gölgelendirme Aktivatörü  
 Привод жалюзи  
 Zonwering actor  
 遮阳执行器



5WG1 543-1DB51

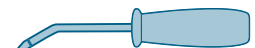
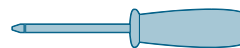
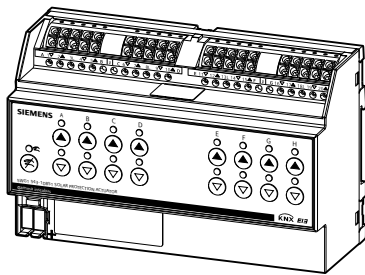


Operating Instructions    Betriebsanleitung    Notice d'utilisation    Instructivo    Istruzioni operative  
 Instruções de Serviço    İşletme kılavuzu    Руководство по эксплуатации    Bedieningshandleiding    使用说明



Contents / Lieferumfang / Etendue de la livraison /  
 Contenido / 供货范围

Required tools / Notwendige Werkzeuge /  
 Outils nécessaires / Herramientas requeridas / 必要工具



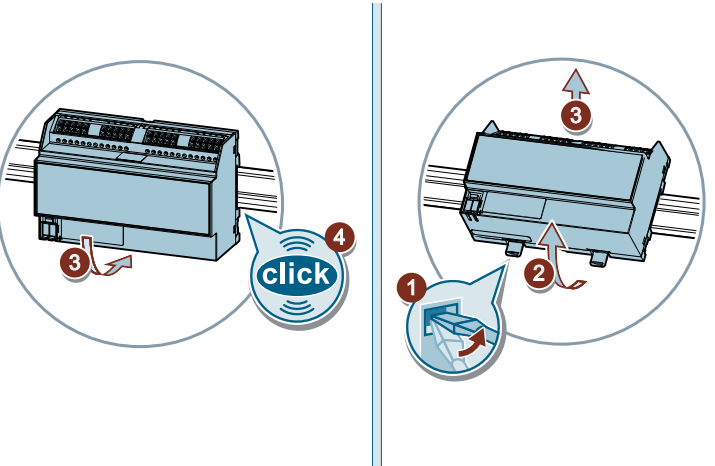
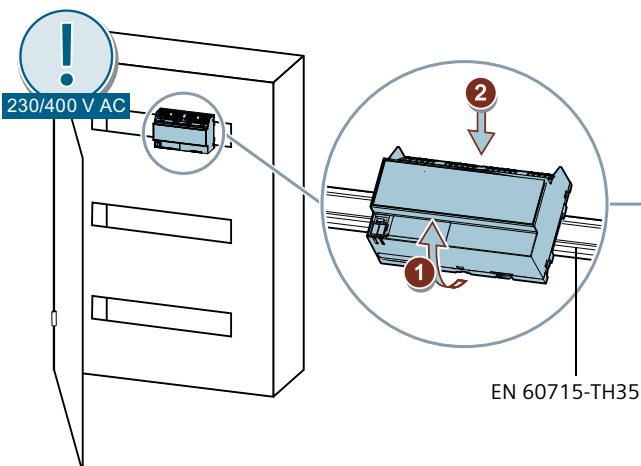
0.6 x 3.5 mm

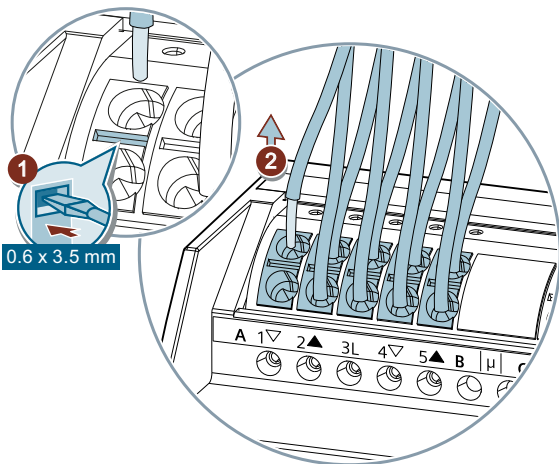
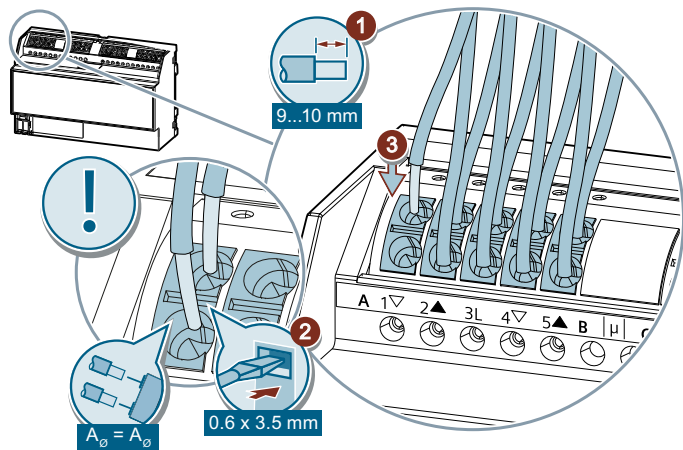
0.6 x 3.5 mm



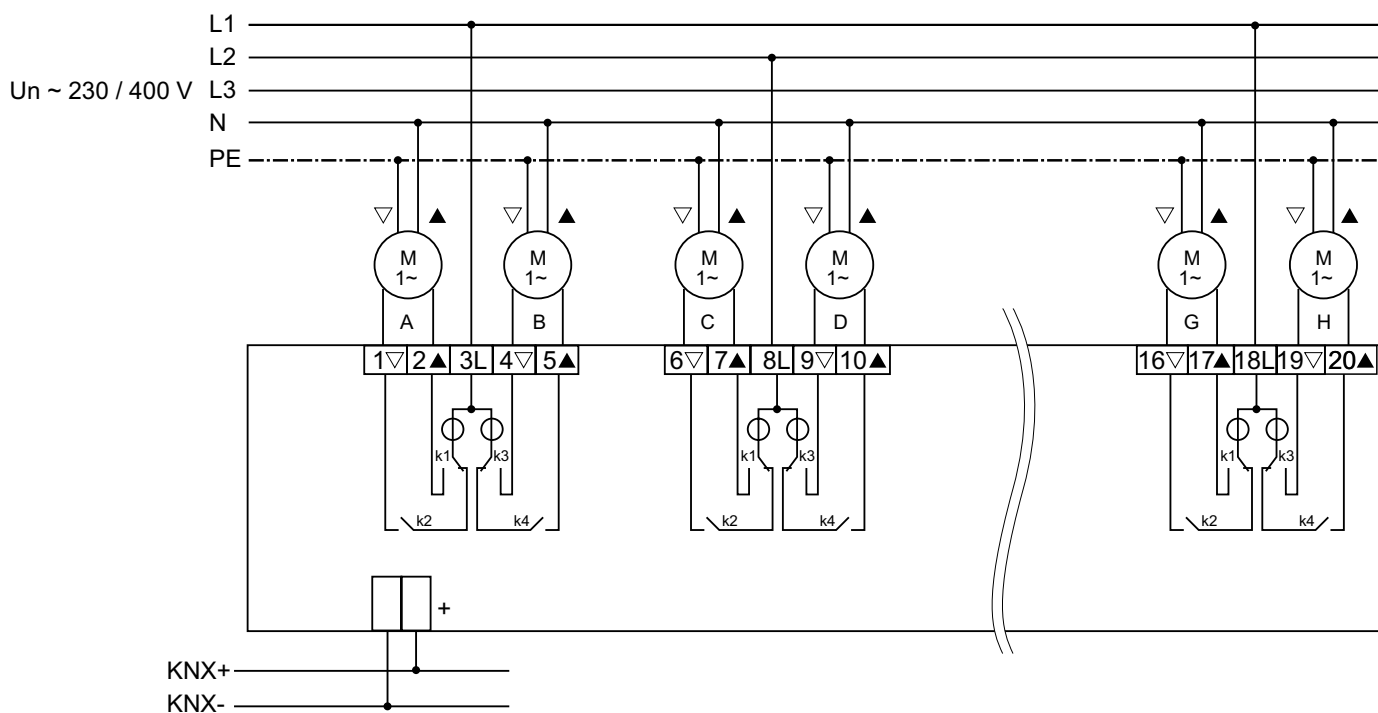
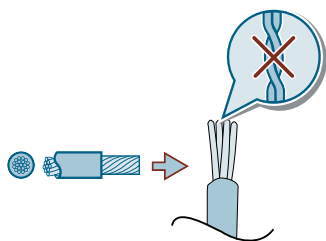
Assembly / Montage / Montage /  
 Montaje / 安装

Removal / Demontage / Démontage /  
 Desmontaje / 拆卸





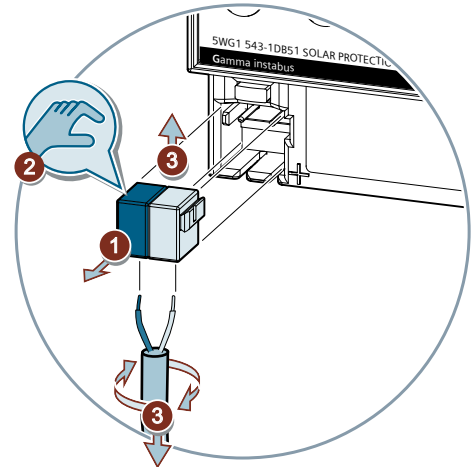
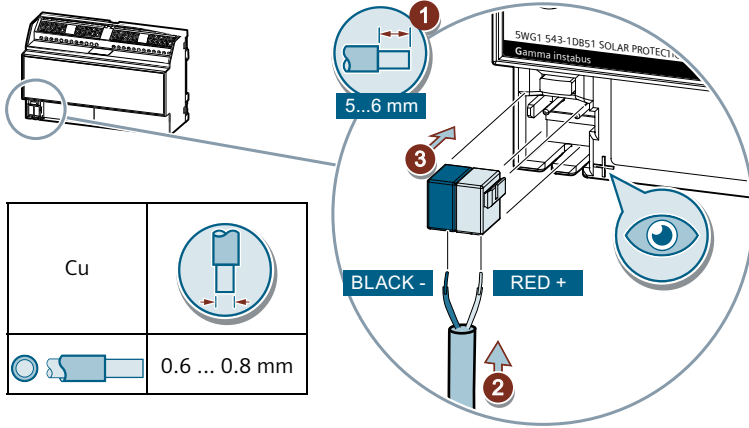
Cu	
	0.5 ... 2.5 mm <sup>2</sup>
	2.5 mm <sup>2</sup>





Connection / Anschluss / Raccordement /  
Conexión / 连接

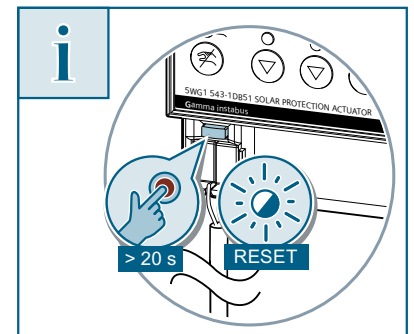
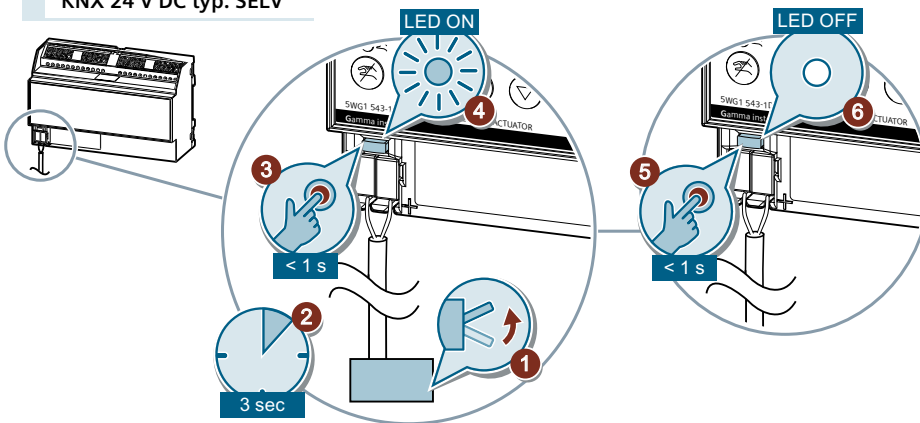
Disconnection / Trennung / D connexion /  
Desconexi n / 断开



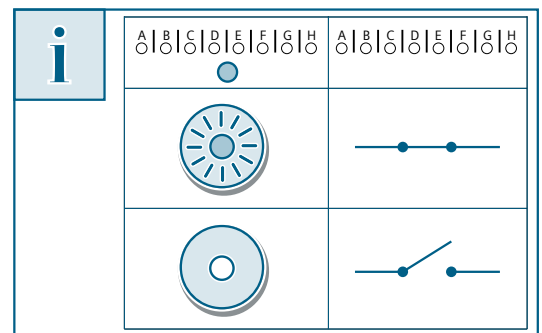
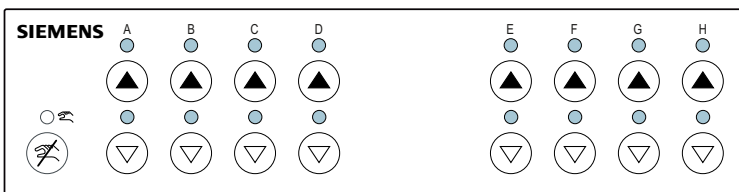
Test / Test / Test / Test / 测试



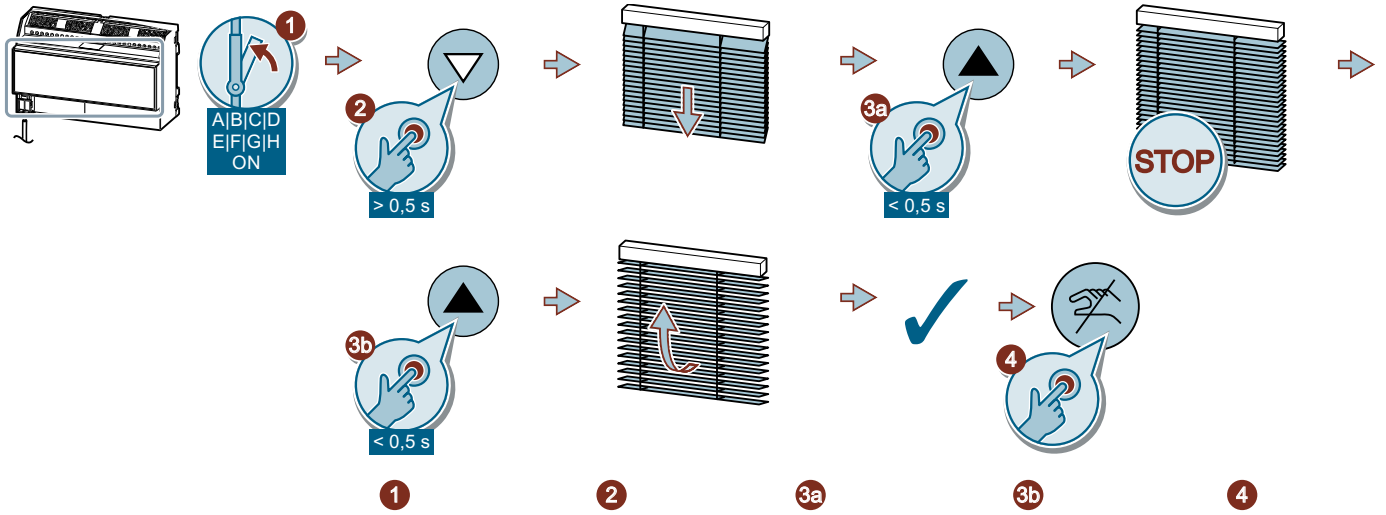
KNX 24 V DC typ. SELV



A|B|C|D|E|F|G|H U<sub>n</sub>~ 230 V



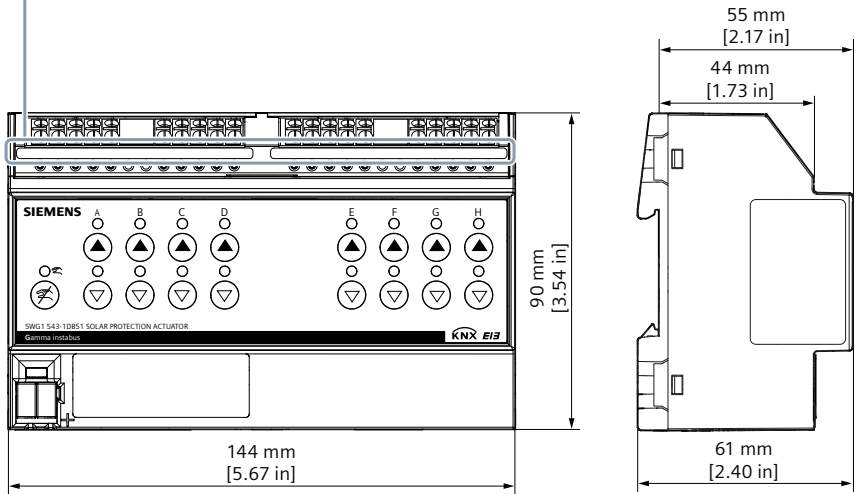
Test / Test / Test / Test / 测试



	1	2	3a	3b	4
A B C D E F G H ▲					
A B C D E F G H ▼					

Information / Information / Informations / Información / 信息

A 1▼ 2▲ 3L 4▼ 5▲ B | μ | C 6▼ 7▲ 8L 9▼ 10▲ D | E 11▼ 12▲ 13L 14▼ 15▲ F | μ | G 16▼ 17▲ 18L 19▼ 20▲ H



Technical Documentation:  
<http://www.siemens.com/gamma-td>



Technical Support  
<http://www.siemens.com/supportrequest>



FAQ:  
<https://support.industry.siemens.com/cs/ww/en/ps/faq>

