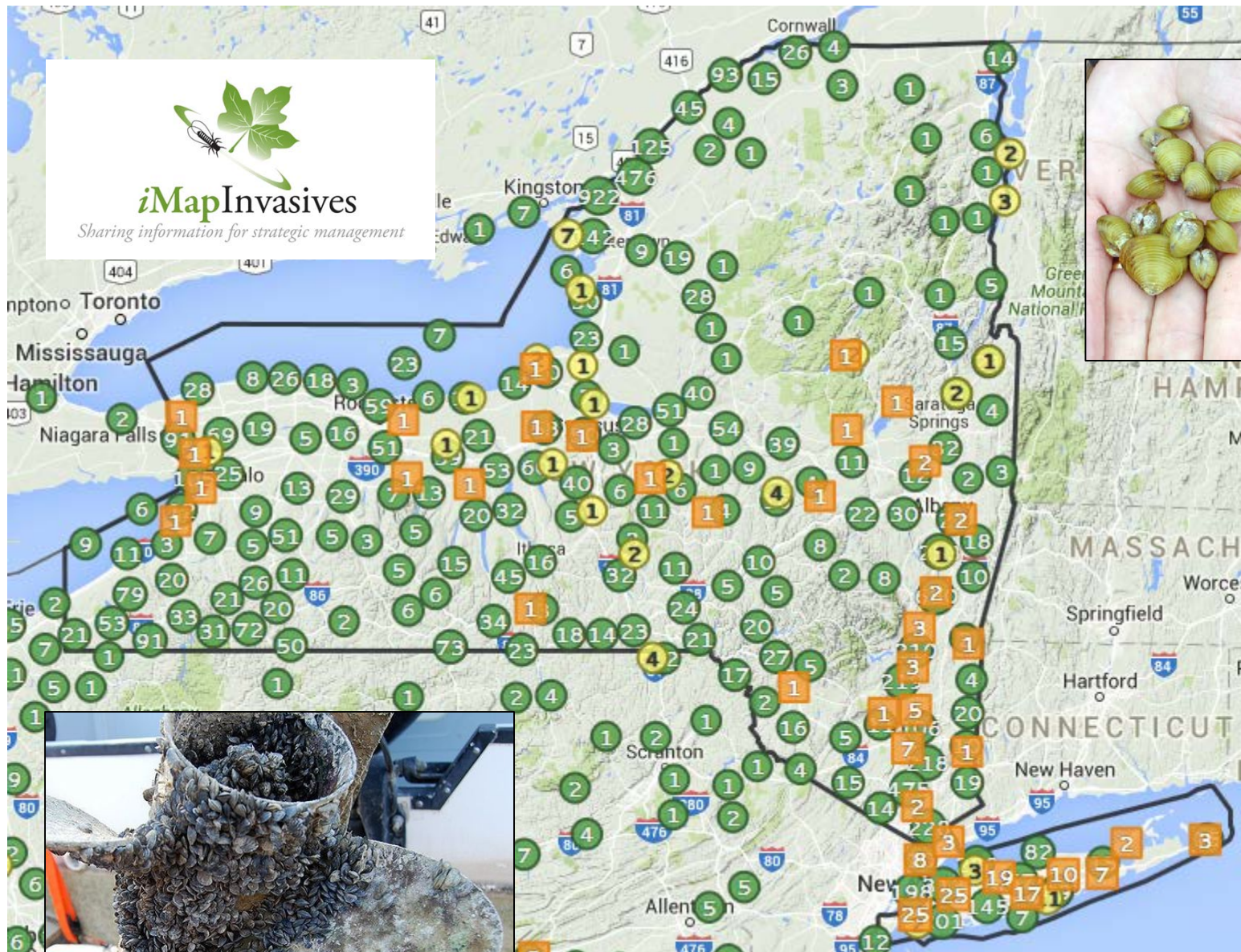


Emerging Aquatic Invasive Animals



New York
Natural Heritage
Program

Jennifer Dean
New York Natural Heritage Program
dean@nynhp.org



Aquatic animal observations in iMapInvasives



Asian Carps

The common usage of the term “Asian carps” in the US has come to include only the four carps most recently introduced:

- bighead carp (*Hypophthalmichthys nobilis*)
- silver carp (*H. molitrix*)
- black carp (*Mylopharyngodon piceus*)
- grass carp (*Ctenopharyngodon idella*)

Three additional carps native to Asia have been introduced into the US but are not commonly included in the collective term “Asian carps”:

- common carp (*Cyprinus carpio*)
- goldfish (*Carassius auratus*)
- crucian carp (*Carassius carassius*)

From www.asiancarp.org



Bighead Carp
Hypophthalmichthys nobilis



Silver Carp
Hypophthalmichthys molitrix



Black Carp
Mylopharyngodon piceus

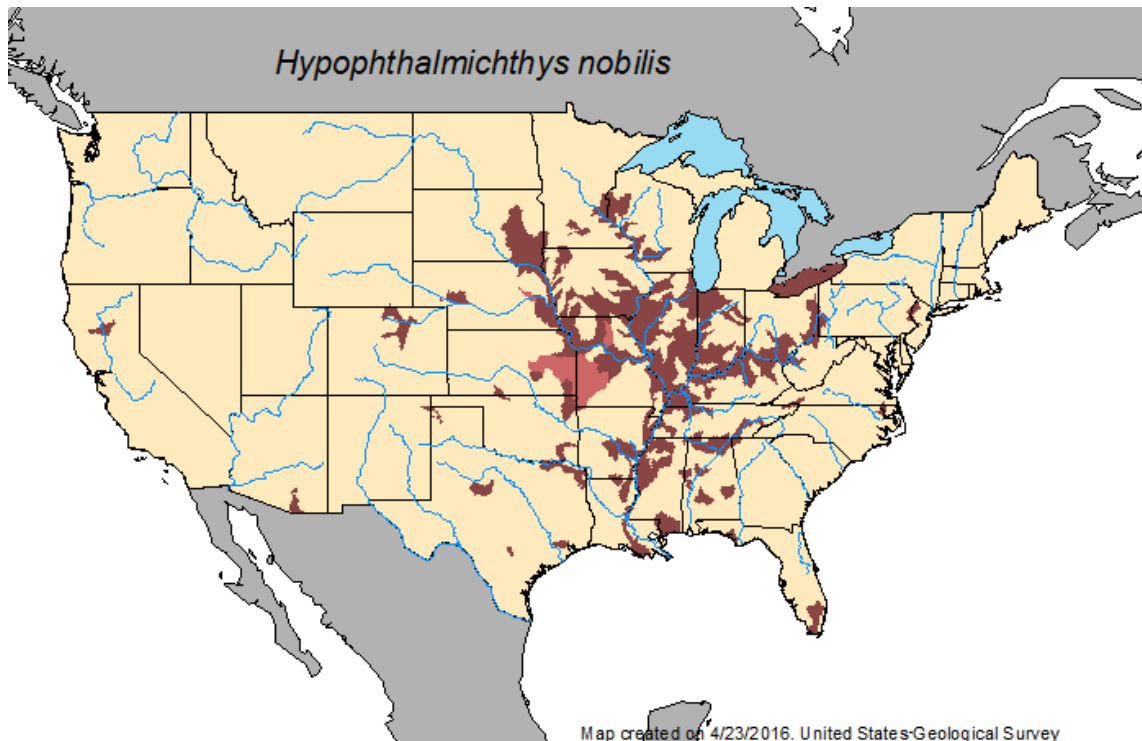


Grass Carp
Ctenopharyngodon idella

Bighead Carp



USGS NAS

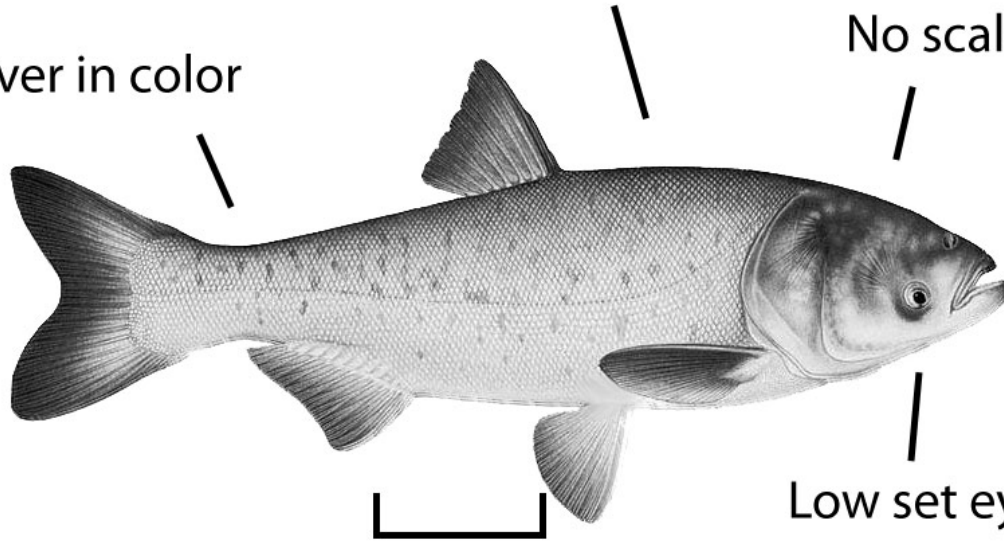


Bighead Carp

Dark blotches along the back (dorsal) region

Silver in color

No scales on head



No barbels on nose, unlike common carp

Downward slanting mouth (frown)

Low set eyes

Keel extends partway along belly

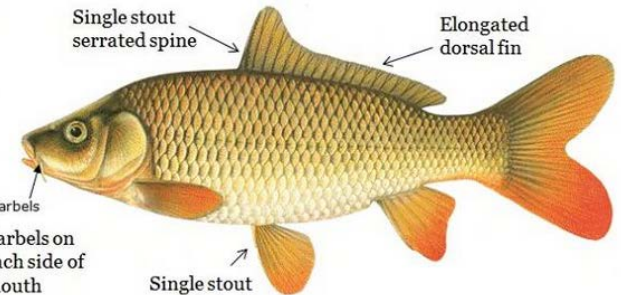
Common Carp

Single stout serrated spine

Elongated dorsal fin

barbels
Barbels on each side of mouth

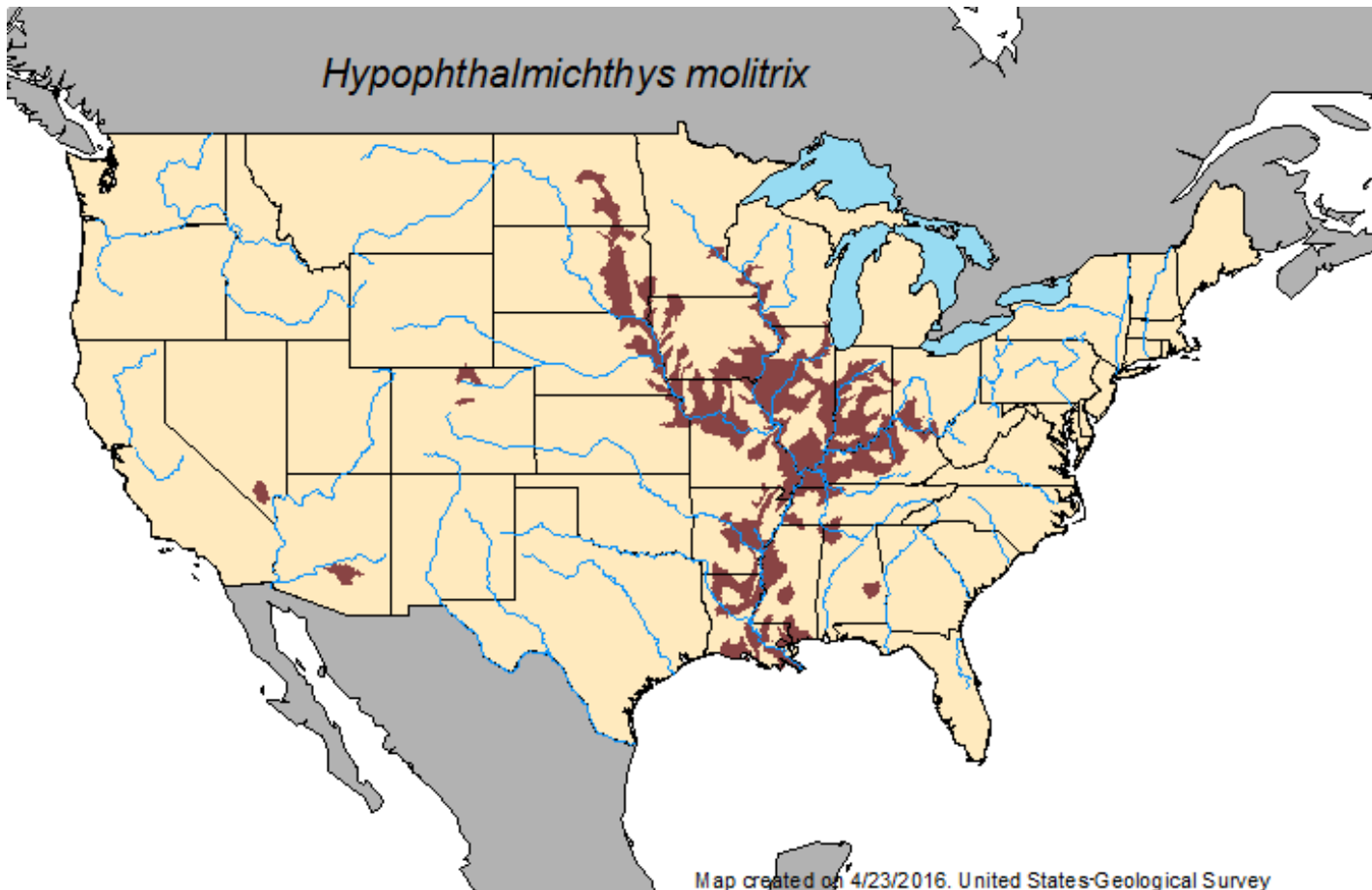
Single stout serrated spine



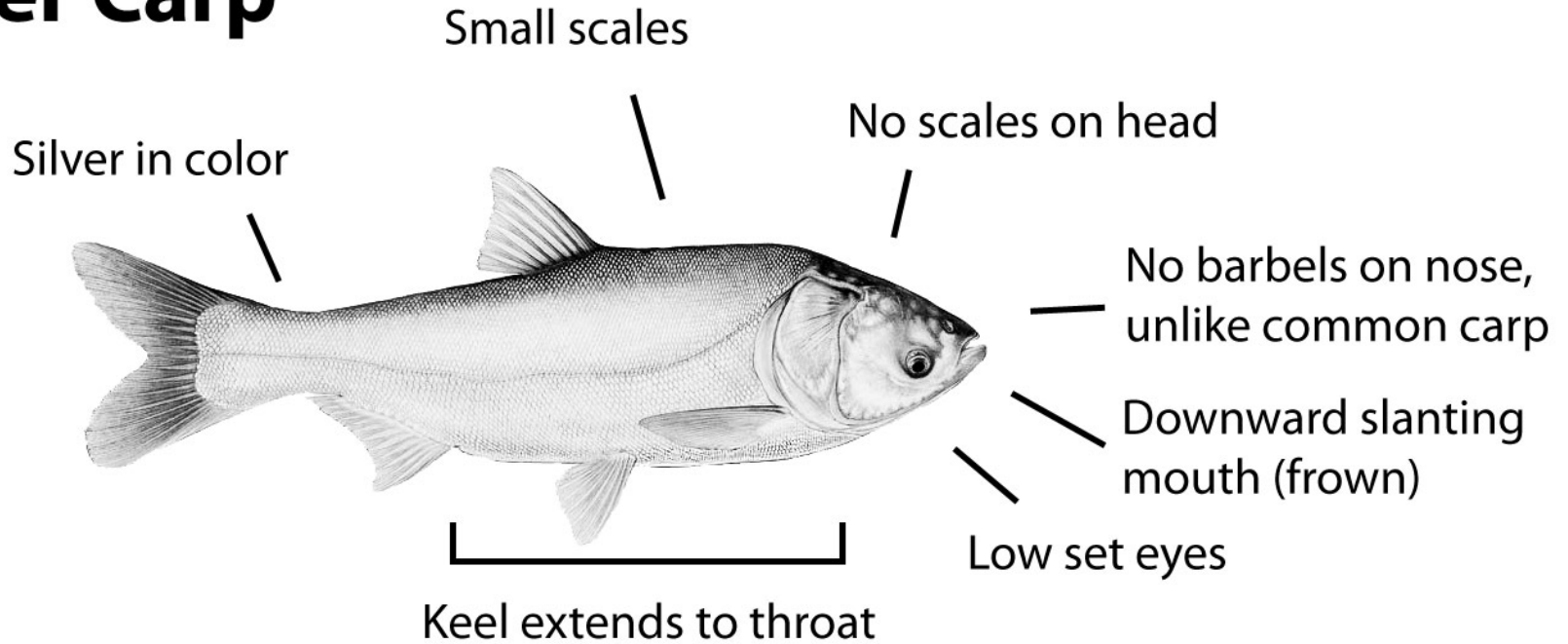
Silver Carp



USGS NAS



Silver Carp



Common Carp

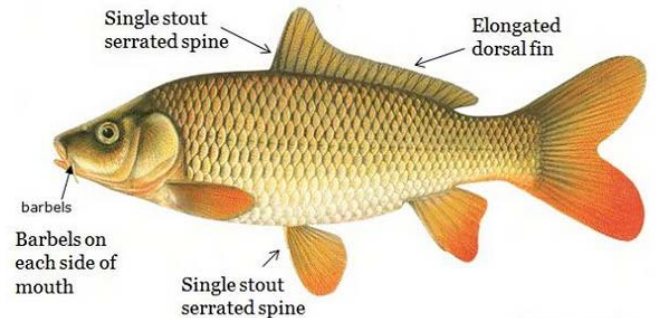


Illustration © Joseph Tomellen

Juvenile Silver Carp



Juvenile Bighead Carp



A noticeable keel (ridge on the underbelly) with no scales that extends from the gills to the anal fin

Eyes are positioned below the line extending from tail to snout

Juvenile Invasive Carp illustrations by Emily Damstra.

Silver Carp



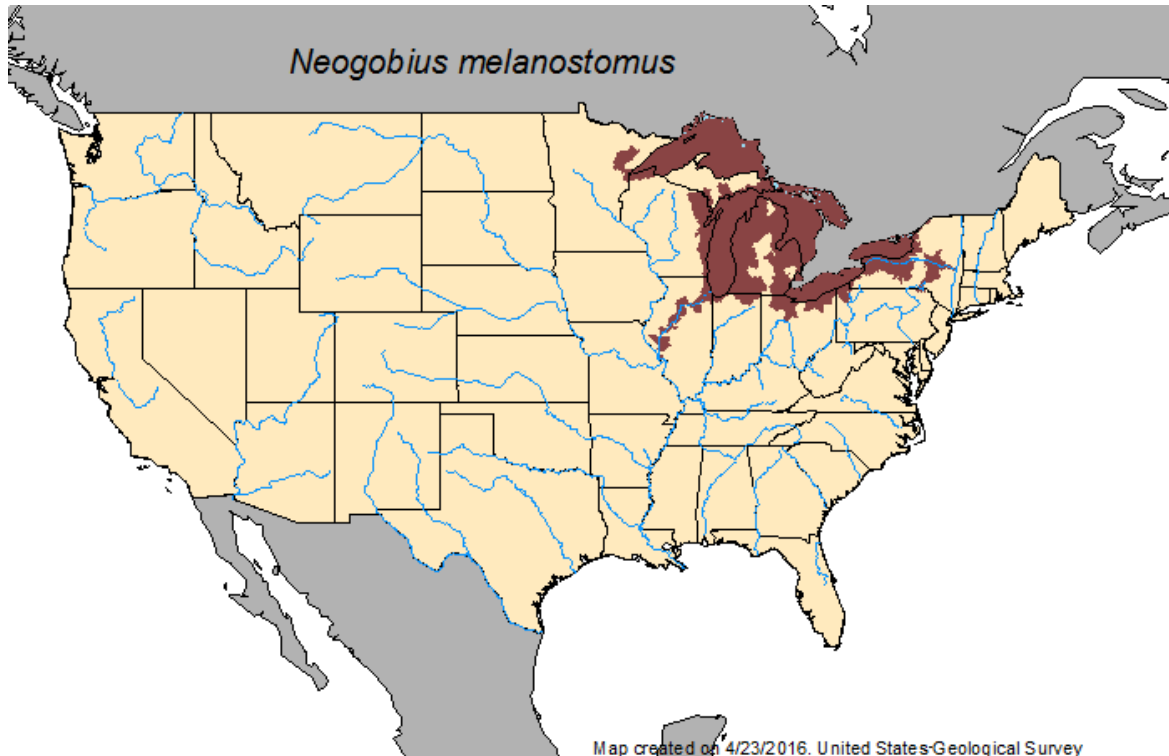
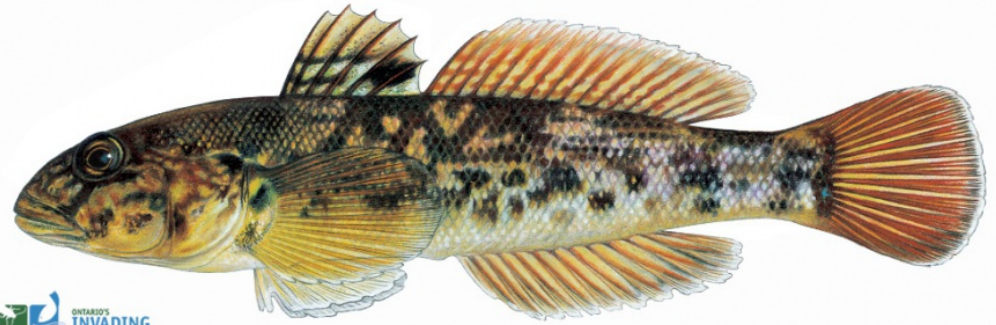
Gizzard Shad



Bighead Carp

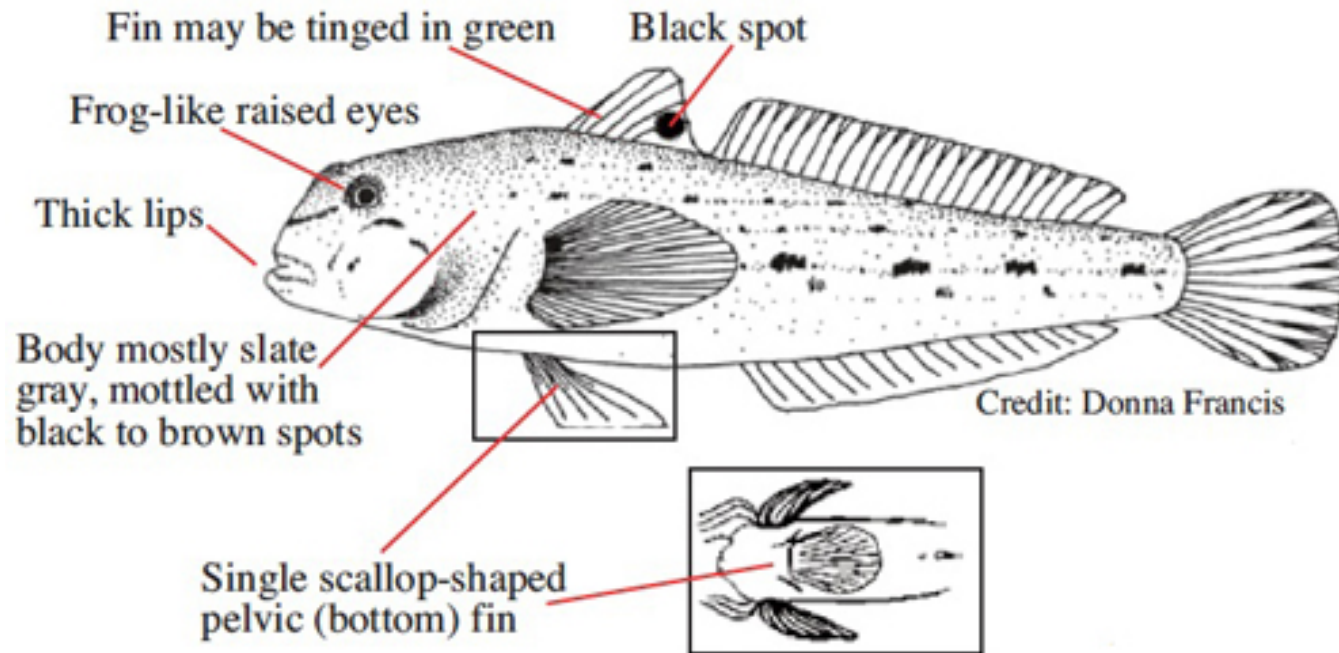


Round Goby



Round Goby

- No other native fish in the Great Lakes has the single pelvic fin
- Young are solid slate gray, older fish are blotched with black and brown
- Usually 3-6 inches (7-15 cm) long, may be up to 10 inches (25 cm)

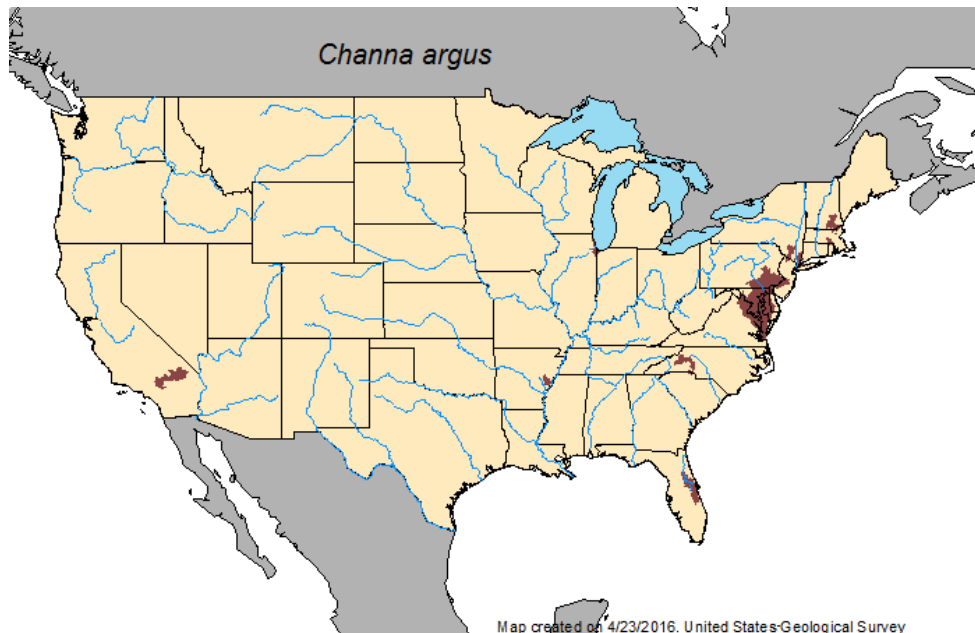


Northern Snakehead



Artist: Susan Trammel © 

USGS NAS



Aquatic Invasive Species **Northern Snakehead**

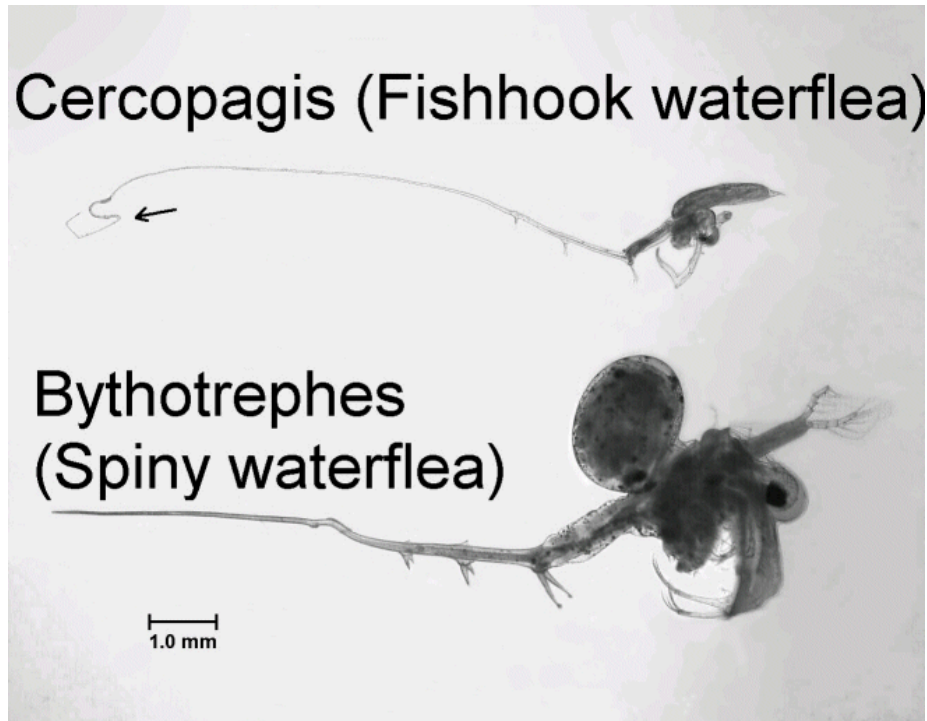


Native Species

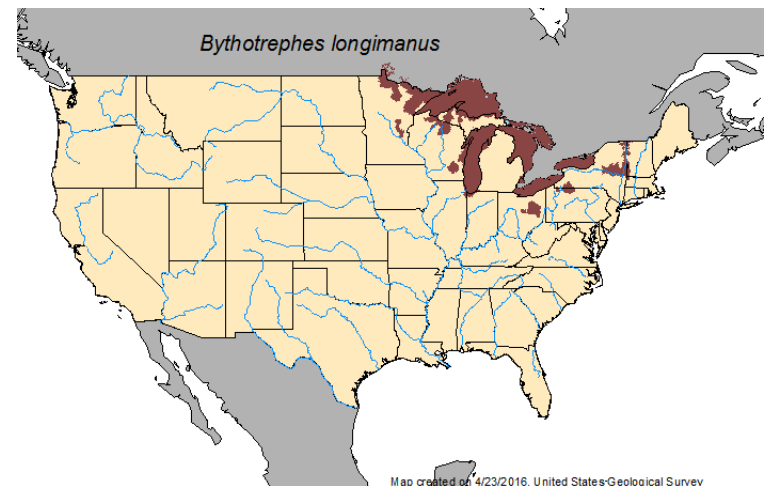
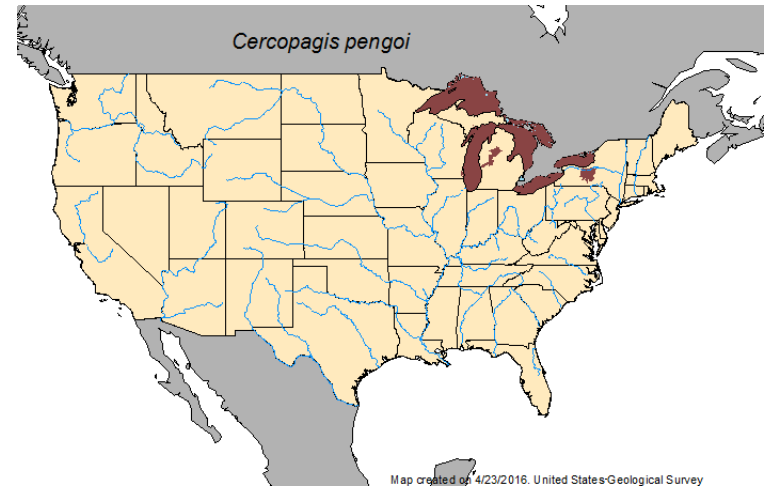
Bowfin



Spiny waterflea and Fishhook waterflea



USGS NAS

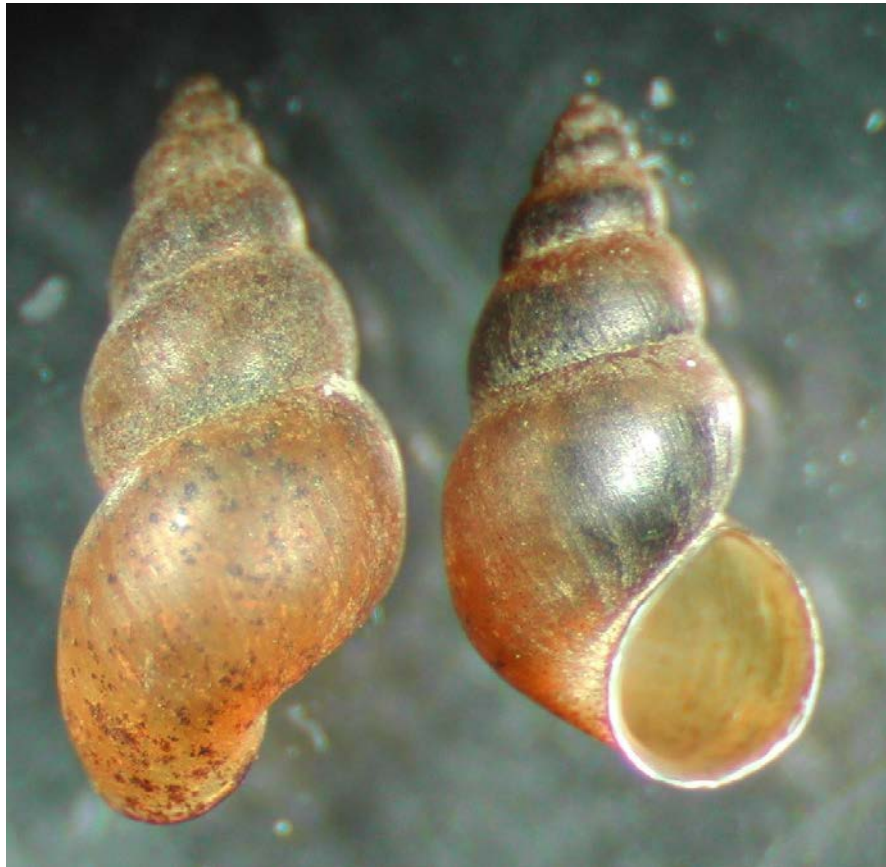


Spiny waterflea and Fishhook waterflea

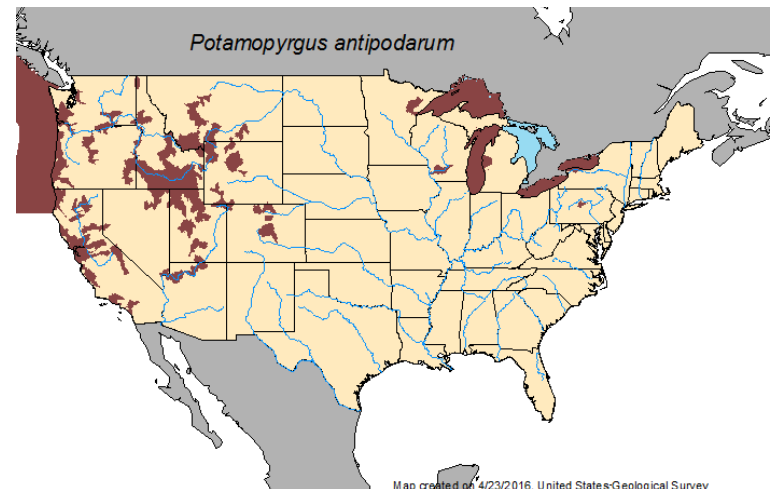
- 1/4 - 5/8 in (5-15mm) total length
- Clumps look and feel like gelatin or cotton batting with tiny black spots
- Prefer deep lakes, but can establish in shallow waterbodies and rivers
- Abundant during summer (June-September) depending upon water temperatures



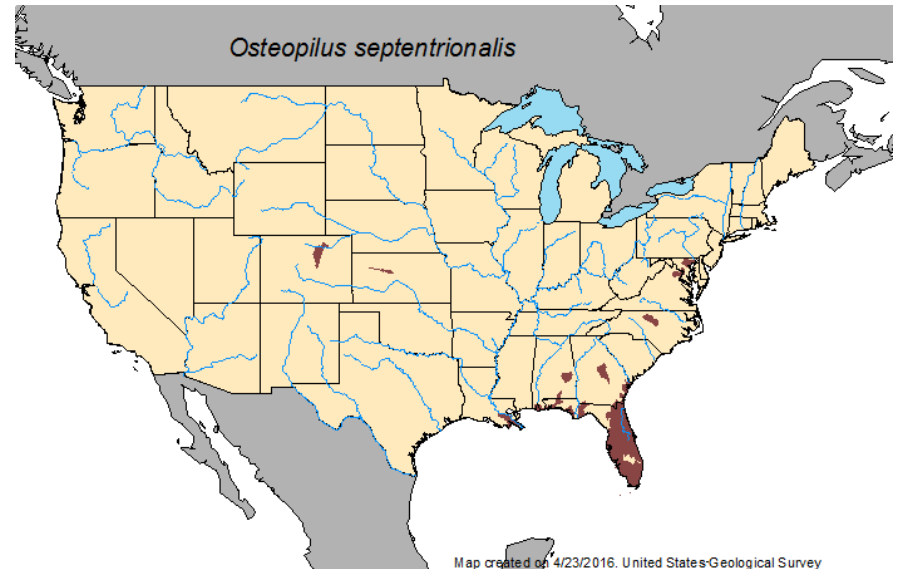
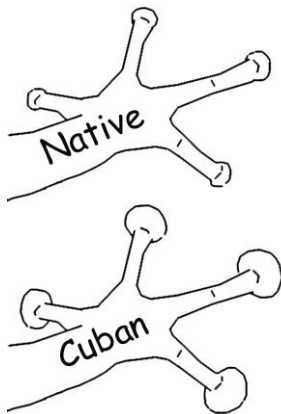
New Zealand mudsnail



USGS NAS

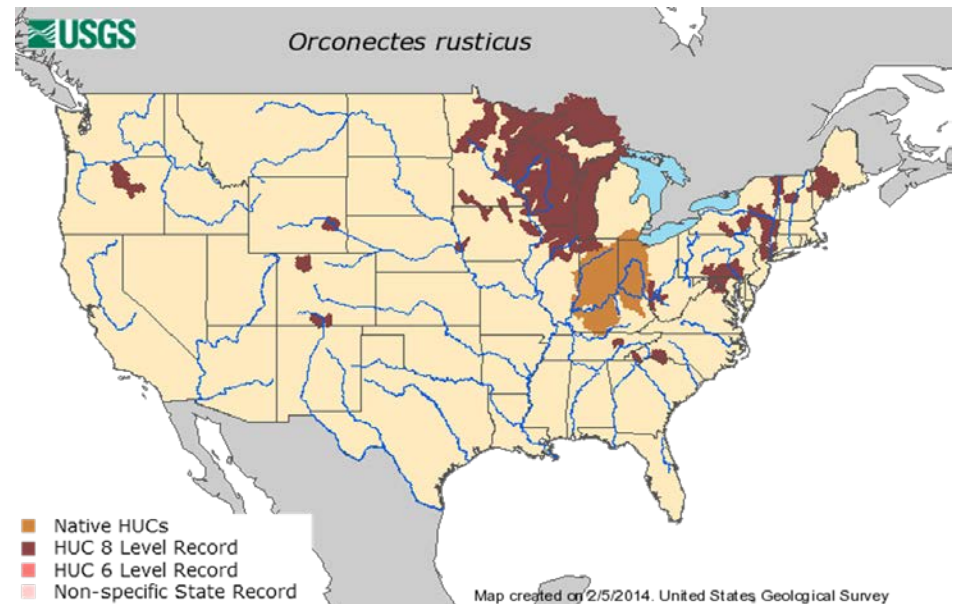
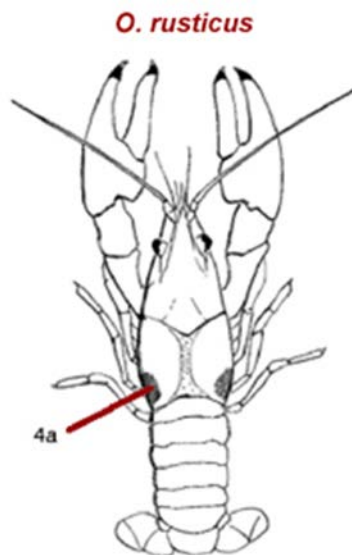


Cuban treefrog



Rusty crayfish

- Robust claws
- Dark, rusty spots on each side of carapace (variable)
- No light colored stripe along back of tail
- Black bands at claw tip





Updated Invasion Risk Assessment For Ponto-Caspian Fishes To The Great Lakes

Journal of Great Lakes Research 40 (2014) 360–369

Contents lists available at ScienceDirect

 **ELSEVIER**

Journal of Great Lakes Research

journal homepage: www.elsevier.com/locate/jglr

 **IAGLR**

Updated invasion risk assessment for Ponto-Caspian fishes to the Great Lakes

Randal J. Snyder ^{a,*}, Lyubov E. Burlakova ^{b,1}, Alexander Y. Karatayev ^{b,1}, David B. MacNeill ^{c,2}

^a Department of Biology, SUNY Buffalo State, 1300 Elmwood Avenue, Buffalo, NY 14222, USA
^b Great Lakes Center, SUNY Buffalo State, 1300 Elmwood Avenue, Buffalo, NY 14222, USA
^c New York Sea Grant Extension, SUNY Oswego, Oswego, NY 13126, USA

ARTICLE INFO

Article history:
Received 28 May 2013
Accepted 16 February 2014
Available online 13 April 2014
Communicated by Ed Rutherford

ABSTRACT

Majority of including species the round goby traffic strongly To assess inva English Janu



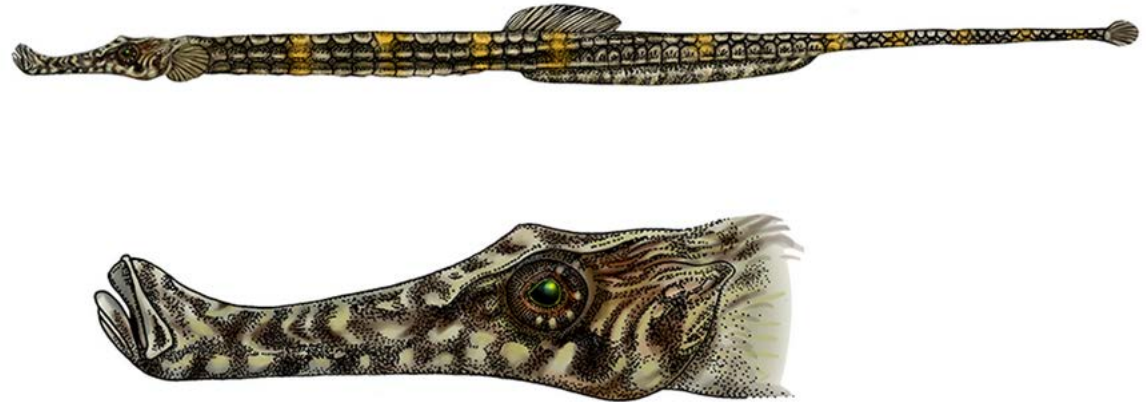


Figure 2. The black-striped pipefish is at high risk of successfully invading the Great Lakes via ballast water introduction and may cause significant ecological harm if introduced. (Credit: Randal Snyder)

Report observations and search maps at:

www.NYimainvasives.org



[iMapInvasives Spring Training Schedule & Registration](#)

Join us for the 7th annual spring training blitz in your PRISM!

Welcome to iMapInvasives, New York's Online Invasive Species Database and Mapping System!

Login Now



"On a global basis...the two great destroyers of biodiversity are, first, habitat destruction, and second, invasion by exotic species..."

E.O. Wilson (Strangers in Paradise, 1997)

Report these key species to iMap:



New York State
Prohibited and Regulated
Invasive Plants

September 10, 2014



[Check out the NYS Prohibited and Regulated Invasive Plants](#)

[List](#)