

MAY
2022



Temple Beth Israel

The Center of Jewish Living on Longboat Key

In This Issue

President's & Rabbi's Messages	P 2-3
Exec. Director/Co-President's/Admin Report	P 4-6
Education Center/Men's Club/BIW	P 7-9
Life & Legacy/Gift Shop/BBB/Leadership Circle	P 10-12
Membership Committee/SAC	P 13-14
Special Projects/TBI Cemetery/TBI Events	P 15-17
Donations/Birthdays/Anniversaries	P 18-25
Yahrzeit Donations	P 18-25
Advertisements	P 26-42
Calendar/Coupons	P 43
Editors' Notes	P 44

2021 Officers:

- Stuart Sinai**, President
- Murray Blueglass**, Immediate Past-President
- Allan Goldfarb**, Vice President
- Marion Levine**, Vice President
- Dr. Sandra Packard**, Vice President
- David Gorin**, Vice President
- Dr. Howard Tessler**, Vice President
- Bob Vigder**, Financial Secretary
- Dr. Lois Barson**, Recording Secretary
- Nancy Cohen & Sylvia Pastor**, BIW Co-Presidents
- Lew Moyer & Ralph Liebstein**, Men's Club Co-Presidents
- Richard Levine**, Endowment Chairperson
- Dr. Sandra Packard & Lynn Burton**, Co-Editors



**CONGREGATIONAL TRIP TO
ISRAEL**

“Yesterday, Today and Tomorrow...”

OCTOBER 19 – NOVEMBER 1, 2022
Optional Dubai extension – Oct. 31 – Nov. 4, 2022

Traveling together in Israel is an opportunity to connect – with the people and history of Israel, with the land itself, and with each other. As a community, we will bond through our shared experiences and enhance our understanding of history as we delve in-depth into Israel’s millennia-old religious and cultural legacy.

Learn more about this amazing trip at secure.ayelet.com/LongboatIsraelOct2022.aspx or see the flyer inside this issue!

Smart phone? Scan me! 



TBI Summer Service Times

Friday Shabbat Services | 7:30 p.m.

Saturday Morning Service & Torah Study | 10:00 a.m.

Friday Shabbat Services | will begin at 5:30 p.m.
starting June 10 through late August.



PRESIDENT'S MESSAGE

Temple Beth Israel has had an enduring presence on LBK for over 42 years. We have a strong tradition of beautiful worship, exquisite music and a special welcoming place where we come together into its warmth, comfort, and with a strong transcendent sense of belonging. Without TBI there is no place of communal Jewish presence here.

This Center of Jewish Living exists only because of you and the combined generosity of all of us. This is a pluralistic center with Jews of many differing levels of religiosity, but it draws everyone together to create a common experience.

It is our responsibility to assure the future of this place. We can do that by our gift giving and estate planning and by participating in our innumerable activities.

We have had over the years superb leadership and I was pleased to have been given the honor of being your President for the last two years. I had an extraordinary role model, **Murray Blueglass**, our immediate Past President. I had the advice and pleasure of working with our Executive Director, **Isaac Azerad**. I have been surrounded by our officers who make up our Executive Committee and the Board of Trustees and have had their wise counsel, the benefit of their varied experiences and knowledge, all of which have kept us focused on the important issues facing the Temple. Lastly, I have had the good counsel and friendship of **Rabbi Sniderman**, our learned and gracious religious leader.

I want to also recognize a group of retiring officers and directors who have been over the years invaluable sources of wisdom and advice. **Dr. Sandra Packard** who will no longer serve as Vice President but will continue as a board member and Co-Editor of the *Bulletin* along with Co-Editor, **Lynn Burton**. Also retiring from years of service as an officer or director, **Dr. Lois Barson**, **Lynn Burton**, **Walter Frank**, **Elise Galinsky**, **Lee Mirman**, **Stuart Tauber**, and lastly **Richard Levine** who served as Treasurer for 10 years, a board member and as chair of our Endowment Fund Committee. I hope I haven't missed anyone. I thank them all for giving us so much of their wise counsel, leadership, and time. They are all exemplars of the extraordinary talent we have at Temple Beth Israel.

Your membership and presence confirm our solidarity and strength here on LBK. I hope during these last two years I have given you reason to stay with us.

Again, thank you for allowing me this grand pleasure of serving you.

A handwritten signature in black ink that reads "Stuart Sinai". The signature is written in a cursive, flowing style.

Stuart Sinai, Temple Beth Israel President



FROM THE RABBI'S STUDY

A Kind of Immortality

As many of you know, **Rabbi Everett Gendler (z"l)** passed away last month. He was one of many retired rabbis who would come down to Sarasota every winter and worship at various congregations on Shabbat. We were honored every time he came to **Temple Beth Israel**. I have enjoyed visiting with retired colleagues, reconnecting with some, getting to know others. I would always welcome Rabbi Gendler as a major figure in the American Civil Rights movement. I have pointed him out in the famous photographs from the 1960s with Martin Luther King. I once told him I knew who he was when I was a kid. I will never forget the loving smile he gave me whenever he came into our sanctuary. Some years ago many of Rabbi Gendler's writings were published together in a special volume. I put my copy on the top of a pile of books on my desk. I view this as a kind of immortality.

This kind of immortality is not meant to be a substitute for more traditional understandings. The words of the deceased live on in many ways whether we are talking about a published volume or a handwritten letter from a loved one who is no longer with us. When I read the writings of those I knew, in my head I hear them speaking the words in their own voices and accents. This is an example of the kind of immortality that I am talking about.

Rabbi Gendler was a man of peace, and we are in a time of war. We pray the prayer for peace with deeper fervor. The words become all the more relevant. Many of our not so distant ancestors came from what is now Ukraine. The story of the Jews in Ukraine has been a painful and bloody chapter in our history. Ukraine was also a place of great Jewish religious and secular creativity.

We pray for a better, safer and more peaceful future. We work for that future inspired by the words of those who came before us who never gave up hope for a better humanity.

Rabbi Stephen L. Sniderman

TBI CARES

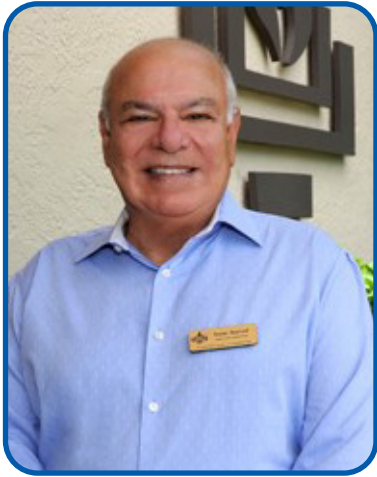
One of the strengths of **Temple Beth Israel** is the warmth and friendliness among the Rabbi, staff, leaders and all of the members. Everyone cares about everyone.

If you, a member of your family, or someone you know at TBI is celebrating a special event - a marriage, birth of a grandchild, a grandchild Bar or Bat Mitzvah, or other joyous event, we'd like to share your joy with the TBI family.

Similarly, if you, a family member here or out of town or someone you know at TBI is confronted with an illness, undergoing surgery, hospitalization or experiencing the loss of someone near and dear, Rabbi Sniderman and your TBI family want to support you and your family through difficult times.

In either situation, please feel comfortable in sharing your joys, worries, or sorrows with the Rabbi and your friends at TBI. To do so, feel comfortable in calling **Rabbi Sniderman** directly at **941-376-3170** or call the Temple office at **941-383-3428** so we can show how TBI cares.

Marion Levine, Vice President Special Projects



FROM THE EXECUTIVE DIRECTOR'S DESK

It has been a most unusual period in our Temple's history. We have survived a difficult time with the lingering pandemic that started two years ago and has had worldwide consequences. Allow me a word of gratitude to all. Thanks to your tenacity, moral and financial support, the unprecedented performance of your Rabbi, your President, your Board of Trustees, and your Staff, we have succeeded in turning a difficult corner.

Your Board of Trustees has worked tirelessly during a very ambiguous, and volatile year, with insight, initiative, and positive attitude. Your Staff has carried the load with a can-do attitude, sometime working from home with illness, with COVID, day or night, ignoring their own comfort. Your President, whose leadership proved invaluable in these troubled times has demonstrated resilience and skill. We cannot say enough to recognize his efforts. Stuart is stepping down from the presidency but not from the Board. We will continue to enjoy his contribution for another two years and beyond.

Your reply by mail ballot and in person voting, has been robust with an overwhelmingly positive mandate. You have adopted the budget we presented to you, by a substantial majority. We have proposed a deficit budget to reflect the decrease in many of our fundraising activities and with an abundance of caution. It is only through your generosity that we have obtained additional funds that prevented us from dipping into our reserves. We are increasing dues by a modest \$75 per single or \$150 per unit. Our new dues and Key Membership statements that we are mailing June 1st will reflect the adjustment. Our security fee will continue to be assessed, as in the past.

You have also adopted a slate of new officers and trustees. They represent the best and the brightest. They are motivated, hardworking and we are looking forward to the next years with hope and optimism.

We also mark a full fiscal year since the inclusion of The Education Center at Temple Beth Israel. We have managed to absorb the initial startup and moving costs, labor, and equipment installation. As of this week, we are in positive territory. We will probably end up flat or show a slight deficit by May 31st, 2022.

Like you, I am excited at the prospect of the rejuvenation and renewal of our Temple, your Board and committees are working on several opportunities that will enhance our Temple for the next decades.

On a personal note, I am proud to be part of this dynamic organization and forward-looking Temple. I am particularly grateful for your vote of confidence in allowing me to remain with TBI for an additional 4 years. I look forward to a renewal and rebirth of our Center of Jewish living on Longboat Key. With your help, I am convinced that we can succeed.

Isaac Azerad, Executive Director

A MESSAGE FROM THE NEW CO-PRESIDENTS

We are very honored and excited to take on the responsibilities of leading the wonderful **Temple Beth Israel** for the next two years, officially taking office on June 1. We look forward to a beautiful and warm future for TBI and all of our members.

We must express, on behalf of all the members of Temple Beth Israel, a great todah rabba – thank you – to outgoing **President Stuart Sinai**. Stuart has done an incredible job of leading TBI through an extraordinary two years. Covid essentially closed the Temple down and Stuart's leadership together with **Rabbi Sniderman**, Executive Director **Isaac Azerad**, the officers, Board of Trustees and many volunteers kept us connected and united through the very difficult and unusual times we all faced. The Friday evening happy hours, the Shabbat pick-up dinners, special on-line and zoom events, the connection of the LBK Education Center to TBI, the tremendous job of improving the security and healthy indoor environment, the addition of a second exit from the sanctuary, and continuous Shabbat and festival services are just a few of the accomplishments under Stuart's leadership. Congratulations, Stuart, and thank you for all of the time, energy, and accomplishments under your leadership. We have very big shoes to fill going forward.

Just a few interesting things about us...

Co-Presidents are certainly unusual but not unknown in Temple life. We sought out this leadership format because we have different talents and experiences and think that together we can accomplish more than either of us could do alone.

Marion Levine has been a TBI member since 1995. She has a wealth of knowledge of the history and past experiences of TBI. And Marion knows everyone everywhere in the SRQ Jewish community.

David Gorin and wife **Susan** became full-time "LBKers" in 2018 and have been TBI members for about four years. David has a background in Temple life from many early years of involvement in the Conservative movement and 30+ years as a member of the largest Reform congregation between New York and Atlanta, Temple Rodef Shalom in Falls Church, VA.

David always thought that Men's Clubs were for men and that Women's groups were for women. Marion and David can mix with both TBI's Men's Club and Beth Israel Women with equal ease.

Marion never stops moving; golf, bridge, theater, dining out and being a partner with Sam Samelson who is equally as busy as Marion. Sam is a member of Temple Emanu-El.

David moved off LBK in June 2021 and now lives in downtown Sarasota. Marion has a split personality with a home on LBK and pied-a-terre in downtown Sarasota with Sam.

We're both committed to TBI and pledge to do the best we can to continue to assure a strong Jewish community on LBK and the surrounding areas.

ADMINISTRATIVE REPORT

I thought it would be interesting for everyone to learn more about **Carl** and **Charity Kurtyka**. These two individuals work under **Susan Goldfarb**, our Director of the Education Center at **TBI**. Each one has a separate duty as independent contractors in helping to ensure that the 175 programs offered by the Education Center are always available to the students year after year. Charity, as the Assistant Director of the Education Center, was responsible for processing over 3,000 registrations this season, and in previous non-COVID years, there were over 5,500 registrations. Charity was involved in setting up all the Zoom licenses, scheduled Zoom programming, and related communications. She also assisted presenters in providing classroom materials, as well as assisting with the classroom setups and resets. She was involved with the pre-existing Access database, and the exciting Temple policy to integrate accounts receivables, preparing deposits, and tracking registrations along with the Education Center membership income details. Charity assists the Program Directors on various projects as assigned and assists with their performance events.

Carl is an Audio/Visual expert and he has installed low voltage (Internet/Wi-Fi) infrastructure for the Education Center. This was necessary to run all the devices needed to do business, as well as support Zoom hybrid (in-person & Zoom) programming. Carl was able to adapt and modify A/V systems in Studio One, our Choir Room, and in Social Hall A to accommodate presentations and movies, and for improving Pro-Audio for both the students and instructors for hybrid programming. Pro-Audio refers to both an activity and a category of high quality studio-grade equipment. One example that now stands out is the excellent sound quality that he has achieved for us in the Social Hall. Carl resourced available audio equipment to design/configure a Pro-Audio system to provide a more professional quality audio for our Choir and for the attendees at our recent fund raising concert in the Sanctuary. He was involved in setting up the sound system at our recent Gala at Michael's on East. Carl has already provided last minute, or as needed, professional equipment for our Temple events. He has provided the Temple with a reduced rate for his service at our Temple events, both at the Temple and off premises. Carl has assisted us with various Temple maintenance projects throughout last year and going into this year. Carl has assisted presenters in their preparation for their programs as well as the Choir. He has facilitated Zoom programming in addition to setting up and resetting classrooms. Currently, he is installing a new security camera system on the west side of our Temple. We are extremely fortunate in having both Carl and Charity working at our Temple. Each has professional talents that only help add to our talented staff, which we are so fortunate in having at Temple Beth Israel. Let me wish you all a happy, healthy and safe summer.

Allan Goldfarb, Vice President of Administration



JOIN TEMPLE BETH ISRAEL OF LONGBOAT KEY, FL

ISRAEL

YESTERDAY, TODAY AND TOMORROW

ישראל אתמול, היום ומחר

OCTOBER 19 - NOVEMBER 1, 2022
optional Dubai extension - Oct. 31 - Nov. 4, 2022

Traveling together in Israel is an opportunity to connect – with the people and history of Israel, with the land itself, and with each other. As a community, we will bond through our shared experiences and enhance our understanding of history as we delve in-depth into Israel's millennia-old religious and cultural legacy.

ON OUR JOURNEY WE WILL:

- Discover Jewish heritage and history in **Jerusalem, the Galilee, Tel Aviv** and beyond
- Meet with **Israeli leaders, scholars and citizens** for in-depth discussions on the state of affairs in Israel and better understand the partnerships and co-existence between **Jews and Arabs**
- Discover Jerusalem's **Old City quarters**, then head underground to the archaeological wonder of the **Western Wall tunnels**
- Visit **Kibbutz Malkia** for a deeper understanding of life in an **IDF unit** on the Israel-Lebanon border
- Savor the flavors of a **Druze community** with **home hospitality** and a **traditional meal**
- Tour the mystical city of **Safed**, center of Kabbalistic practice and one of the four holy cities in Israel
- Visit **Reichman University** and **meet students** participating in a unique scholarship program for Ethiopians with high leadership potential
- Travel to our sister city **Tel Mond** for a tour and dance performance

and so much more!!



PRICING CHART <small>(based on double occupancy)</small>	CHECK/CASH PRICE	CREDIT CARD PRICE
ISRAEL LAND TOUR	\$5,265	\$5,425
ADD FOR SINGLE OCCUPANCY	\$2,195	\$2,260
DUBAI EXTENSION	\$1,745	\$1,797
ADD FOR DUBAI SINGLE OCCUPANCY	\$850	\$875

Learn more about this amazing trip at
secure.ayelet.com/LongboatIsraelOct2022.aspx

Paper registration form also available - call 800-237-1517 or email ayelet@ayelet.com



Ayelet Tours, Ltd.

800.237.1517 | www.ayelet.com

AN UPDATE ON THE EDUCATION CENTER AT TBI

The newly created Education Center at **Temple Beth Israel** wrapped up its 2021-2022 season at the end of April. Although the ongoing Covid pandemic still reduced attendance for programs in person, we managed to have encouraging numbers by providing many of our lectures and courses simultaneously on Zoom as well as in person. These hybrids, as they are called, are not provided by many of our counterpart lifelong learning centers in the Sarasota/ Manatee area. They usually provide one or the other, Zoom or in person. It makes us somewhat unique. **Carl Kurtyka**, our technical director, is brilliant, and he managed to run as many as 6-10 hybrid programs a day.

The enthusiasm from students was very exciting! Devotees who had attended The Longboat Key Education Center in the Centre Shops for many years were grateful that the legacy of adult enrichment, providing education, arts, culture, and recreation would be continued at Temple Beth Israel. They love the facility and the expanded space. Even with the modestly attended programs, people walked away thankful and excited to tell their friends about what they attended.

After 35 successful years in operation offering 175 programs including concerts, film festivals, jazz nights, yoga, literature, poetry, art and music appreciation, Supreme Court, world politics, movie and book groups, qigong, mah jongg, bridge, Broadway bios, wellness, a Lecture Series on diverse subjects, and a variety of other topics, everyone was very appreciative that they could continue to keep their minds and bodies active and their spirits young at The Education Center at Beth Israel.

I have been told countless times by many Longboat Key snowbirds and full-time residents that The Longboat Key Education Center was why they live or vacation on Longboat Key. This year some students even e-mailed **Isaac Azerad** to thank him for bringing the Education Center to the Temple. Now, everything they enjoyed at the former Longboat Key Education Center will be available at The Education Center at Temple Beth Israel. This season we had 3,095 registrations. Pre-Covid we normally processed 5,500 registrations at The Longboat Key Education Center. Like all lifelong learning centers, performing arts organizations and houses of worship, attendance is not what it was pre-covid. So, we are grateful that we were able to register as many people as we did!

Some of the great turnouts included a performance by the popular West Coast Black Theatre Troupe called *"Ain't No Mountain High Enough"* which garnered a 200+ live audience! Our two New Orleans jazz nights with Kid Dutch and his fabulous musicians brought in over 120 attendees each evening. The Motown presentation with Robert Gagliio had 100 in the live audience and Supreme Court, a perennial favorite, had over 90 students in person and 80 on Zoom.

When we moved during this past summer we brought equipment, furniture, artwork and started to install the necessary infrastructure. The money spent for the relocation and start-up costs will not be in the budget again henceforth, so although we may not have made a profit in our first season, I have every reason to believe that in the future, if the pandemic abates, we will flourish. In addition, there have been more than a few students who joined the Temple because of The Education Center at TBI. **Phyllis Rubinovitz** became a Temple member and made a \$5,000 donation to the Education Center. She has been a long-time patron of The Longboat Key Education Center and wanted to show her support of our new center. I feel confident that there will continue to be more people that become Temple members because of the increased activity level provided by the Education Center.

Now I will turn my attention to creating our 2022-2023 season. It takes three to four months to schedule the programs, consult with the speakers, teachers, and performers and put the 60-page brochure together. I look forward to having **Lynn Burton**, TBI *Bulletin* co-editor, assist me with the proofreading. She is tremendously helpful and catches all kinds of things with her eagle eyes! All Temple members will receive their brochure in August as will Education Center members. Non-members will receive theirs in September. This gives members a head start for program registrations. The Fall Term typically begins in late October or early November.

If you have any questions, please don't hesitate to call **941-383-8222** or email educationcenter@tbi-lbk.org. The school will be closed Thursdays and Fridays in May. Starting in June, The Education Center will have flexible office hours and we will not be in the office much. It is always good to call or email us if you are planning to drop by and see us at the Temple during the summer months.

If you know anyone who would like to make a proposal to give a course, lecture, workshop, or performance please have the person contact me at **941-920-2967** or email susanedcenter@tbi-lbk.org.

Have a happy and healthy summer!

Susan Goldfarb, Program Director of the Education Center at Temple Beth Israel

MEN'S CLUB

I want to thank everyone for their participation over the past year and under unusual circumstances. Despite the pandemic we have had a good year.

It was wonderful seeing so many people at our picnic. It almost seemed like old times. The weather was great and all were in a festive mood.

This summer's activities will consist of two lunches and two dinners. The first lunch will be at the **Lazy Lobster** on **Wednesday, May 11 at noon**. We will order from the menu and there will be separate checks issued. On **June 8 at 11:30 a.m.**, we will have lunch at **Dry Dock Waterfront Grill**. It is a great place to go now that the snowbirds have gone home.

Our July function will be at **Crab & Fin** on **Wednesday July 13 at 6:00 p.m.** We will have a private room as we did last time.

Our August and last function for the summer will be a dinner at **Rosemary and Thyme** on **August 10 at 6:00 p.m.** Many of us have been to this restaurant and it has always been a gastronomic delight.

All the restaurants will have us ordering from the menu and giving us separate checks. Last year we had a great time. I am looking forward to seeing many of you this summer.

For reservations for any of the Men's Club events, please call the **TBI** office at **941-383-3428**. COVID security requirements established by the TBI Board will be in effect for everyone's safety.

If you haven't already joined, please send your \$50 check to the Temple office, payable to TBI Men's Club.

We look forward to seeing you all at our events. As always, men and women are welcome at all Men's Club events.

Lewis Moyer and Ralph Liebstein, Co-Presidents, TBI Men's Club

BETH ISRAEL WOMEN'S CLUB REPORT

It's that time when we reflect on our accomplishments. Despite the challenges of 2021, we had a productive and enjoyable year. Our Fashion Show was a success, with BIW women modeling clothes and a delicious lunch at Michaels On East.

We are sending three girls to summer camp at Girls, Inc. We sent a check to The Jewish Federation of Sarasota-Manatee for Ukrainian relief.

There are plans to have programs during the summer. Our closing luncheon at Harry's on April 25th culminated a productive season.

Have a pleasant summer and stay healthy. I'll send some Autumn leaves.

Nancy Cohen and Sylvia Pastor, BIW Co-Presidents

SARASOTA JEWISH SINGLES

The Sarasota Jewish Singles is meeting for lunch on **May 17, at 2:00 p.m.**, at the Capital Grill, 180 University Town Center Drive, Sarasota, FL 34243.

The Sarasota Jewish Singles is an outreach program of Longboat Key to give all Jewish Singles in the Sarasota-Manatee area the opportunity to meet other men and women who are single.

The group meets once a month, for laughter and a time to turn acquaintances into lifelong friends. We would love to have you join us. Please notice the time difference for this month as we are meeting for lunch instead of dinner due to the requests that I have received from a number of our members who are unable to drive in the evening. I'm looking forward to a very enjoyable afternoon together.

To make a reservation or for more information, call or text **Rosalyn Fleischer** at **941-915-6631** or email rozfleischer@gmail.com.

Rosalyn Fleischer

GIFT SHOP

The Gift Shop will be open by appointment during the summer months. To make an appointment, please contact the Temple office.

Maxine Tauber and Tena Tessler, Co-Chairpersons

BOOKS & BROWN BAGS

Books & Brown Bags has had their final meeting of the year. A big thank you to all of our facilitators for this past year.

Books for 2022-2023

November: *My Father's Paradise* by Ariel Sabar

December: *This Magnificent Dappled Sea* by David Biro

January: *Conspiracy U: A Case Study* by Scott A. Shay

February: *Our Country Friends* by Gary Shteyngart

March: *The Best Place on Earth* by Ayelet Tsabari

April: *Spinning Silver* by Naomi Novik



"Providing Jewish communities with proven tools and training to help them secure their long-term financial goals is absolutely vital. Through the LIFE & LEGACY® program, I'm hopeful that we will be able to help sustain vibrant communities that allow future generations to enjoy our rich Jewish culture and heritage."

- Harold Grinspoon

The Following Legacy Donors have ensured that future generations will enjoy Temple Beth Israel and a Jewish presence on Longboat Key:

- Isaac Azerad
- Alice Blueglass
- H. Murray Blueglass
- Barbara Blumfield
- David (z"l) & Maggie Brenner
- Nancy & Rabbi Michael B. Eisenstat
- Gloria Feibus
- Joel Feidelman
- Mildred Field (z"l)
- Frank & Christa Fineshriber
- Walter & Marlena (z"l) Frank
- Elise & James Galinsky

In memory of Dr. Cecelia & Ben Liebow and Helen & Louis Galinsky.

- **Dr. Philip & Suzan Gaynes**
In memory of Seth Gaynes and Solomon Gaynes.

- Shelley & Sy Goldblatt
- Miriam & Allan Goldfarb
- Elana & Earl (z"l) Gordon
- Susan & David Gorin

In memory of our parents.

- Bernice Gourse (z"l)
- Robin Green

In memory of my husband Kermit 'Kit' Green who loved life and was a caring man. He is very missed by his family and many friends.

- Jay Greenblatt
- Norman (z"l) & Barbara Gross
- Dr. Jon & Joyce Gudeman
- Debby & Gerald Hamburg
- Dr. Audrey Heimler

In memory of my beloved son, Richard Adam Heimler

- Sue Jacobson
- Maggie Kaplen
- Sy Klionsky
- Benjamin & Sandra Krause

- Richard & Nessa Levine
- Marion & Dr. Bernard (z"l) Levine

In memory of Dr. Bernard Levine

- Bonney & Len Libman

In honor of our delightful dozen.

- Suzanne Lutkoff

In memory of David M. Lutkoff. He loved TBI in many ways including serving as president of the Men's Club.

- Donald & Judith (z"l) Markstein
- Judge Marvin & Betty Morse
- Lewis Moyer

- Sharon Oper (z"l)

- Dr. Sandra Packard

In Honor of Dr. Martin T. Packard's (z"l) love & Commitment to the study of Judaism and the support of Israel.

- Irwin & Judith Parmet
- Barbara Pressman & Robert Berns (z"l)
- Helen Rauch (z"l)
- Peter & Amy Roth
- Gloria Sabin
- Marjorie Sandy
- William Sandy
- Suzanne Berk Schuster

In honor of Terry Berk, my much-loved brother.

- Carole Shaw & Stuart Sinai
- Dr. Ira J. Singer & Carole R. Singer
- Sidney & Theresa Sinick (z"l)
- Rabbi Stephen & Corinne Sniderman
- Marilyn Taub
- Marjorie L. Tick (z"l)
- Robert & Judy (z"l) Vigder

In Honor and Loving Memory of Florence Katz

- Mel Weisel & Fran Mann (z"l)
- Roberta Wladis

OVER 1 BILLION DOLLARS pledged nationwide in support of our Jewish Communities across the United States and Canada!



Honor a Loved One!

LIFE & LEGACY Honor Society:

The Temple is happy to announce the establishment of a new program to enable members of the congregation to provide a perpetual tribute in honor of a loved one, or another person of their choice. The honor will be in the form of a **LIFE & LEGACY** gift made in the honor of the person designated.

Temple Beth Israel is proud to participate in this national effort to ensure our Jewish heritage continues for future generations!



For more information about LIFE & LEGACY program please contact:

Isaac Azerad, Executive Director

Office: (941) 383-3428

Email: iazerad@tbi-lbk.org or:

Bob Vigder, Chairperson

Phone: (614) 204-9944

Email: jandbv@aol.com

LEADERSHIP CIRCLE

Dear Friends,

With every passing month we glance with admiration at the growing roster of leaders who have joined our circle. We feel a sense of gratitude to you who made the extra financial commitment to the sustainability of our Temple by pledging funds that go beyond the customary dues.

As in the past, Leadership Circle members express their generosity with the understanding that dues alone do not cover the growing financial demands of our Center of Jewish Living on Longboat Key. Today, more than ever, we feel a sense of urgency to take the extra step to honor our heritage. The residual effect of the pandemic has diminished the attendance to many of the programs that raise funds for our sustainability. Many of you have already elected to step up to the next level of leadership. For that we thank you. You have set a great example for the rest of us.

By your example you serve as an ambassador, and an encouragement to those who have not yet joined your ranks among the honored Leadership Circle members. If you know of someone who may need a little prodding, won't you take a moment to encourage them and appeal to their spirit of Tzedakah? We could all benefit from their generosity, as we do from yours.

We thank you and honor your participation in the Leadership Circle.

*The following are the names received by the deadline for printing this issue. **Specifies Key membership.*

Eliot & Phyllis Arnovitz, Norton & Patricia Baron, Edwin & Barbara Biron, Marvin & Annette (z"l) Black, Alice & Murray Blueglass, Neil & Judy Blume, Barbara Blumfield, Ross & Wendy Born, Sue & Michael Boorstein, John Bradbury, Debbie Cohen, Judge Edward Cohen, Rabbi Michael & Nancy Eisenstat, Joel Feidelman, Shirley Fein, Walter Frank & Gale Hacker, Herman & Sharon Frankel, Nancy & David Freund, Suzan & Barry Friedman, Elise & James Galinsky, Suzan & Dr. Philip Gaynes, Patricia & Dr. Philip Gelber, Ann Glickman, Shelley (z"l) & Seymour Goldblatt, Miriam & Allan Goldfarb, Jan & Melvin Goldsmith, Susan & David Gorin, Robin Green & Jay Greenblatt, Barbara Gross, Joyce & Dr. Jon Gudeman, Debby & Gerry Hamburg, Joel Hamovit, Dr. Audrey Heimler, Stephen Helpern, Sue Jacobson, Doris Kaplan (z"l), Maggie Kaplen & Leon Sokol, Sy Klionsky, Sandy & Ben Krause, Ruth Kreindler, Nessa & Richard Levine, Marion Levine, Bonney & Len Libman, Risé Loshak, Lois Lowsky, Suzanne Lutkoff, Donald Markstein, Judge Marvin & Betty Morse, Marilyn Naiditch, Richard Olin, Lew Moyer & Dr. Sandy Packard, Sylvia & Irwin Pastor, Barbara Pressman, Margot & Jack Robinson, Harold Ronson & Molly Schechter, Marjorie & Bill Sandy, Sharon Schreiber, Estelle & Dr. Burton Silbert, Carole & Dr. Ira Singer, Carole Shaw & Stuart Sinai, Claire Smith, Donna & Ed Sobel, Mac & Bob Spitzer, Barbara Struth, Marilyn Taub, Tena & Dr. Howard Tessler, Kelli & Howard Veit, Bob Vigder**

Stuart Sinai and Isaac Azerad, TBI Leadership Circle Team

SOCIAL ACTION COMMITTEE

This is the last issue for a while and we want to -once again- give a shout out to all the SAC members who have worked diligently in many ways to help others in our community: **Arlene Skversky, Lois Barson, Gayle Barzman, Carole Cohen, Deb Cohen, Lois Lowsky, Deborah Nyman, Barbara Pressman, Carole Shaw, Maxine Spitzer, Maxine Tauber, Judy Tobias, and Bonnie Wilder.**

Future donation dates for groceries to SCLO will be publicized with an email notice from the **TBI** office. It is important to know that this organization is not only about food contributions and eating healthy meals. SCLO (Second Chance, Last Opportunity) offers individuals in the community many opportunities to improve themselves, get high quality jobs and become strong and valuable contributors to society. Their vision is to serve as a gateway to hope for people who want to live better lives.

The SAC members will plan to visit SCLO in the fall and see first hand how they implement their motto of “Reach one, teach one”. We each can contribute to this organization by going to Flanzer Philanthropic Foundation, online. They will match your donation.

For our next season, the Social Action Committee is interested in thoughts from you, our Congregation, as to topics or issues or humanitarian projects to address, beyond food donations. Please let us know your thoughts by calling **Karen** or **Alice** or any of the SAC members named above.

The members of the SAC will be meeting-in person-in the fall when we will discuss plans moving forward and new ideas. If you are interested in joining this vibrant group of “movers and shakers”, please call Karen or Alice. We are interested in you!

The Trolley Tour, “Newtown Alive Trolley” was a sold-out, successful, valuable venture and we will plan to schedule another in the fall for those who were not able to attend in April.

We wish you all a safe and healthy and happy summer.

Alice Blueglass and Karen Gary, Social Action Committee Co-Chairpersons

MEMBERSHIP REPORT

WELCOME ALL!

Here's a little more information about **David** and **Peri Namerow** who joined our congregation in January as full-time members.

A proud native of the Bronx, David attended CCNY, the University of Louisville School of Medicine, and did Pediatric training at Cincinnati Children's Hospital as well as the University of Maryland. He was founding partner of PediatriCare Associates in Northern N.J., from which he retired in 2017. David enjoys music, plays guitar and is currently President of the Schroon Lake Arts Council in the Adirondacks, which sponsors a well-known summer concert series. He is also a volunteer docent at the Storm King Art Center.

Peri grew up on Long Island, NY, and attended the University of Pennsylvania and Columbia University, where she received a doctorate in Sociomedical Sciences. She was on the faculty of the School of Public Health at Columbia University for more than 30 years, where she taught and did research about women's reproductive behavior. Along with their residence on Longboat Key, Peri and David have homes in Mahwah, NJ and Schroon Lake, NY. Together they enjoy their children and grandchildren, and love travel, biking, cooking, music, theatre, and art. Peri also loves playing bridge and knitting.

In March **Phyllis Rubinovitz** joined us at **TBI** as a full-time member. Phyllis lives on Longboat Key. She's originally from Lexington, MA. Her husband **Sam(z"l)** passed away in July. Phyllis is a big fan of the Education Center and is pleased that it's now located at TBI and close to her condominium. She has attended our Seder in the past and has found services very beautiful.

And, also in March, **Jana Singer** and **Larry Sidman** became Associate members of TBI. She is originally from New Jersey. Her husband, Larry Sidman, grew up in Boston and they currently live in Bethesda, Maryland. Jana is a retired law professor with a commitment to social action. Larry is a semi-retired attorney, active in Israel advocacy. They enjoy golf, bridge and travel. This winter they plan to take a "bucket list" trip to Australia and New Zealand if the pandemic permits. They attended the Seder this past month at TBI and have participated in Friday evening services in April. They hope to return to Longboat Key next winter. Welcome Jana and Larry. We look forward to spending more time with you next season!



Peri & David Namerow



Jana Singer & Larry Sidman

SPECIAL PROJECTS

Passover Seder: Over 90 TBI members, families and friends attended our Seder on Saturday, April 16, 2022. A delicious full course Seder was prepared by Michael's On East. Tulips added flair and color to the decor. **Rabbi Sniderman** lead a fun filled service with our own popular Haggadahs.

Shabbat Dinners: May 13, at 5:30 p.m. we will have our next Shabbat Dinner for this season. These have been very well attended events. If we assess that there are many year round members here over the summer months we may add dinners in June and September.

Last summer we had a good response to our **Shabbat Pick Up Dinners**. We will have one April 29 and then will plan one each week during the months of June, July and August. Watch for the menus each month. As long as there are more than 20 dinners ordered we will continue this service to our community. Member pricing is \$20.00 and non-members \$25.00

We are forming a new and enlarged Special Projects Committee. Please call the Temple and let us know if you are able to volunteer. We need help to implement this member service.

Many thanks to all those that have volunteered to help with Oneg Shabbats, distribution of Shabbat Pick Up Dinners, Seder and assisting with the running of all our in house events.

Marion Levine, Vice President Special Projects

SANCTUARY SEAT PLAQUES ORDER FORM

I would like to purchase _____ number of plaques for TBI Sanctuary seats at \$500 per seat plaque. The name(s) to place onto the plaque(s) are:

Please contact me at _____ to arrange my seat selection.

Your name _____

Thank you for your participation in this program.

Only one name goes on each plaque but you may purchase as many seat plaques as you wish.

You may pay for the seat plaque(s) in the TBI office. If paying by check please note "for seat plaque(s)" on check. All proceeds go to the TBI Facilities Fund.

Sandy Packard

TBI SPOTLIGHT: The Annual Men's Club BBQ at Bay Isles Beach Club

Photos By: Neil Blume





**APRIL
&
MAY 2022**

Extraordinary series featuring 21 exceptional authors, IN PERSON and via Zoom!

WAYNE FEDERMAN
The History of Stand-Up

APRIL 6
Jewish Congregation of Venice & Via Zoom

LISA SCOTTLINE
Eternal

APRIL 20
Via Zoom

DR. WAYNE ROIZEN
The Great Age Reboot

MAY 3
Temple Emanu-El & Via Zoom

MEDIA SPONSORS

Observer
You. Your Neighbors. Your Neighborhood.
YourObserver.com

Sarasota Magazine

For tickets and information, visit [JFEDSRQ.org/books](https://www.jfedsrq.org/books)



The Jewish Federation
OF SARASOTA-MANATEE

MAY BIRTHDAYS

MAY 1

Robert Nusbaum
Edward Sobel

MAY 2

Patricia Baron

MAY 3

Stuart Sinai
Jay Moskow

MAY 4

Judy Tobias

MAY 7

Dr. Michael Cohen
Merle Greenwald

MAY 10

Judy Krasnow
Susan Gorin

MAY 11

Sharon Frankel
Anne Lieberman

MAY 12

Edwin Biron
Howard Cohen

MAY 13

Norma Greenwald
Robert Israeloff
Cyvia Snyder
Dr. Allen Lichter
Barbara Rosenthal

MAY 14

Dr. Julius Deren
Lynn Burton
Margot Robinson

MAY 17

Debbie Weiner
Louise Solomon
Warren Coville

MAY 18

Pamela Reiter

MAY 20

Rosolyn Brott
Ronald Krum
Budee Jacobs

MAY 23

Bib Grossman

MAY 24

Jane Rodbell

MAY 25

Jana Singer

MAY 27

Jeffrey Schwartz

MAY 29

Esther Rose

MAY 30

Marvin Black

MAY 31

Barbara Struth
Rochelle Bernard

JUNE BIRTHDAYS

JUNE 1

Amy Roth
Maury Azerad

JUNE 3

Carole Shaw
Charles Ackerman

JUNE 4

Robert Gary

JUNE 5

Bonnie Wilder
Rabbi Jonathan Katz

JUNE 6

Phyllis Ploener
Alice Blueglass
Gail Barzman

JUNE 9

Jayne Meth
Dr. Robert Rosenbluth

JUNE 12

Alan Shaffer

JUNE 13

Denise Shoham

JUNE 14

Dr. Philip Gelber

JUNE 15

Barry Friedman
Barbara Diznoff

JUNE 16

Lisa Mirman
Dr. Audrey Heimler

JUNE 18

Richard Reiman

JUNE 21

Lois E. Schottenstein

JUNE 22

Tena Tessler
Barbara Mishkin
Gerald Ronkin

JUNE 24

Carole R. Singer

JUNE 25

Rabbi Peter Kasdan
Claire Smith
Alice Fishman
Joan Binkow

JUNE 26

Dr. Sanford Mackman

JUNE 28

Bonnie Haber

JUNE 29

Barbara Gross
Barbara Slagowitz
Neil Blume
Ann Glickman

JUNE 30

Robert Spitzer

JULY BIRTHDAYS

JULY 1

David Snyder

JULY 2

Lee Mirman

JULY 3

Suzan Gaynes

JULY 4

Sandra Kamin
Linda Albert

JULY 5

June Stern

JULY 6

Dr. Lois Barson

JULY 7

Marilyn Naiditch
Barbara Pressman

JULY 8

Ronda Manasse
Debby Hamburg
Nancy Freund
Dr. Burton Silbert

JULY 10

Hal Schwartz

JULY 12

Dr. Jon Gudeman

JULY 13

Shirley Dubin

JULY 14

Kelli Veit

JULY 15

Jenny L. Walder

JULY 16

Arthur Karafin

JULY 17

Maxine Spitzer

JULY 19

Stephen Helpern
Marvin Morse

JULY 20

Marilyn Taub

JULY 25

Charles Lieberman
Meryl Langbort

JULY 27

Marc Bazilian

JULY 30

Rabbi Michael Eisenstat
Meril Salzburg

JULY 31

Jan Goldsmith
Richard Olin
Nancy Harris

AUGUST BIRTHDAYS

AUG 2

Stephen Winters
Diana Tully

AUG 4

Robert Kaufman

AUG 8

Phyllis Rubinovitz

AUG 10

Ivan Kushen
Evans Tilles
Gerald Rosenthal

AUG 12

Peri Namerow
Harvey Felman

AUG 13

Ruth Orne

AUG 14

Brenda Sax

AUG 19

Suzanne Reiman
Elana Gordon

AUG 20

Joan Cohen

AUG 21

Robert Betagole
Corinne Sniderman
Leonard Libman

AUG 24

Rochelle Tarter
Francine Achbar

AUG 28

Michael Lewis

AUG 30

Diane Gans
Michael Sherrow
Suzan Friedman

HAPPY
Birthday
TO YOU

MAY ANNIVERSARIES

MAY 3, **Dr. Ira J. & Carole R. Singer** celebrating 69 years

MAY 7, **Jeffrey & Susan Schwartz** celebrating 55 years

MAY 24, **Connie & Donald Farkas** celebrating 30 years

MAY 28, **Dr. Howard & Tena Tessler** celebrating 50 years

MAY 29, **Martin & Carol Edelman** celebrating 64 years

MAY 29, **Dr. Jason & Melinda Brandt** celebrating 17 years

JUNE ANNIVERSARIES

JUNE 2, **Roy & Helen Diton** celebrating 65 years

JUNE 3, **Norma & Merle Greenwald** celebrating 51 years

JUNE 7, **Marc & Nancy Bazilian** celebrating 58 years

JUNE 9, **Ralph & Arlene Liebstein** celebrating 26 years

JUNE 12, **Howard & Debbie Weiner** celebrating 49 years

JUNE 12, **Marvin & Shirley Dubin** celebrating 62 years

JUNE 14, **Dr. O. David & Louise Solomon** celebrating 67 years

JUNE 14, **David & Peri Namerow** celebrating 41 years

JUNE 15, **William & Marjorie Sandy** celebrating 70 years

JUNE 16, **Irwin & Sylvia Pastor** celebrating 59 years

JUNE 18, **Skip & Bonnie Wilder** celebrating 56 years

JUNE 19, **Dr. Stuart & Gail Barzman** celebrating 56 years

JUNE 19, **Meril & Richard Salzburg** celebrating 32 years

JUNE 19, **Dr. Burton & Estelle C. Silbert** celebrating 68 years

JUNE 20, **Elaine & Robert Kaufman** celebrating 51 years

JUNE 21, **Dr. Michael & Joan Cohen** celebrating 63 years

JUNE 22, **Neil & Judy Blume** celebrating 62 years

JUNE 24, **Norton & Patricia Baron** celebrating 58 years

JUNE 25, **Paul & Susan Levine** celebrating 27 years

JUNE 25, **Dr. Sanford & Marcie Mackman** celebrating 67 years

JUNE 26, **Barbara & Marty Slagowitz** celebrating 56 years

JUNE 26, **Dr. Jon & Joyce Gudeman** celebrating 61 years

JUNE 30, **Rabbi Stephen & Corinne Sniderman** celebrating 26 years

JULY ANNIVERSARIES

JULY 3, **David & Susan Gorin** celebrating 44 years

JULY 11, **Francine & Stuart Achbar** celebrating 18 years

JULY 3, **Robert & Bonny Israeloff** celebrating 62 years

JULY 22, **Benjamin & Sandra Krause** celebrating 63 years

JULY 4, **Robert & Maxine Spitzer** celebrating 51 years

JULY 29, **Eugene & Judy Krasnow** celebrating 61 years

JULY 6, **Howard & Andrea Lieb** celebrating 59 years

AUGUST ANNIVERSARIES

AUG 1, **Larry & Susan Silton** celebrating 56 years

AUG 28, **Leonard & Bonney Libman** celebrating 68 years

AUG 3, **Ross & Wendy Born** celebrating 47 years

AUG 28, **Evie & Allen Lichter** celebrating 34 years

AUG 7, **Richard & Suzanne Reiman** celebrating 28 years

AUG 29, **Rabbi Howard & Rona Simon** celebrating 35 years

AUG 7, **Philip & Phyllis Lieberman** celebrating 62 years

AUG 30, **James & Elise Galinsky** celebrating 58 years

AUG 14, **Robert & Karen Gary** celebrating 56 years

AUG 16, **Dr. Stephen & Deborah Winters** celebrating 30 years

AUG 18, **Robert & Suzanne Nusbaum** celebrating 22 years

AUG 22, **David & Cyvia Snyder** celebrating 22 years

AUG 23, **Howard & Carole Cohen** celebrating 58 years

AUG 23, **Dr. Robert & Linda Rosenbluth** celebrating 58 years

AUG 23, **Richard & Nessa Levine** celebrating 63 years

AUG 26, **Charles & Anne Lieberman** celebrating 50 years

**Happy
Anniversary!**

MAY YAHRZEITS

APR 29

Julius Klanfer
 Mark Radlo
 Theodore Greenwald
 Susan Blenderman
 Charles J. Fishman
 Douglas Gross
 Pearl Angstreich
 David Lutkoff
 Howard Maybloom
 Ben Liebow
 Dr. Mathew Podolin
 Dr. Bernard Levine
 Ann Emmerman
 Melvin Morris
 Simon Datnoff
 Lena Wolowitz

MAY 6

Lucille Rosin
 Rae Wolicki
 Jerry M. Hamovit
 Edythe Winters
 Ruth Haber
 Dorothy Rosenzweig
 Sydney Pastor
 Phillip Kaye
 Harry Horwitz
 Christine Lasker
 Todd Andrew Pastor
 Milton A Wolf
 Ruth Gary
 Dorothy Goldsmith
 Sadie Ringler
 Louis Kaye

MAY 13

Robert Bobowick
 Hymen Pollack
 Irving Eisenstat
 Marion Klionsky
 Bella Soifer
 Dr. Robert L. Katz
 Betty Hess
 Max Levy
 Clarence David Freund

MAY 20

Faye Leah Robiner
 Jack Kreiss
 Leo Lieberman
 Meyer Gerson
 Harry J. Tobias
 Florence Skversky
 Maurice Schottenfeld
 Gilbert Glickman
 Ari David Moses Morse
 Lillian Kreiss

MAY 27

Abe Rosenzweig
 Ethel Podolin
 Frederick Burton
 Sylvia Schottenfeld
 Rose Orlic
 Maurice Azerad
 Pearl Fishman
 Sheila Mahler
 Howard A. Sabin
 Phillip Sinai

JUNE YAHRZEITS

JUNE 3

Belle Novick
 Howard W. Fineshriber
 Albert Hess
 Lucille Lee
 Abraham L. Berk
 Jason Martin Freund
 Regina Moyer

JUNE 10

Benjamin Gilfix
 Jean Goldberg
 Arnold Rosen
 Robert Kamin
 Leonard Ploener
 Lillian Greenwald
 Bruce A. Sands
 Jeff Posner
 Lydia Heller Garner
 Ruth Settel
 Charlotte Tendler
 Ben Sherrow
 Wilson R. Kaplen

JUNE 17

Sol Weiner
 Ann Soifer
 Hannah Wedeen
 Minnie Riefs
 Max Klionsky
 Jackson Horowitz
 Edwin B. Goddin
 Joseph Tobias
 Ellen Markus
 Sam Wolf
 Dorothy Schmierer
 Mitchell A. Robiner
 Jerome Salle

JUNE 24

Arnold E. Fein
 Sidney Alexander
 Mrs. Bessie Gandel
 Gottfried Apelt
 Arthur Post
 Howard Hess
 Louis Davis
 Barney Dreyfuss
 Hannah Opal Bilgrei
 Gloria Libien
 Frances Yavetz
 Joseph Rosenberg

JULY YAHRZEITS

JULY 1

Michael Katz
Ralph Singer
Gertrude Edelman
Richard Siegel
Jack Solomon
Edward Singer
Gertrude Lazorow
Beatrice Alexander
Edward Zolte
Norman Tendler
Fanny Wexler
Samuel Zolte
Chloris Herr
Lucille Biron
Norman A. Grocer
J. Brock Albert
Ivy Diton

JULY 8

Samuel Rubinovitz
Morris Golub
Jodie Grossman
Sadie Lefcowitz
Lillian Morse
Israel Shapiro
Charles Kohn
Edith Kaplan
Mina Levy
George Brickner
Robert Berns
Harry Boorstein
David Freedman

JULY 15

Marilyn Liebovitz
Daniel Rosenbluth
Robert Blumfield
Ben Brooks
Robert Warren Gilbert
June Kaufman
Blanche Langs
Samuel Polinsky
Virginai Ginny Horne
Harry Goldman
Clara Kaplan
Abraham Fein
Dorothy Jacobson
Murray Klanfer
Sheila Goldblatt
Nathan Griesman
Louis B. Olin
Carla Liebow Hon

JULY 22

Marcia Goldberg
Alan J. Schottenstein
David Olin
Jeanette Goldschmidt
Esther Glickman
Gita Kelman
Joseph Harburger
Frances Gorin

JULY 29

Barney Cole
Isaac Aronsohn
Sylvia Davis Wolf
Gaynelle Greene
Samuel Dubin

AUGUST YAHRZEITS

AUG 5

Samuel M. Robiner
George L. Ginsburg
Benjamin Salk
Esther Adler
Samuel Burgin
Regina Bobowick
Philip Kaye
Joseph Pollack
Richard L Weil
Mildred Mallets
Marion Reiter
Lois Hertz Lesser

AUG 12

Jean Wexler
Samuel N. Feidelman
Joseph Goldberg
Harry Riefs
Evelyn Cohen
Celia Sherrow
Judith Goldie
Harry Coville
Nathan (Bob) R Rosenthal
James Ackerman
Louise Schloss Nusbaum
Elliot Cohen

AUG 12 cont.

Ida Medvene
Ernest M. Ellison
Herman Angstreich
Rose Barzman
Andrew Eldredge

AUG 19

Rose Dubin
Abraham Jerry Leis
Ralph Grossman
Pauline Polinsky
Herman Kushner
Ernestine Berson
David Silbert
Peter Kitay
Arthur Boorstein
Alan David Weinstein
Alfred Steiner
Susan Burton

AUG 26

Harold Strogoff
Reuben Pollack
Rose Lutkoff
Harvey Zatkow
Sadye Snyder
Lillian Goldfarb
Omar King
Oscar Resnick

Yahrzeit Donations

In Memory of

Nora Balk
Faye Baron
Diane Theresa Betman
Doris Blueglass
Sara Cantor
Gary Cole
Jeanette Golden
Natalie Golub
Kermit "Kit" Green
Dr. Milton Jacobson
Belle Katz
Ethel Kaye
Ethel Kaye
Dr. Elias Langs
Aaron Lipschultz
Steven J. Lutkoff
Morton Margolies
Claire Siegel
Anita Stein
Bert W. Struth
Belle Weiss
Milton Wolf

Donated by

Suzan Friedman
Dr. Norton Baron
Lee Ann Salle
Murray Blueglass
Judy Blume
Tena Tessler
Gloria Sabin
Esta Grocer
Robin Green
Sue Jacobson
Barbara Struth
Deborah Nyman
Carole Cohen
Nancy Eisenstat
Joni Berg
Suzanne Lutkoff
Nancy Cohen
Lee Ann Salle
Dr. Sanford Wolf
Barbara Struth
Carol Edelman
Dr. Sanford Wolf

DONATIONS REPORT

BIW Kitchen Fund

In honor of my in-laws, Sylvia & Irwin.

Sylvia & Irwin Pastor

by Sharon Levite

Choir Fund

In appreciation of services.

Temple Beth Israel

by Stanley & Ellie Israel

Endowment Fund

In appreciation of services.

Temple Beth Israel

by Marilyn Taub

General Fund

In appreciation of services.

Temple Beth Israel

by Joni Burg

by Rabbi Richard & Diane Steinbrink

In celebration of your
50th Anniversary!

Stevan & Linda Brooks

by Garry Brooks

In loving memory of my brother,
Richard M. Plotkin.

Temple Beth Israel

by Toby Lee Gilfix

In memory of Everett Behrendt.

Temple Beth Israel

by Marc Behrendt

by Glen Behrendt

In memory of Raul Mederos,
father of Connie Mederos-Jacobs.

The Jacobs Family

by Lori Dorman

Rabbi Discretionary Fund

In honor of your birthday.

Stan Rodbell

by Skip & Bonnie Wilder

In loving memory of Joseph
& Bessie Diton.

Temple Beth Israel

by Roy & Helen Diton

Social Action Fund

Missing mom every day. Can't believe
it has already been 5 years. We love
you.

Garry Brooks

by Beth & Joe Sterling

Torah Silver Restoration Fund

In memory of your brother.

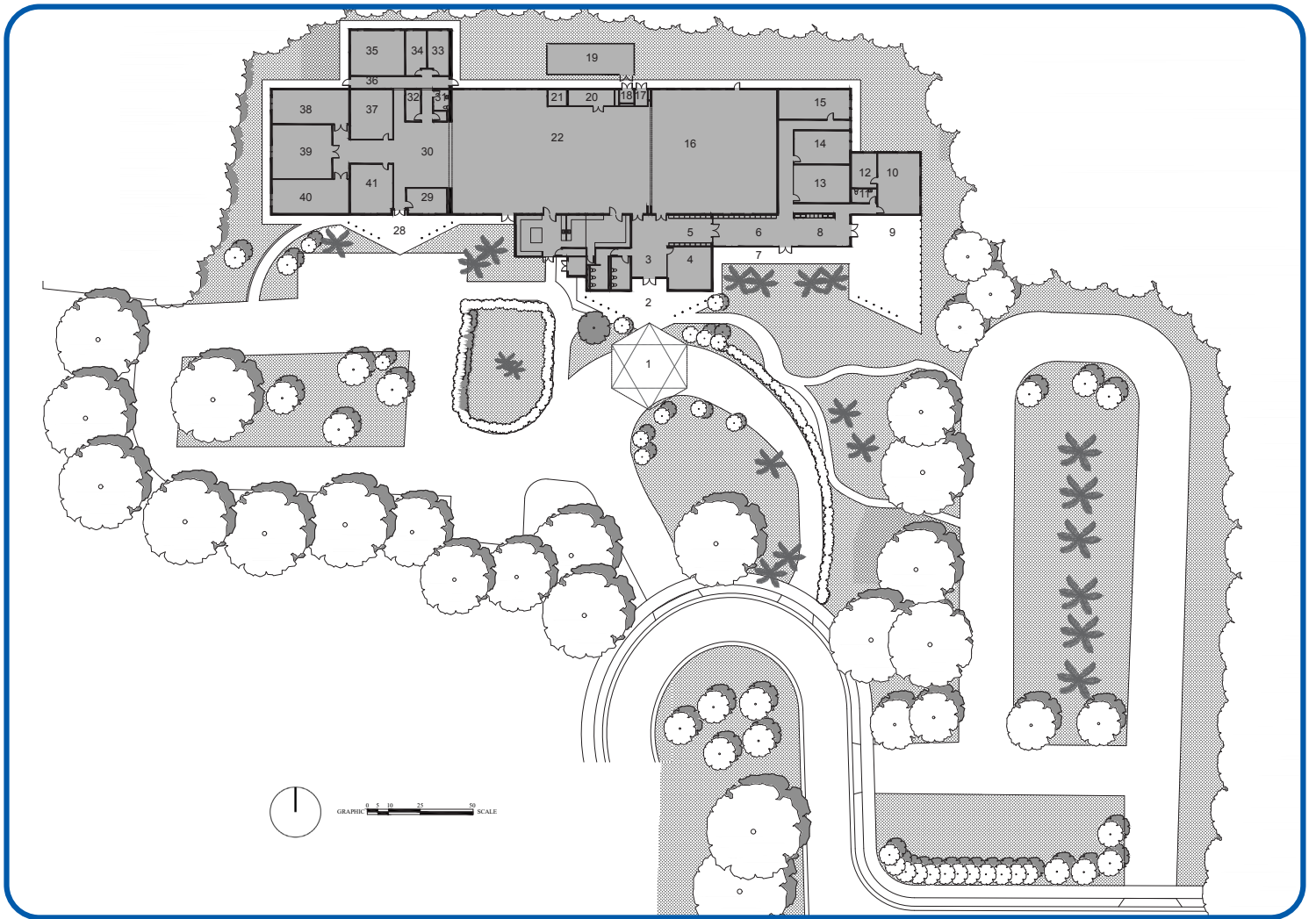
Toby Lee Gilfix

by Gloria Feibus

Thank You for your Donations!

LONG-RANGE PLANNING

Temple Beth Israel Vision for the Future.



The Essential Guide to Buying New Construction in Sarasota

When buyers enter the process of purchasing new construction unrepresented, they typically don't know all the questions they should be asking, nor the protections that should be put in place on their behalf. They unwittingly put themselves at a distinct disadvantage contractually, financially, and as it relates to making the right decisions for their lifestyle goals.

By working with a Realtor who has extensive experience in the local market AND expertise in Sarasota's new developments, buyers can ensure they are equipped to make fully informed decisions. Having someone that is advocating for their interests every step of the way leads to more favorable outcomes and peace of mind.

Working with a Realtor vs. Going Direct

We interviewed sales representatives and industry veterans of the most coveted new construction projects in Sarasota about this question- including the Ritz Carlton Residences & The St Regis Residences Longboat Key Resort. We also consulted Nicole Christie, a Real Estate Attorney at Williams Parker Law Firm.

WHY should buyers work with a seasoned Realtor for new construction purchases? Here are the top 4 reasons they collectively shared:

1) You Don't Get a Better Price if You Work Directly With the Developer.

It is a common misconception from buyers that if they do not have a Realtor, they will get a better price. Realtor compensation is already built into the financials of each project. Each developer/builder wants to sell their product. They rely heavily on Realtors to bring them customers. **You as the buyer do not save if you don't use one, nor does cost you more if you do** (see #4).

For a data point on the now completed Ritz Carlton Residences in Sarasota's Quay District, 60% of the purchasers were brought by a Realtor. For another Ultra-Luxury project on Lido Beach that number is closer to 80%.

If you are not represented by a professional who fully understands the dynamics of the local real estate market- both existing inventory and new construction- you are in fact putting yourself at a disadvantage on a variety of fronts.

"I believe that one of the most common misconceptions from buyers is that if they do not have Realtor representing them, they will get a better deal from the developer. This is completely untrue."

Lynn Morris | The Residences | St Regis Longboat Key Resort

2) All New Construction Contracts Favor Developers/Builders.

New Construction contracts and associated condo documents can be a daunting *hundreds* of pages long. A savvy Realtor knows how to guide you on what things may be negotiated on your behalf, introduce options that you may not have even considered, then work as your advocate to get the most favorable terms. This could be internal modifications to the build out. You may want to alter the floor plan and/or ask for design upgrades. It may also be changes to the contract itself- for example you want to add performance benchmarks or financing thresholds to hold the developer more accountable.

We have our finger on the pulse of the market and are able to identify which resources and experts to bring to the table for every specific buyer's needs. For example, we can introduce our buyers to specific local attorneys that have had success negotiating with a particular developer.

Our experience negotiating with each specific developer enables us to get as much accomplished for you as the buyer as possible. We can tell you if something is reasonable or if it's not reasonable. We understand

what details should be flushed out at the contract stage all the way through to how to protect your interests during the final walk-through prior to closing.

"Lee adds incredible value to the buyer's home purchasing journey in a number of ways. His previous experience working with buyers in new construction projects allows his buyers to feel confident with the decisions they make. They can rely on his good judgment with things like price, availability, and quality."

Nicole Christie | Attorney at Law | Williams Parker

3) Working With an Experienced Realtor Empowers You to Feel Confident About Your Decisions.

Your real estate purchase is one of the biggest investments you make. It is important to understand all the options and the trade-offs when comparing the builders, the brands, locations, floor plans, resale potential, and relative pricing so that you know you are making the right decision for you.

We understand the local landscape and can provide comparables for historic, current, and future pricing on a property. We help you understand if a specific property's value is going up or down in the future based on what is happening around it.

When you partner with us, we will ask you the hard questions to get you to think about what you really want. These types of conversations are important to getting to what is the best match for you personally.

4) It Costs You Nothing to Have Professional Representation.

In fact, there may be costs to NOT having it. Realtors' compensation is paid from the proceeds of the Seller, so there is no financial outlay for you as a buyer.

Our team works systematically to help each buyer process every option available to them, gain clarity on what they are NOT choosing as much as what they are, and emerge with peace of mind that they are making the right choice for their needs. Our real estate market offers diverse products, price points, and lifestyle experiences. The goal is to ensure our clients' financial and lifestyle goals have been thoroughly addressed, ensuring their long-term happiness and enjoyment.

Is New Construction Really Right for You?

Many buyers in our Sarasota Real Estate market are drawn to the idea of buying into new construction projects. The allure of new is driven by the investment value of buying at pre-construction pricing, the intrigue and ease of having the latest in design/technology and building codes, and sometimes because of sheer lack of existing housing inventory.

There are situations where buyers- particularly those new to the Sarasota real estate market- are lured into the "sexiness" of new construction, but then as we take them on a deeper dive of their wants and needs, we figure out that new construction may not actually be the best match for them.

Good Advice Pays Dividends

Sarasota is now in its third century and going through many amazing changes. What it is going to look like in the next several generations is very different than what it is now. It pays many dividends to be thoughtful and thorough in your lifestyle and financial investment.

Make sure you have great advice so that you have financial and lifestyle decision that you are proud of for many, many years to come.

For the complete article go to:
www.investmentsinsarasota.com/buying-sarasota-new-construction



Lisa and Lee Mirman, Duke MBAs

Licensed Real Estate Broker

941 587 0740

InvestmentsInSarasota.com



2021 Five Star Award* Winner!

For Exceptional Client Satisfaction and Service in 2021 (12 Years Running)

*Less than 1% of agents to be named 2021 Five Star real estate agent in Sarasota!





PROUD TO BE A PARTNER

IN BUILDING THRIVING RELATIONSHIPS ACROSS
ORGANIZATIONS, RELIGIONS, AND A COMMUNITY
WHERE EVERYONE BELONGS

Each one of us has the potential to impact a person, a cause,
a community. For 40 years, the Community Foundation of Sarasota
County has matched donors to causes, creating lasting impact.

You can be the one to make a difference.



COMMUNITY
FOUNDATION

of Sarasota County



Family Owned. Family Focused.

At Toale Brothers, we understand the value of family in planning for the future and honoring loved ones. That's why we are still owned and operated by the Toale family, who have provided support, guidance and helpful resources to the people of our community during their time of need since 1948.

**Proud to be a part of Sarasota's history.
Honored to be a part of your family's
celebration of life.**

941.955.4171 • www.ToaleBrothers.com

TWO GREAT LOCATIONS WHERE THE LOCALS EAT

THE ROSEMARY ROSEMARY & THYME

BREAKFAST, LUNCH OR DINNER, WE DO IT ALL



WE ALSO CATER!

Let us help make your next gathering
unforgettable.

411 & 511 N. Orange Avenue | 941.955.7600
RosemarySarasota.com



Greetings From
AVIVA, SARASOTA
 The Spirit of Sarasota, Brought Home

At Aviva, our residents do more than call our community home. They live here, with purpose and meaning at every turn. Embracing the beauty of Sarasota and our 27-acre campus. Curating a thriving arts and cultural scene. And ensuring your peace of mind surrounded by loving staff. As a COVID Vaccine Mandated Campus for residents, associates and vendors, Aviva is focused on safety and security for everyone in our community. [Visit us at AvivaSeniorLife.org](http://AvivaSeniorLife.org)



1951 N. Honore Ave. | Sarasota, FL 34235
 941.377.0781 | AvivaSeniorLife.org

Independent Living | Assisted Living | Memory Care | Skilled Nursing & Rehabilitation Assisted Living Facility #8951 

Secur-All Insurance Agency

- AIG
- CHUBB
- VAULT
- PURE
- SAFECO
- UNITED
- UNIVERSAL
- PROGRESSIVE



“Thank You to past, present & future clients!” – Sandra Smith

6350 Gulf of Mexico Dr STE 106 Longboat Key, Florida 34228-1501 | (941) 383-3388 | WWW.SECUR-ALL.COM

Discover

a new way to
care for your skin

- Comprehensive Dermatology
- Skin Cancer Detection
- Mohs Skin Cancer Surgery
- Cosmetic and Laser Services
- Medical Spa Treatments



David S. Sax, M.D.
Board Certified Dermatologist

Carlee LaPensee, MSN, APRN-C
Dermatology Certified Nurse Practitioner

Jesse LeBaron, MPAS, PA-C
Physician Assistant



8451 Shade Avenue, Suite 205
Sarasota, FL 34243

941-202-6274



TOP DOCTORS®
2021

2012	2017
2013	2018
2014	2019
2015	2020
2016	2021

www.upderm.com

we **CARE** for you
because we about you.

We believe your doctor should get to know you personally, have the flexibility to see you at any time, and commit to delivering benefit-oriented care and advice tailored to your unique needs.

Discover how LernerCohen puts the **CARE** in Healthcare. Schedule a meet and greet to see if concierge care is right for you.



LERNER • COHEN
A CONCIERGE MEDICAL PRACTICE

The Doctor Is In. Always.™

941.953.9080 • LernerCohen.com
1921 Waldemere Street, Suite 814 • Sarasota, FL 34239

Dr. Brad S. Lerner | Dr. Louis M. Cohen | Dr. James R. Cocco | Dr. Amy M. Roth



ROBERT TOALE AND SONS FUNERAL HOME

● PALMS MEMORIAL PARK ● MANASOTA MEMORIAL PARK ● WIEGAND CHAPEL

Gerald "Gerry" Ronkin

Jewish Community Liaison

170 Honore Ave. Sarasota, FL 34232

Dignity[®]
MEMORIAL

 LIFE WELL CELEBRATED[®] 



Office: (941) 371-4962 Cell: (941) 809-5195 Gerry.Ronkin@DignityMemorial.com

WE'VE GOT YOU COVERED.

Print/Copy

Brochures • Business Cards • Catalogs • Mailings
 Envelopes • Flyers • Invitations • Labels
 Manuals • Menus • Forms • Packaging • Posters
 Pocket Folders • Stationery Packages

Signs/Large Format

Banners • Vehicle Wraps • Floor Graphics • Window Graphics • Wall Graphics
 Yard Signs • Retractable Banners • Pop-up Tents • Table Cloths • Installation Services

Promotional Products and Apparel

Embroidered Apparel • Silkscreen T-shirts • Logo'd products



Sir Speedy[®]

PRINT | SIGNS | MARKETING

3939 S. Tamiami Trail, Sarasota, FL 34231 | (941) 922-1563 | SirSpeedySarasota.com

Introducing Newsies – the Observer's membership program.

Our 100% local content helps you stay **engaged** and **connected** with your community. And now we've created this program to allow readers to form a **stronger connection** with our newsroom and each other.

Your membership **supports independent local journalism** here, at home, in your neighborhood.*



BE A NEWSIE
\$5 /mo.
 Or \$50 year

Membership benefits include:

- Quarterly e-newsletter from the Newsroom
- Invitations to member-only events
- Opportunities to connect with our journalists

Questions?
 Call 941-366-3468 or
newsies@yourobservers.com

*Don't worry - we're still free and always will be.

JOIN TODAY, VISIT
YourObserver.com/newsies

Observer
 You. Your Neighbors. Your Neighborhood.



A Longboat Key Landmark



RESTAURANT
 BREAKFAST | BRUNCH | LUNCH | DINNER
 HAPPY HOUR | CRAFT COCKTAILS | FINE WINES

DELI AND BAKERY | RETAIL FINE WINES
 PARTY SPECIALTIES | CATERING
 CORNER STORE

WWW.HARRYSKITCHEN.COM

5600 Gulf of Mexico Drive, Longboat Key 941-383-0777



Bring this coupon for

ONE FREE

Glass of House
 Wine, mimosa,
 Tea, Coffee or
 Soft Drink

TA



Canandaigua
National
Trust Company

Serving Sarasota since 2009

Building upon our financial legacy since 1887.

Canandaigua National Trust Company opened its doors in 2009, but our corporate history began in 1887 with our affiliate, Canandaigua National Bank & Trust (CNB).

Building upon their legacy in upstate New York, our local and extended team of highly credentialed professionals deliver time-tested investment strategies and exceptional trust and estate services to the greater Sarasota area.

Discover the difference, call today.

FINANCIAL PLANNING • INVESTMENTS • TRUST & ESTATE • RETIREMENT • FAMILY WEALTH

Investments are not FDIC insured, not bank deposits, not obligations of, or guaranteed by, Canandaigua National Bank & Trust, Canandaigua National Trust Company of Florida, or any of their affiliates. Investments are subject to investment risks, including possible loss of principal amount invested. Investments and services may be offered through affiliate companies.



SARASOTA
1586 Main Street
CNTrustCompany.com
(941) 366-7222

PAUL TARANTINO
SVP, Wealth Advisor

SUZANNE ELLIN
JD, CGMA, CTFA, CFP®
SVP, Trust
Administration Officer

PROPERTIES

Title

Providing Real Estate Transaction and Title Closing Services Throughout Florida

Trusted • Experienced • Committed
Offering Exceptional
Customer Service and Expertise

Contact Us for a FREE Quote On Your Next Real Estate Deal



Maury Azerad, Esq.
Attorney at Law

Offices
Sarasota Venice Tampa
(941) 260-9221 PropertiesTitle.com

The store you love.
Delivered.



publix.com/shop

powered by
 instacart

Item prices vary from in-store prices.
Service fees may apply.
Available in select zip codes.

Local CPA ~ Tax and Accounting

387-0926

5370 Gulf of Mexico Dr #205

Above Blue Dolphin

You can go to the beach, play tennis or golf, go fishing, or view the arts - While We Do the Numbers!



FLORIDA UROLOGY
SPECIALISTS

Personalized Care for Your Specialty Needs
from Board-Certified Physicians.

www.flurologyspecialists.com

Appointments: (941) 309 - 7000



1 S. School Avenue #200
Sarasota, FL 34237

997 US 41 Bypass N. #201
Venice, FL 34285

6310 Health Pkwy. #210
Lakewood Ranch, FL 34202

5860 Ranch Lake Blvd. #200
Bradenton, FL 34202

2345 Bobcat Village Ctr. Rd. #201
North Port, FL 34288

4120 Woodmere Park Blvd. #8A
Venice, FL 34239

4351 Cortez Rd. W. #201
Bradenton, FL 34210

EIHAB AKARY – M.D.
WINSTON E. BARZELL – M.D.
JEREMY BERGAMO – M.D.
A. JOSEPH BILIK – M.D. FACS
JOSHUA T. GREEN – M.D.
MATTHEW J. PERRY – M.D. FACS
WILLIAM J. TINGLE – M.D. FACS
THOMAS H. WILLIAMS – M.D., FACS



Your #1 Source for Community & Tourism Information on the Gulf Coast of Florida.



www.longboatkeychamber.com



serving Longboat Key, St. Armands Key & Lido Key

***proudly supports Temple Beth Israel
and our entire Longboat Key Community.***

Longboat Key Visitor Center | 5390 Gulf of Mexico Drive, Suite 102 | 941 383 2466
(Located in the Centre Shops of Longboat Key)

Grow With Us.

Private Wealth . Asset Management . Institutional Investment Management



CUMBERLAND
— ADVISORS —

Investment Management

Our private wealth practice offers institutional-level money management for individual investors, like you. Since 1973, we have been providing investment management service to institutional clients—-independent nonprofits, foundations, qualified retirement plans and government entities. As a private investor, you can leverage that same independent and insightful expertise in the management of your portfolio.

Call today to learn how our investment strategies can help you.

A Registered Investment Advisory Firm Since 1973

800.257.7013

EXTRAORDINARY SEAFOOD, ORDINARY PRICE!

THE
LAZY LOBSTER
LONGBOAT KEY



Mission Statement

Our mission is to be the neighborhood choice for our guests and their families; proudly providing a casual atmosphere that consistently exceeds expectations. Great food, high energy and honest friendly people are the keys to our success. Whether you're seeking a casual night out or celebrating a special occasion, we always strive to make your experience **GREAT!**

FEATURING:

- Live Maine Lobster
- Fresh Seafood
- Chicken, Pasta, Beef & More
- Daily Specials
- Wine, Beer & Cocktails
- Outside Dining Available
- Early Dining Menu & Happy Hour 3:30 - 5PM
with Entrées priced from \$15. Cocktails from \$7



2020-2021

LUNCH: OCTOBER - MAY 11 AM - 2 PM

EARLY DINING: 3:30 - 5 PM

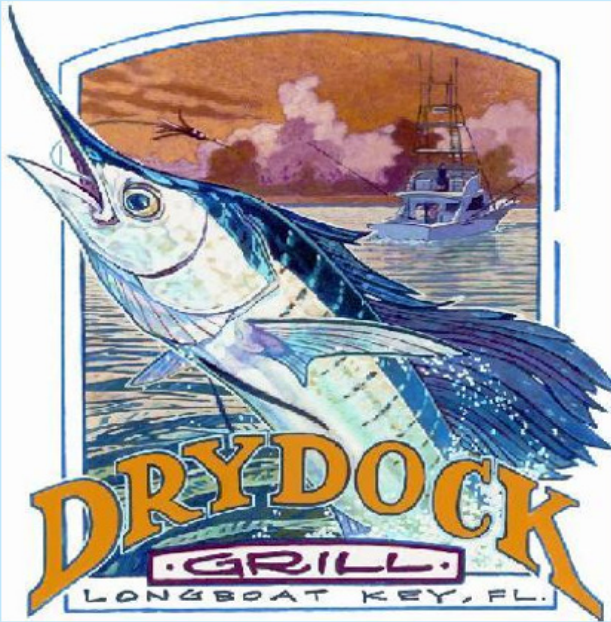
DINNER: 3:30 - 9 PM

Located in the Centre Shops

5350 Gulf of Mexico Drive, Longboat Key, FL 34228

TELEPHONE: (941) 383-0440

www.lazylobsteroflongboat.com



412 Gulf of Mexico Drive
941-383-0102

Longboat's Neighborhood Grill
CASUAL INDOOR & OUTDOOR DINING
ON BEAUTIFUL SARASOTA BAY!

*Please patronize these
advertisers and when
you do, thank them for
their continued support
of TBI.*

Honors Program



The Temple is happy to announce the establishment of a new program to enable members of the congregation to provide a perpetual tribute in honor of a loved one, or another person of their choice. The honor will be in the form of a LIFE & LEGACY gift made in the honor of the person designated.

To establish such an honor, the donor must provide an afterlife LIFE & LEGACY Gift Confirmation, or a current qualifying gift to the Endowment Fund, in an amount of \$10,000 or more. The name of the designee would then be enrolled as a member of the LIFE & LEGACY Honors Society. The names of all such honorees, together with the names of the respective donors, will be permanently and prominently displayed in the Temple and in the Temple's weekly electronic and print bulletins and annual directories.

Any current members of the LIFE & LEGACY Society who have already provided a qualifying Gift Confirmation, or a current qualifying gift to the Endowment Fund, are invited to submit the name of a designated honoree for inclusion in the LIFE & LEGACY Honors Society.

For more information, contact Isaac Azerad at the Temple office (941) 383-3428 or iazerad@tbi-lbk.org

DG | SALON

David Gregory

at The Centre Shops

- SERVICES FOR -
MEN & WOMEN

- HAIRCUTS
- COLOR SERVICES
- MANICURES & PEDICURES
- WAXING
- GEL MANICURES

Call For An Appointment
(941) 383-8699

- LOCATED IN THE CENTRE SHOPS -
5370 Gulf of Mexico Drive Ste. 103
Longboat Key, FL 34228



Youthful Aging HOME CARE

30 Years of Expertise

You may not need home care today but be prepared and become educated on the process...call today for a complimentary consultation

Private Duty Home Care—Open on Longboat Key

For a Private Consultation, Call or Email
941.706.2695

nkobritz@youthfulaginghomecare.com
[|youthfulaginghomecare.com](http://youthfulaginghomecare.com)

License 299991326

White Sands Cleaner Longboat



Denny Rudd, Proprietor

519 Bay Isles Parkway
Longboat Key, Florida 34228
941.383.6312

Mon. - Fri. 8:00 - 6:00 • Sat. 8:00 - 2:00 • Closed Sundays

ST. ARMANDS CIRCLE



470 JOHN RINGLING BLVD.
941-388-3566

LONGBOAT KEY



5370 GULF OF MEXICO DR.
941-383-3787



Blue Dolphin Cafe

Waffle with the Works and Mimosa



“Great thanks and appreciation to all the TBI members who volunteer their time, expertise and resources to keep our Temple community thriving during this pandemic”

Purmort & Martin

Insurance Agency LLC | Protecting what matters the most

NAILS OF LONGBOAT KEY

Appointments Available

Walk-ins Welcome

(941) 383-9107



Nail Plaza (Next To Publix)

521 Bay Isles Pkwy
Longboat Key, FL 34228

Monday - Saturday 9am - 7pm

*“Special thanks and appreciation
to Terry, Shana and Jen
for their continued dedication”*

*Please patronize these advertisers and when you do,
thank them for their continued support of TBI.*

Amore

RESTAURANT



Executive Chef
Tito Vitorino



Amore Restaurant has relocated to the Colonial Village Shopping Center on Fruitville and Lime. Our menu is offering an Italian menu highlighting a couple of our best sellers as Branzino essiccato and the Rack of Lamb ala balsamic. Our Portuguese menu is offering the amazing and unique seafood cataplana, salted cod a Lagareiro among others.

Amore Restaurant has 64 seats inside, including 7 booths separated by plexiglass and 20 seats outside.

We are looking forward to serving you very soon at our new location:
180 N. Lime Avenue Sarasota FL 34237 | (941)383-1111 | www.amorelbk.com

MIC INSURANCE

EXPERIENCE
KNOWLEDGE
SOLUTIONS

*Our team of professional provides superior service
and expertise for all your insurance needs.*

*Mike Mailliard ~ Lacey Weaver
Allen Hovis ~ Chloe Gardner
Matthew Mailliard ~ Julia McIlreavy
Haley Jestings ~ Samantha Ryan
Jaimie Simpkins*



- Home • Condo • Auto
- Umbrella • Boat

941.554.8909

595 Bay Isles Rd. Suite 215 | www.micinsurancefl.com



Design Is The Silent Ambassador of Your Brand

CREATIVE SERVICES

BRANDING

Brand Platform
Rebranding
Brand Consulting

EVENTS

Branding
Collateral/Ad(s)
Social Media Graphics

WEB

Website Design
E-Newsletter Design
Social Media Graphics

PRINT

Collateral
Editorial Design
Packaging

Every project is unique & receives a custom quote.

falynbcreative.com



MAISON BLANCHE
RESTAURANT



941-383-8088

2605 GULF OF MEXICO DR, LONGBOAT KEY FL 34228
WWW.THEMAISONBLANCHE.COM

Sympli, Lisette L Montreal,
Holland Ave, Lisa Todd,
Planet, Top Ligne ... and more.

EVELYN ARTHUR



WEAR TO GO.

Evelyn & Arthur - Downtown Sarasota

1480 Main Street Sarasota

941-365-2210 [f](https://www.facebook.com/evelynandarthur) [i](https://www.instagram.com/evelynandarthur) [t](https://www.tiktok.com/@evelynandarthur) [p](https://www.pinterest.com/evelynandarthur) evelynandarthur.com

May

Temple Event Calendar

SUNDAY	MONDAY	TUESDAY	WEDNESDAY	THURSDAY	FRIDAY	SATURDAY
1 Education Center Activities will resume in the fall. Keep your eyes out for new brochures!	2 Long Range Planning Mtg 4pm ZOOM	3 Judaism Discussion Class ZOOM 11:00 AM	4	5	6 Choir Call 6:45 pm Friday Shabbat Service 7:30 PM	7 Shabbat Morning Service & Torah Study 10:00 AM
8	9	10 Judaism Discussion Class ZOOM 11:00 AM Executive Mtg 2pm ZOOM	11 12pm Men's Club lunch – Lazy Lobster	12 Membership Meeting – Social Hall 1:00 pm	13 Shabbat Dinner 5:30 pm Choir Call 6:45 pm Friday Shabbat Service 7:30 PM	14 Shabbat Morning Service & Torah Study 10:00 AM
15	16	17 Judaism Discussion Class ZOOM 11:00 AM	18	19 Ritual Committee Mtg 10:30 am ZOOM	20 Choir Call 6:45 pm Friday Shabbat Service 7:30 PM	21 Shabbat Morning Service & Torah Study 10:00 AM
22	23	24 Judaism Discussion Class ZOOM 11:00 AM Trustees Board Mtg 2pm ZOOM	25	26	27 Choir Call 6:45 pm Friday Shabbat Service 7:30 PM	28 Shabbat Morning Service & Torah Study 10:00 AM
29 	30 Temple Office Closed – Memorial Day	31 Judaism Discussion Class ZOOM 11:00 AM				

MEN'S CLUB MEMBERSHIP

If you haven't joined the Men's Club for 2022-2023, please do so by mailing a check for \$50.00, made out to the Men's Club. Simply mail or drop off to **Temple Beth Israel**, 567 Bay Isles Rd. Longboat Key, FL 34228.

NAME: _____

ADDRESS: _____

PHONE: _____ CELL: _____

MEMBER STATUS:

NEW MEMBER [] RETURNING MEMBER []

SPECIAL INTERESTS, HOBBIES, and/or TALENTS:

BETH ISRAEL WOMEN MEMBERSHIP

If you haven't joined the Beth Israel Women (BIW) for 2022-2023, please do so by mailing a check for \$40.00, made out to the BIW. Simply mail or drop off to **Temple Beth Israel**, 567 Bay Isles Rd. Longboat Key, FL 34228.

NAME: _____

ADDRESS: _____

PHONE: _____ CELL: _____

MEMBER STATUS:

NEW MEMBER [] RETURNING MEMBER []

SPECIAL INTERESTS, HOBBIES, and/or TALENTS:

CONGRATULATIONS!

Incoming officers and trustees.



“ Rabbi Sniderman (second row) installed the 2022-2023 new Officers and Trustees from left to right: Connie Mederos-Jacobs, Mike Boorstein, Susan Newmark, Sandy Packard, David Gorin, Marion Levine, Bob Vigder, Alan Goldfarb, Barbara Pressman.”

EDITORS' NOTES

Writers welcome! The deadline for submission of announcements and articles is the 10th of the preceding month for publication. All submissions should be forwarded as Microsoft Word email attachments to packard@oakland.edu.

The *Bulletin* has been blessed with many copy editors who find most of our errors before we go to press. Their generous dedication results in a very polished *Bulletin*. Our reviewers are **Richard Olin**, **Elise Galinsky**, **Carole Shaw**, **Estelle Silbert**, **Gloria Sabin**, **Lewis Moyer**, **Jen Shaw** and **Shana Johnson** -

all ably coordinated by *Bulletin* Co-Editor, **Lynn Burton**. To volunteer to join this group, email lynnieburton@gmail.com. We are also especially grateful to **Barbara Pressman** and **Allan Goldfarb** for obtaining our advertisers in this stringent economic environment for local businesses. Please patronize these advertisers and when you do, thank them for their continued support of **TBI**. Their ads make the *Bulletin* and the **TBI Directory** possible.

Dr. Sandy Packard & Lynn Burton
Co-Editors