



All Toyota Green Wave Project

All Toyota Harmony with Nature Working



What we can do for better environment

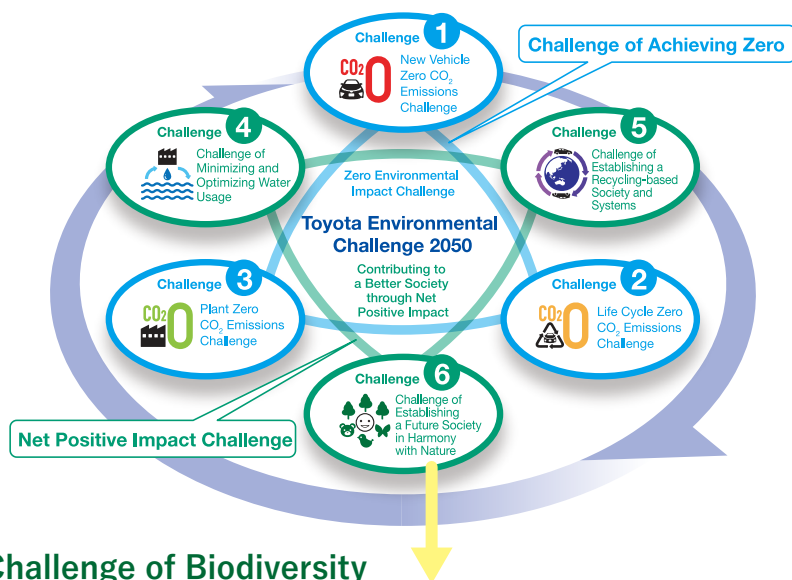
I All-Toyota Environmental Activities: Toyota Environmental Challenge 2050

Challenge of Establishing a Future Society in Harmony with Nature

The following six challenges of Toyota are to reduce environmental impact in order to achieve a net positive impact.

We are committed to continue initiatives steadily toward the year 2050 in order to realize sustainable development together with society.

Challenge 6 is one of the core initiatives to aim for looking beyond zero.



II Challenge of Biodiversity

Challenge 6 Challenge of Establishing a Future Society in Harmony with Nature

Globally roll out conservation activities as
"All-Toyota" projects to in and outside Japan



Established three future-oriented projects

● **Green Wave Project** → Connecting communities

● ESD Project → Connecting to the future

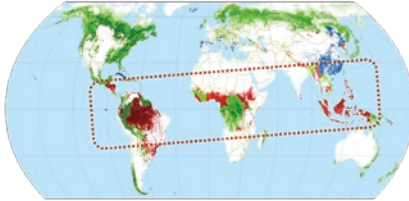
● Today for Tomorrow Project → Connecting with the world

III Green Wave Project

1. Social awareness

Habitats in each region **are still segregated** due to economic development, and **biodiversity losses** have not stopped.

Forests equivalent of 14% of the land area of Japan are lost annually.



■ Regions with decrease in forest
■ Regions with increase in forest
■ Regions with slight decrease or increase in forest
(-0.5% ~ +0.5% per annum)
(Ministry of the Environment Global Forest Resources Assessment)

In surrounding forests, grasslands, waterfronts, swamps, development is causing habitats to shrink and segregate.

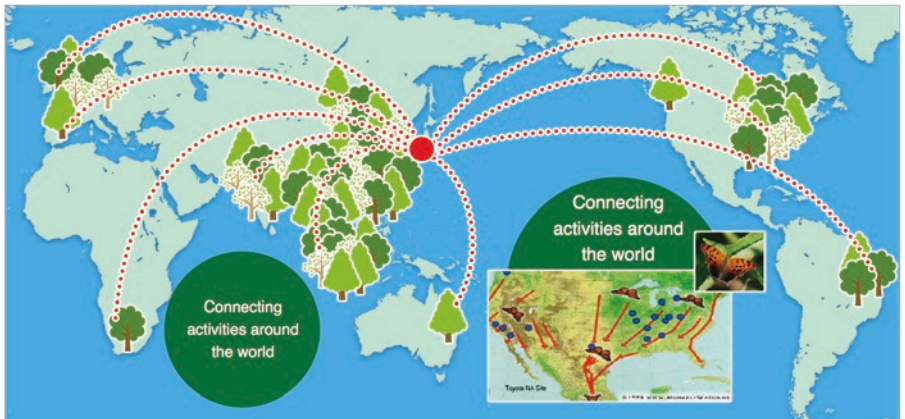


It is important to **restore** the fragmented habitats quickly

2. Objective

Expanding the range of plant forests and habitat preservation activities will be connected like green corridors

Through this activity, animal habitats will be expanded, which leads to ecosystem protection and nature restoration. Furthermore, we aim to establish a sustainable society in harmony with nature. Let us step forward to realize a society full of nature, living creatures, and lively children.



IV What is biodiversity?

1 Blessings of nature bestowed by “biodiversity”

Biodiversity is the term given to the variety and variability of life on earth within and between all species of plants, animals, micro-organisms and the ecosystems within which they live and interact. Our lives comprise biodiversity and blessing of nature bestowed by biodiversity (ecosystem services). Thanks to the variety of life on earth, humans assimilate with a land and living organisms and we receive food, clothing, houses and medicines. Forests absorb carbon to protect us from flood. Fruits are ripened by pollinators and earthworms fertilize the soil. In this way, living organisms on earth directly or indirectly interact with one another.

2 Threats to “biodiversity”

Pursuing too much profit increases the risk of threats to biodiversity. If loss of biodiversity is deteriorated, the balance of natural environment will also be destroyed, which disables us to live on. The main causes are as follows;
1. Overexploitation; 2. Habitat destruction; 3. Invasion of alien species; 4. Climate change; 5. Pollution.
In order to change such critical situation, Convention of Biological Diversity (Conference of the Parties; CBD/CDP) was established in 1992.

3 What is the Aichi Biodiversity Targets?

Some 180 countries acceded to the Convention of Biological Diversity at COP10 held in Nagoya, in Aichi Prefecture in 2010. It aims for creating a society in harmony with nature by 2050, and sets 20 targets which should be achieved by 2020. This serves as a direction for protecting biodiversity for the next 10 years.

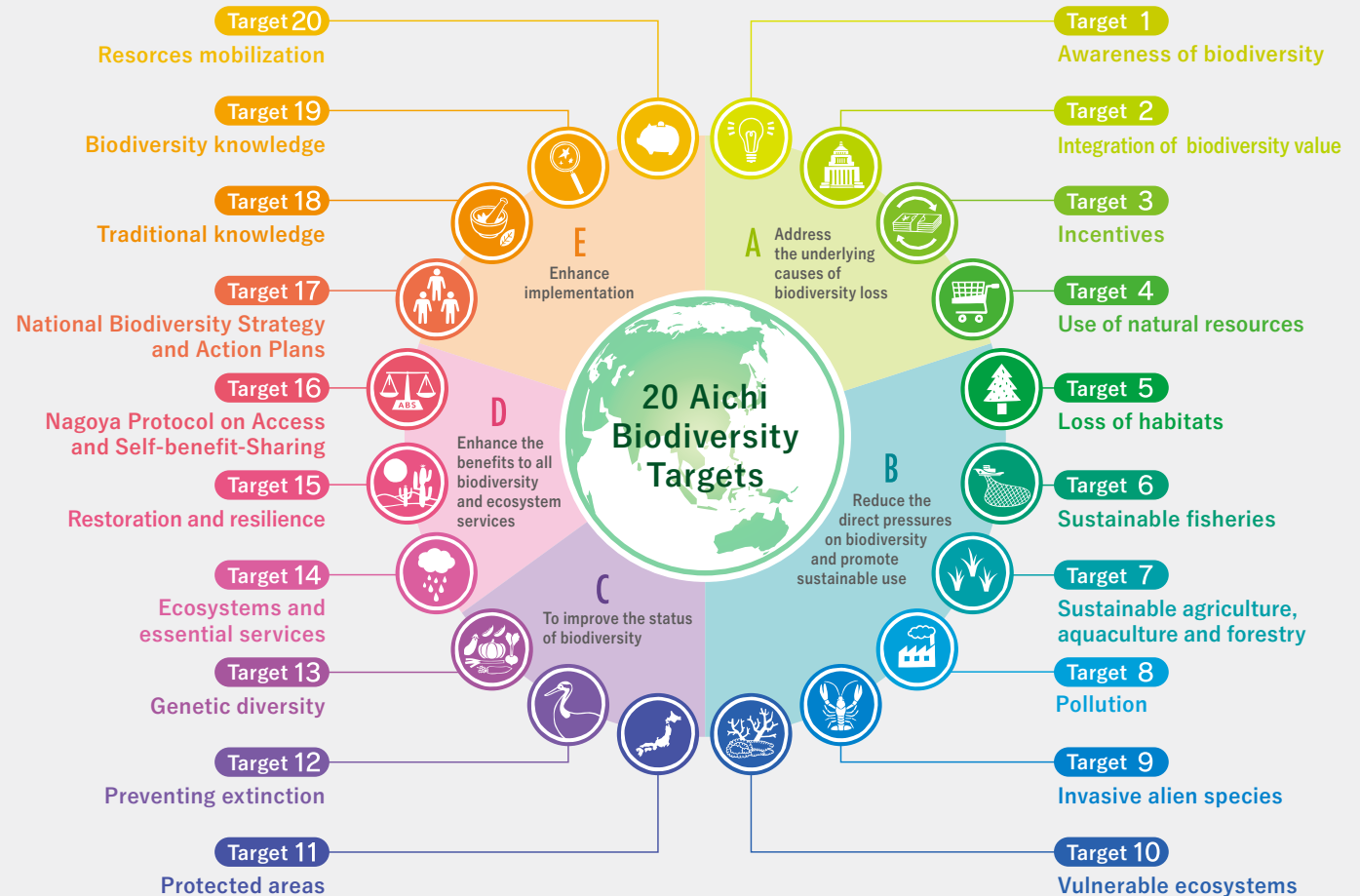


Relationship between the “Aichi Biodiversity Targets” and All-Toyota Green Wave Project

Definition of the activity: Activities that contribute to restoration and enhancement of biodiversity and ecosystems

Especially, we will implement activities with a focus on 10 out of 20 items of the “Aichi Biodiversity Targets”, which are related to Challenge 6.

Targets related to Toyota Green Wave Project: 1, 5, 7, 9, 10, 11, 12, 14, 15, 19
(Others: Targets related to automobile industry: 2, 4, 8)



V Activity guidance on All-Toyota Green Wave Project

1. Objectives of this activity

- Activities that contribute to restoration and enhancement of biodiversity and ecosystems (clean-up or trash picking are not included.)
- Activities that contribute to direct involvement of biodiversity and actions to expand and connect with other activities should be included. (e.g. Collaborative projects with communities, government, and other companies, technologies to promote activities, KPI development)

2. Scope of the activity

- As aforementioned, it is not limited to particular living organisms.
- In ecosystem, we implement not only forestry activities but also grassland or waterfront activities that meet the regional characteristics.

3. Participating company (23 companies in All-Toyota working group)

Aichi Steel Corporation, Aisin Industry Co., Ltd., Aisin AI Co., Ltd., Aisin AW Co., Ltd., Aisin Seiki Co., Ltd., Aisin Takaoka Co., Ltd., Daihatsu Motor Co., Ltd., Denso Corporation, Gifu Auto Body Co., Ltd., Hino Motors Ltd., JTEKT Corporation, Sango Co., Ltd., Toyota Auto Body Co., Ltd., Toyota Boshoku Corporation, Toyota Central R&D Labs., Inc., Toyoda Gosei Co., Ltd., Toyota Industries Corporation, Toyota Motor Corporation, Toyota Motor East Japan Inc., Toyota Motor Hokkaido Inc., Toyota Motor Kyushu Inc., Tokai Rika Co., Ltd., Toyota Tsusho Corporation [Alphabetical order]



Aisin Group

Aisin Seiki Co., Ltd., Aisin AW Co., Ltd.,
Aisin Takaoka Co., Ltd., Aisin AI Co., Ltd., etc.

Target Nos. 1, 5, 9, 10, 11, and 12

Activities to Promote Communication in Water Environments

The Aisin Group uses a large amount of water resources in its production activities. We therefore promote communication activities in water environments, such as wetlands, ponds and rivers, thereby contributing to the local communities. At the same time, these activities provide us with opportunities to learn from local ecosystems about how they are related to our daily lives and business operations.



Biodiversity Conservation Concepts

- ① Prevention and minimization of negative impact on biodiversity
- ② Implementation of proactive environmental communication
- ③ Cross-group development of regional symbiotic activities that contribute to biodiversity

Continuing these activities year after year to expand to other regions

Sixth Environmental Action Plan (2016–2020)

Following the Fifth Plan, activities are launched accordingly in regions where Aisin Group companies are located in Japan.
⇒ To be established as part of daily operations

	Mikawa	Hokuriku	Kyushu	Hokkaido	Tohoku
2011-2013	Implement	Implement	Implement	Implement	Implement
2014	Continue	Continue	Continue	Continue	Continue
2015	Continue	Continue	Continue	Continue	Continue
2016	Continue	Continue	Continue	Continue	Continue
2017	Continue	Continue	Continue	Continue	Continue
2018	Continue	Continue	Continue	Continue	Continue
2019	Continue	Continue	Continue	Continue	Continue
2020	Continue	Continue	Continue	Continue	Continue



Marsh conservation activities (Fukui Prefecture)



Weeding after seeds of rare species have fallen (Kumamoto Prefecture)

Aisin Seiki Co., Ltd.

Target Nos. 1, 5, and 12

Aisin Ecotope

To harmonize with the local community, Aisin Seiki has established an area that is similar to the surrounding at its plant premises. The area serves as an oasis for indigenous species. Inhabitation of 98 animal species and 173 plant species have been confirmed in approximately 3,000 m² of the biotope.



Feature 1

Plant indigenous tree species in the Chita Peninsula to promote harmony with the local environment.

Feature 2



Grow and preserve a rare fish "golden venus chub" in collaboration with a local aquarium.

Feature 3

Conduct hands-on research by catching organisms led by employees and provide opportunities to learn about biodiversity.

Feature 4

Monitor the impact on production activities through regular ecosystem surveys by experts.



Aisan Industry Co., Ltd.

Target Nos. 1 and 5

Development of a Green Plant

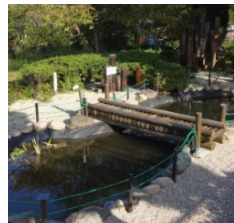
The Anjo Plant of Aisan Industry is aiming to develop an environment-friendly plant full of greenery. Tree-planting activities led by employees initiated around 1990, and we have been promoting afforestation activities with a focus on planting of broadleaf evergreen trees. The green area of the plant is partly open to local residents.



Green area located in the southwest of the plant

Waterfront Using Industrial Wastewater

In 2015, we created a waterfront area using discharged water from the wastewater treatment facility adjacent to the company. This area is stocked with local fish species. We work to ensure that wastewater is properly treated to be friendly to other life forms without environmental impact.



Waterfront using discharged water from a plant

Communication with the Local Community

We invite local residents, including elementary school students to our company to explain about our environmental activities and wastewater treatment status. We aim to create a plant that can be friendly to the people in the local community.



Environmental education for local elementary schoolchildren

Aichi Steel Corporation

Target Nos. 1, 5, 7, and 19

Volunteer Activities for Forest Enhancement

Aichi Steel has called for volunteers from employees and their families to work together with an NPO. Twice a year, these volunteers enhance forests in Kiso Village and Otaki Village in Nagano Prefecture. This region is home to the headwaters for Aichi water, which is used by the Chita, Forging and Higashiura Plants of the company. To preserve such precious headwaters, we have been continuing our activities since 2005. Participants realize the importance of forests, while cutting and thinning forests in a refreshing natural environment. They also deepen the interaction with local residents.



Afforestation to Create a Forest for Beetles

We have set a goal to create a forest where beetles can live in the future in the Nakashinden green area (Tokai City), covering about 20,000 m² within our company premises. To this end, in 2013, our employees, their families and others concerned planted ca.1,200 trees.



Since then, in collaboration with Chita Eco Network Council and members of the students execution committee in the NPO, we invite employees of the Aichi Steel Group and their families, and hold various events annually such as environmental education, gathering acorns, the nurturing and planting of seedlings, and seminars on how to take care of trees. Through these activities, we help deepen their understanding of harmony with nature and biodiversity.



Gifu Auto Body Co., Ltd.

Target Nos. 1 and 5

Forest Conservation through Corporate Afforestation Activities

In May 2010, Gifu Auto Body made an agreement with Shirakawa Town and Gifu Prefecture on a collaborative afforestation project with an aim to promote afforestation such as the conservation of forest resources and satoyama, and social contribution and interaction with local communities. We have named a 4.7 ha greenbelt in Shirakawa Town "Gifu Auto Body Park," and the participants "Y2 Green Supporters." They implement forest enhancement activities about three times a year. Last year, the agreement was extended for another five years, and the second phase of the initiatives began. Through these forest conservation efforts, we will continue to contribute to the protection of water sources and the prevention of global warming. At the same time, we will remain committed to our "lively*" activities to make this Park oasis for employees.

* Quoted from the basic philosophy of Gifu Auto Body, "A highly unique and lively company that creates excitement."



Members of the Y2 Green Supporters



Planting shiitake mushroom spores



Preparing hoba sushi for lunch

Sango Co., Ltd.

Target Nos. 1 and 5

Sango Tree-Planting

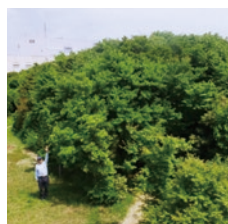
The Sango Tree-Planting activities started in 2006 at ECO 35, located in Atsuta Ward of Nagoya City. Sango employees closely work together with local residents to research on indigenous tree species, to promote tree-planting activities. Our efforts also involve conducting ecological studies and keeping fireflies. The Sango Group rolls out tree-planting activities at its production sites around the world.

Rice-Growing Experience as Part of Education for Sustainable Development

For children living in urban areas in Nagoya City, Sango offers opportunities for hands-on rice-growing experience consistently from planting out rice seedlings to harvesting rice and making goheimochi rice cakes with harvested rice. Through tree-planting and rice-growing activities, Sango supports human resources development to foster children who will play leading roles in the future.



ECO 35 tree-planting ceremony in November 2006



Woodlands of ECO 35 in May 2015



Plant out rice seedlings by local elementary schoolchildren in May



Rice-harvesting with scissors in September

JTEKT Corporation

Target Nos. 5, 7, and 15

Participation in the Tokushima Cooperative Forestry Project

In 2011, the Tokushima Plant of JTEKT entered into a partnership with Tokushima Prefecture and the Tokushima Forestation Promotion Organization to participate in the afforestation project.

Contribution to Biodiversity Conservation

In forests that remain untended due to geographical disadvantages or other reasons, JTEKT works to realize healthy forest conditions by thinning, cutting and planting trees, thereby helping to conserve biodiversity. We are also contributing to climate change mitigation by carbon offsetting certified by Tokushima Prefecture.

Tree Planting

We maintain ecosystems by planting seedlings of the same species as those of the trees that have been cut down. We also contribute to help maintain the disaster-prevention forests.



Tokushima Cooperative Forestry Project in 2015



Tree planting

Daihatsu Motor Co., Ltd.

Target No. 9

Efforts to Protect the Ecosystem of the Ina River

In collaboration with a local NPO, volunteer members from Daihatsu work to exterminate an alien plant "Brazilian vervain" from the dry riverbed of the Ina River that runs to the west of Ikeda Plant in the Headquarters.

Aiming to Restore the Original Landscape of the Ina River Regenerating Amur Silver-grass

Originally, the riverbed of the Ina River used to be covered with an indigenous plant, "amur silver-grass". In recent years, however, this plant has disappeared from the riverbed since its growth has been hindered by alien species.

In order to restore the amur silver-grass, volunteers from Daihatsu initiated activities to pull out the alien species, Brazilian vervain in 2012. Currently, its population has drastically dropped in the area thanks to the volunteers' efforts. The steady activities of these volunteers contribute to the restoration of amur silver-grass.



Employees pull out Brazilian vervain



Denso Corporation

Target Nos. 1, 5, 10, and 12

Biotope—Restoration of a Natural Forest with Many Groves

Denso built a biotope covering 3,300 m² areas at its Zenmyo Plant in 1998. The biotope creates an attractive environment just like a *satoyama* and an agricultural village, where people can be familiar with nature. The biotope is also loved by residents of the local community.

Contribution to Biodiversity

The biotope of the Denso Zenmyo Plant was aimed to restore a *satoyama*, by using the power of nature without using too many artificial elements. *Pseudorasbora pumila* subsp., is an endangered species of freshwater cyprinid fish that was discovered in a reservoir in Zenmyo-cho, and conserved under the care of experts. One of the objectives of building the biotope was to return the offspring of the *Pseudorasbora pumila* subsp. bred in other locations to their habitat, Zenmyo.

We have also confirmed Japanese killifish, over five species of aquatic insects, over 20 species of dragonflies, and over 10 species of butterflies in this biotope. In addition, many wild birds are flying to this biotope. In this way, Denso contributes to the restoration of rich ecosystems, where a variety of birds, fish, insects and plants live in harmony.



Biotope



Pseudorasbora pumila subsp. that returned to their habitat with the help of Hekinan Seaside Aquarium

Tokai Rika Co., Ltd.

Target Nos. 1, 5, 15, and 19

Encouraging Biodiversity Conservation through Tree Planting

Tokai Rika promotes factory greening by planting nursery trees of species that naturally grow in the surrounding areas. Our efforts are based on the concept that "create greenery that comforts employees and foster eco-minded employees by tree-planting."

Tree Planting

Since 2014, a total of five tree-planting events have been held at the Head Office and the Otowa Plant. Some 500 employees and their families have participated, and planted 7,000 seedlings of 30 species. These nursery trees, which were initially some 30 cm in height, have now grown to be 2–3 m in the green area, which is also visited by brown-eared bulbuls and Dusky thrushes.



Tree-planting by employees



Growing trees in the green area at Head Office

Environmental Education

In addition to tree-planting events, we hold environmental education programs to help participants deepen their environmental knowledge. These programs include a quiz game and panel exhibitions on biodiversity, providing employees and children with opportunities to learn environment.



Environmental education for children



Panels exhibition

Toyoda Gosei Co., Ltd.

Target Nos. 1, 5, and 12

Let's Plant Trees Together!

We have been continuing Toyoda Gosei's Woodland Restoration Project both in Japan and abroad involving employees of the Toyoda Gosei Group, their families and other community members with an aim to share respect for nature and greenery, and act together to protect them.

Woodland Restoration Project

In commemoration of the 60th anniversary of the foundation of the company in 2009, we began a tree-planting project at the Heiwamachi Plant, under the tutelage of Dr. Akira Miyawaki, a renowned advocate of forest restoration by using native trees. The project has expanded its scope not only across Japan but also overseas, with the number of trees planted reaching approximately 270,000. Now trees in our woodlands are over 4 m in height; when we planted the potted seedlings, they were only 20-30 cm or so. Our woodlands are growing as forests of life, while providing habitats for various species.

Contribution to Biodiversity

As part of our new initiatives, we built a biotope within the premises of the Miwa Technical Center in April 2015. In the biotope created adjacent to the factory woodland, we release and breed fireflies and Japanese killifish, which are indigenous species in the past. Also, damselflies can be seen in our biotope. We expect to see a further increase in the number of species of living organisms in this biotope.



Factory woodland in November 2009



May 2015



Biotope of Toyota Gosei

Toyota Motor Kyushu Inc.

Target Nos. 1 and 5

Project to Plant One Million Trees in the Environmental Capital, Promoted by the Environmental Model City of Kitakyushu

In 2011, Toyota Motor Kyushu (TMK) worked in collaboration with Kitakyushu City to implement a tree-planting event at Green Park in the Kitakyushu Rinku Industrial Complex, inviting the Mayor of Kitakyushu and citizens of the local communities. This event was organized in the hope of leading to protect the local environment and enhance regional disaster-prevention capabilities.

From TMK, 400 people took part in the tree-planting event with an aim to strengthen employees' attachment to the surrounding communities, and raise their awareness of environmental conservation. A total of 800 participants enjoyed planting 7,000 trees. TMK received a letter of appreciation from the Mayor of Kitakyushu for donating seedlings to the city.



Toyota Motor East Japan Inc.

Target Nos. 1, 5 and 12

Participation in the Tree-Planting Event on the Millennium Hope Hill in Miyagi Prefecture

In order to provide reconstruction assistance to the Tohoku region, Toyota Motor East Japan has been involved in various volunteer activities in Miyagi and Iwate Prefectures. As part of such efforts, the company joined the 2015 Tree-Planting Event on the Millennium Hope Hill, held in Iwanuma City, Miyagi Prefecture. This event was organized under a reconstruction project with an aim to construct hills using earthquake debris in the coastal area where Japanese black pine trees used to be planted for tidal prevention before the earthquake disaster, and then plant trees there to reduce and disperse the force of tsunamis. Participants from our company planted approximately 1,000 trees, including oak seedlings produced in Miyagi Prefecture and raised by children in Aichi Prefecture.



Toyota Motor Hokkaido Inc.

Target Nos. 1, 5, and 15

Greening Our Plant toward Harmony with the Local Community

Ever since Toyota Motor Hokkaido started business in 1992, the company has worked on tree planting at its plant site, aiming to harmony with people and the natural environment of the local community.

Forest of Toyota

In 2004, we created the Forest of Toyota at the site of our plant. It serves as an oasis for employees, also offers a rest spot for people visiting Toyota Motor Hokkaido for plant tours.



Forest of Toyota in summer



Forest of Toyota in winter

Tree-Planting Activities

Our company has held tree-planting events with the participation of employees and their families. Under the guidance of experts, so far they have planted a total of 30,000 nursery trees of indigenous *Quercus serrata* and *Quercus crispula*. In recent years, we have grown a row of Yoshino cherry trees so that people can enjoy viewing them.



Tree-planting event



Yoshino cherry blossoms on the company premises

Toyota Industries Corporation

Target Nos. 1, 5, and 9

A Garden Showcasing Local Native Species <Biotope to the East of Obu Station>

In September 2012, Toyota Industries created a biotope covering an area of some 1,100 m² on its idle land in Obu City, Aichi Prefecture, which is accessible to everyone to enjoy nature in the community at any time.

Concept

In collaboration with a project of Aichi Prefecture promoting the development of ecological networks, we have designed the biotope so that it could expand green areas in the surrounding areas with waterways and become a habitat for various living organisms.

Biotope in the Town

This biotope is located in front of a station where people can enjoy firsthand nature and native flora and fauna. Moreover, this biotope is open to local residents, functioning as a venue for children's events and an oasis for everyone.



Biotope map



People observing organisms

Toyota Auto Body Co., Ltd.

Target Nos. 1, 5, and 12

Kariya Fure-Ai Park

The Kariya Fure-Ai Park features a biotope (of approximately 5,000 m²) that provides habitats for various organisms, including endangered indigenous species. The biotope was created as a place where anybody can easily learn about how to live in harmony with nature. Local residents, schools and employees of Toyota Auto Body use this biotope as a hub for expanding the ecosystem network and as a place for environmental education.



Biotope at the Kariya Fure-Ai Park

Contribution to Biodiversity

The biotope was created considering the surrounding water environments, including paddy fields stretching in the northern part of Kariya, and reservoirs scattered various places. Toyota Auto Body implements tree-planting events working with local residents, schools and employees of the company. In addition, we nurture diverse natural habitats for many life forms, including streams, wetlands, dry fields, orchards and paddy fields.



Plant observation/study event



Tree-planting event

Environmental Education

We hold environmental study programs using this biotope through collaboration between government and academia. The contents range widely from manufacturing to nature observations ensuring that even children can enjoy learning.

Toyota Central R&D Labs., Inc.

Target Nos. 1, 5, and 15

Afforestation Activities by Employees and Their Families Outlooking for 20 Years

Tree Planting

To celebrate the 50th anniversary of its foundation, Toyota Central R&D Labs held a tree-planting event on the company premises in 2010. For the event, we selected 1,400 seedlings of 50 different kinds, primarily of oak, castanopsis and camphor species in reference to a neighboring shrine forest where trees have densely grown assimilating the environment of the Nagakute district. Potted seedlings of the selected species were planted by about 500 employees and their families were only 20-30 cm high at that time, and they have now grown to 4-5 m.

As a result of land readjustment in the surrounding area, green areas outside our company premises have changed significantly. Nevertheless, we will continue our efforts to maintain and protect about 13,000 trees planted at our company premises to provide a "green mass" in the region, and to promote proactive greening activities.



Changes in the surrounding environment in 1993 and 2015



Tree planting in 2010



Trees growing (trees in the front side)

Toyota Tsusho Corporation

Target Nos. 1 and 5

Toyota Tsusho believes that conservation of the global environment is a basis of establishing an affluent society. Based on this principle, we are striving to maintain and conserve biodiversity and ecosystems through our contribution to community activities.

Fujimae Tidal Flat Cleanup Campaign

Since 2013, we have participated in the Fujimae Tidal Flat cleanup campaign (in Nagoya City, Aichi Prefecture) led by the NPO Fujimae Wetland Conservation Society. The Fujimae Tidal Flat is located on the southern tip of Nagoya Port at the northern end of Ise Bay. This vast tidal flat has been registered under the Ramsar Convention (The Convention on Wetlands of International Importance especially as a Waterfowl Habitat). A large amount of illegally dumped waste, PET bottles, empty cans, and plastic bags flow down from the upstream of rivers. These drifting items are washed ashore and accumulate on this tidal flat, threatening water birds and ecosystems there. Participants of the cleanup campaign collect such waste to help conserve the environment of the tidal flat.

Coastal Restoration Project on Kujukurihama Beach

The coastal forests on Kujukurihama Beach in Chiba Prefecture were also severely damaged by the tsunami caused by the Great East Japan Earthquake. The Chiba prefectural government and an NPO, the Lifestyle Research Institute of Forests, organized the Coastal Restoration Project on Kujukurihama Beach, to restore the disaster-hit coastal forests. The Toyota Tsusho Group companies have participated in this project as part of its efforts to promote environmental protection and provide reconstruction support. At the end of October 2015, an area of 0.1 ha out of 1.6 ha of the damaged forests untended area, volunteers from our Group companies cut dead or damaged trees, rake the land to prepare for tree planting. In February 2016, they planted 1,500 black pine seedlings. In the next five years, we will weed in the tree-planting areas once a year to promote restoration efforts, thereby helping protect and grow coastal forests.



Toyota Boshoku Corporation

Target Nos. 1, 5, and 12

Toyota Boshoku Group's "Eco-Forest" Initiative

In 2006, the Toyota Boshoku Group companies started the "Eco-Forest" initiative as part of its CSR activities. The said companies, local communities and NGOs have been working together to promote tree planting, forest maintenance, and environmental education through afforestation activities, with the aim of conserving forests and other natural environments.

Features

With a focus on "tree planting," "forest maintenance" and "contribution to the community/community interaction," we implement afforestation activities according to the conditions of local area.

Tree Planting

We strive to plant indigenous species. The cumulative number of trees we have planted globally has reached 330,000.

Contribution to Biodiversity

Through afforestation and forest conservation, we have created an environment where various species can easily settle and nurture.



Kashimo, Gifu Prefecture



Ala Shan Desert, Inner Mongolia, China



Mt. Bromo, Indonesia



Suburbs of Sakarya, Turkey

Hino Motors Ltd.

Target Nos. 1, 5, 9, 12, 15, and 19

Biodiversity Conservation Efforts with Local Communities and Employees

Hino Motors provides its employees and local residents with opportunities to learn about biodiversity through hands-on experience.

Aquatic Life Study Trip for Children

The Koga Plant of Hino Motors has organized an annual environmental study trip for children since 2013, on the river running near the plant. While many endangered species, such as killifish and Tokyo Daruma pond frogs were confirmed, alien species, such as red swamp crayfish and American bullfrogs were also be found. We contribute to biodiversity conservation by exterminating these alien species. At the same time, we offer children the opportunity to consider the ecosystems in their local community through this study trip.



(Top right) Tokyo Daruma pond frog: an endangered species
(Bottom right) Red swamp crayfish: an alien species

Participative Tree-Planting Event for Employees

Since 2012, Hino Motors has held a tree-planting event for employees and their families at a forest named the 70th anniversary of Hino Motors foundation, located in Ome City. During this event, participants not only plant seedlings but also have an opportunity to learn about the importance of forests through lectures offered by experts. Going forward, Hino Motors will continue its tree-planting activities, aiming to grow a lush forest that serves as a habitat for various life forms.



Toyota Motor Corporation

Target Nos. 1, 5, 7, 10, 11, 14, 15, and 19

"Forest of Toyota" and Ecosystem Conservation Activities in Tune with Communities

In 2008, Toyota Motor Corporation started afforestation activities at its production plants with the aim of establishing "a plant that fully utilizes natural resources and harmonizing with the nature." Apart from our plant sites, we promote ecosystem conservation in the surroundings in collaboration with local NPOs. We will expand such activities to connect rich natural environment with local communities by realization of growth of our forests and biotopes and increase the number of incoming indigenous species and aquatic organisms.

Collaborative activities with employees of Toyota's affiliates, communities, and various organizations

Approximately 8.6 million trees were globally planted in total (including 855,000 from tree-planting activities)

Afforestation Activity at the Tsutsumi Plant

Under the slogan "Let us make the Toyota Tsutsumi Plant rich in trees!" A total of 5,000 people including employees, their families and local residents planted 50,000 trees in 2008. This activity is ongoing with the aim of planting 100,000 trees by 2020.

**Feature**

Considering biodiversity, employees started research on the indigenous tree species, enriched the soil, and grew saplings from seeds.

Forest Conservation

Each Division designates a conservation area, and employees regularly pull out weeds, take care of fallen trees, and collect rubbish or dead leaves

Effects of Our Forest and Biotope

Tree-growing efforts by employees have resulted in a richer forest and flying rare bird species.



Tree-planting ceremony at the Tsutsumi Plant

Ashy Minivet
Vulnerable species (VU)

As of February 2016

Message ~ Messages from Experts ~

Cross-sectional cooperation is indispensable for preventing the fragmentation of habitats.

I welcome the first step of the All-Toyota activities to connect green areas.



In advancing biodiversity conservation efforts, preventing the fragmentation of habitats is an important issue, not only for tropical rainforests but also for urban green areas. Its importance is reflected in the fact that fragmentation prevention is suggested in the Aichi Biodiversity Targets in the Convention on Biological Diversity to be achieved by 2020, as well as in the City Biodiversity Index (CBI) focused on cities.

To prevent the fragmentation of habitats in globally and domestically, cross-sectional cooperation is indispensable. I would therefore like to welcome the first step of the All-Toyota initiative to connect fragmented green areas to make green corridors, beyond the boundaries of companies. Also, I expect that the Toyota Group's move will have positive ripple effects on other industries and various countries around the world. In keeping with the spirit of Kaizen, one of its core values, Toyota will continue its steady progress. To this end, I believe that Toyota can make leap forward by setting numerical targets in the future to specifically indicate what should be accomplished, to what extent, and by when, just like the Aichi Biodiversity Targets.

Ryo Kohsaka Associate Professor at Kanazawa University [Graduate School of Human and Socio-Environment Studies]

Ryo Kohsaka is an Associate Professor at Kanazawa University. After graduating from the Faculty of Agriculture, University of Tokyo, he studied at the Faculty of Forestry Economics of the University of Freiburg in Germany, where he earned a PhD (in science). He worked for the Secretariat of the Convention on Biological Diversity of the United Nations Environment Programme (UNEP), and for Nagoya City University. Then he assumed the current position. He also served as an Advisor to the Aichi-Nagoya COP 10 CBD Promotion Committee between 2008 and 2010. His recent publications include Chiki Saisei (Regenerating Rural Areas in Japan) and Seibutsu Tayosei to Watashitachi (Biodiversity and Our Life) published by Iwanami Shoten.

I would like to show my sincere respect for Toyota's grand tree-planting project.

I myself am very excited to be able to participate in this project.



In my capacity as a representative of an environmental NGO, I am truly delighted to be able to participate in the Green Wave Project, one of Toyota's three projects aimed at establishing a future society in harmony with nature.

Since everyone can join the tree-planting activities and their effects are visible, various companies and organizations implement such activities. I would like to show my sincere respect for the commencement of the grand tree-planting project, which expands activities from communities to the global scale and passes them on to the future generations in collaboration with All-Toyota group companies. I am also very excited to be able to work as a member of the project.

It is a great achievement to note the fact that some 10 million trees have been planted under this All-Toyota project so far. Based on such achievement, Toyota has been demonstrating its leadership in driving the activities to make a greater contribution to biodiversity conservation, involving people all around the world. I expect this leadership can be exercised only by mobilizing the All-Toyota commitment to realize a sustainable society through technologies.

Keiko Suzue Representative Director of BirdLife International Tokyo

Keiko Suzue was engaged in CSR activities, particularly supporting environmental protection, when she worked for a company. Through this experience, she deepened her interest in a wide range of environmental problems, including agricultural issues. Her current position is Representative Director of BirdLife International Tokyo, a regional Secretariat of BirdLife International, a UK-based international environmental NGO. Taking advantage of her global perspective, she strives to implement environmental projects with a view to protecting tropical rainforest, endangered species, and biodiversity.

[Published by] All-Toyota Harmony with Nature Working Group 2

Leader: Aisin Seiki Co., Ltd. / Otani, Owaki

Members: Aisin AW Co., Ltd. / Fujii, Daihatsu Motor Co., Ltd. / Nakadan,

Denso Corporation / Hayashi, Hino Motors Ltd. / Tamura

Toyota Motor Corporation / Oishi, Toyota Tsusho Corporation / Matsuura (Alphabetical order)

[Secretariat] Environmental Affairs Division

Toyota Motor Corporation

[Published] June 2016

