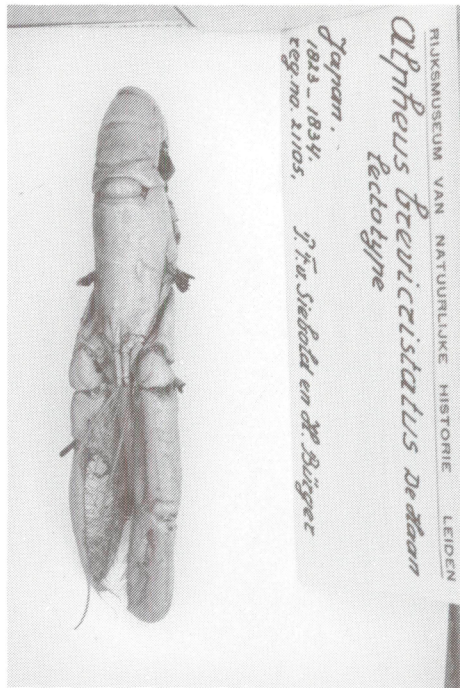
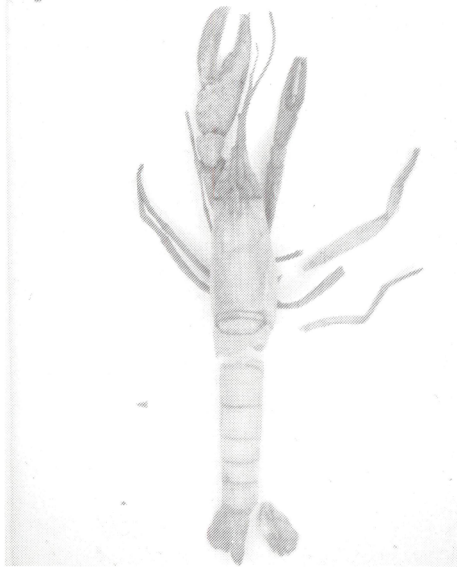


RIJKSMUSEUM VAN NATUURLIJKE HISTORIE LEIDEN

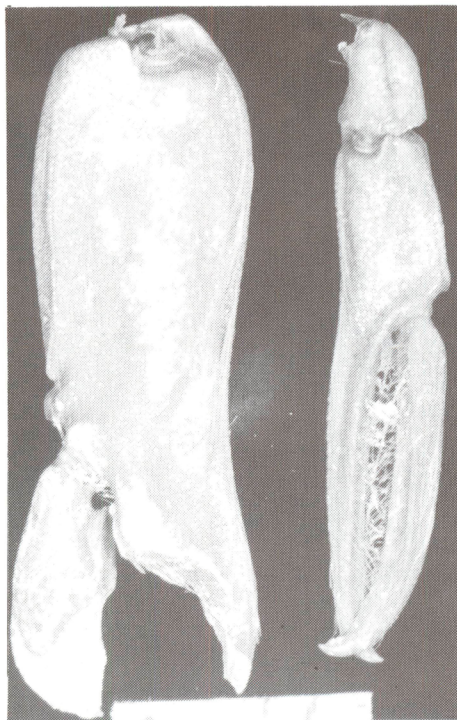
Alpheus digitalis De Haan
holotype

Japan,
1823-1834,
leg. no. 5547, P. Fr. Siebold en Dr. Bürger



RIJKSMUSEUM VAN NATUURLIJKE HISTORIE LEIDEN
Alpheus brevicristatus De Haan
lectotype

Japan,
1823-1834,
leg. no. 2105, P. Fr. Siebold en Dr. Bürger



RIJKSMUSEUM VAN NATUURLIJKE HISTORIE LEIDEN
Alpheus distinguendus De Man
paralectotypes
Japan,
1823-1834,
leg. no. 5531, P. Fr. Siebold en Dr. Bürger

Fig. 6. A (top left), *Alpheus brevicristatus* De Haan, lectotype, Japan (photo. Y. Miya); B (top right), *Alpheus distinguendus* De Man, paralectotypes (=A. *digitalis* De Haan) (photo. Y. Miya); C (bottom left), *Alpheus digitalis* De Haan, holotype, Japan (photo. Y. Miya); D (bottom right), *Alpheus dispar* Randall, holotype, Manila, Philippines, chelae of first pereopods (photo. Y. Miya).

- 28 a. Carpus of second pereopod with second article more than twice as long as first ...
..... *A. platyunguiculatus* Banner
- b. Carpus of second pereopod with first and second articles subequal 29
- 29 a. Rostrum blunt, equilaterally triangular, rostral carina elevated
..... *A. bellulus* Miya and Miyake
- b. Rostrum acute, slender, rostral carina not elevated 30
- 30 a. Rostral carina higher than orbital hood; penultimate segment of third maxilliped with very dense ventrolateral tuft of very long fine setae exceeding tip of terminal segment; major chela with feeble transverse groove proximal to dactylar articulation *A. fenneri* sp. nov.
- b. Rostral carina concealed by orbital hoods laterally; penultimate segment of third maxilliped with tuft of short setae scarcely reaching to tip of terminal segment; major chela with distinct transverse distal palmar groove *A. djeddensis* Coutière

ACKNOWLEDGEMENTS

I am most grateful to Dr F.A. Chace for his helpful comments with regard to *A. macellarius* and *A. fenneri* and other *brevirostris*-related species, and Professor Y. Miya for his detailed advice, particularly his most useful remarks on the key and the colour slides used for figures 5 and 6. Without his expertise the preparation of the key would not have been possible. The approval of the Natural History Museum, Leiden, and the Philadelphia Academy of Natural Sciences, to publish these photographs is also greatly appreciated. Particular thanks is also due to the collectors of the specimens described, Rex Williams and Dr Jack Randall, who also provided the colour photograph of *Alpheus fenneri*.

REFERENCES

Banner, D.M. and Banner, A.H. 1981. Annotated checklist of the alpheid shrimp of the Red Sea and the Gulf of Aden. *Zoologische Verhandelingen, Leiden* **190**: 3-99.

Banner, D.M. and Banner, A.H. 1982. The alpheid shrimp of Australia. Part III: The remaining alpheids, principally the genus *Alpheus*, and the family Ogyrididae. *Records of the Australian Museum* **34**(1): 1-357.

Bruce, A.J. 1988. The shrimp fauna of a small tropical reef, the East Point Fish Reserve, Darwin. In: Larson, H.K., Michie, M.G. and Hanley, J.R. (eds), *Darwin Harbour, Australian National University North Australia Research Unit, Mangrove Monograph* **4**: 226-245.

Chace, F.A. 1988. The caridean shrimps (Crustacea: Decapoda) of the Albatross Philippine Expedition, 1907-1910, Part 5: Family Alpheidae. *Smithsonian Contributions to Zoology* **466**: 1-99.

Fabricius, J.C. 1798. *Supplementum entomologiae systematicae*. Hafnae (Copenhagen). Pp. 1-572.

Haan, W. de. 1833-50. In: von Sibold, P.F. *Fauna Japonica Sive Descriptio Animalium, quae in Itinere per Japonicum, Jussa et Auspiciis Superiorem, qui Summum in India Batavia Imperium Tenet, Suscepto, Annis 1823-1830 Collegit, Notis, Observationibus et Adumbrationibus Illustravit*, i-xxxi, ix-xvi, 1-234. Lugduni - Batavorum (Leiden).

Karplus, I. 1987. The associations between gobiid fishes and burrowing alpheid shrimps. *Oceanography and Marine Biology: Annual Review* **25**: 507-562.

Man, J.G. de. 1908. Diagnoses of new species of macrurous decapod Crustacea from the "Siboga-Expedition". III. *Notes from the Leyden Museum* **30**(14): 98-112.

Man, J.G. de. 1909. Notes sur quelques espèces du genre *Alpheus* Fabr. appartenant au groupe *brevirostris* de M. *Mémoires de la Société zoologique de France* **22**: 146-164.

Man, J.G. de. 1911. The Decapoda of the Siboga Expedition, II: Family Alpheidae. *Siboga Expedition Monograph* **398a**¹: 133-465, supplement (1915).

Miers, E.J. 1876. Descriptions of some new species of Crustacea chiefly from New Zealand. *Annals and Magazine of Natural History* (4)**17**(99): 218-229.

Miya, Y. 1990. Revision of *Alpheus brevirostris* (Olivier, 1811). *Zoological Science* **7**(6): 1184.

Miya, Y. and Miyake, S. 1969. Description of *Alpheus bellulus* sp. nov. associated with gobies from Japan (Crustacea, Decapoda, Alpheidae). *Publications of the Seto Marine Biological Laboratory* **16**(5): 307-314.

Oliver, A.C. 1811. Palaemon. In: Diderot and d'Alembert (premiers) (eds). *Encyclopédie methodique, ou par ordre des matières. Histoire Naturelle*. Insects **8**: 652-667. Chez Pankonshe, Paris.

Rafinesque, C.S. 1815. *Analyse de la Nature ou Tableau de l'Univers et des Corps organisés*. Palermo.

Randall, J.W. 1840. Catalogue of the Crustacea brought by Thomas Nuttall and J.K. Townsend, from the west coast of North America and the

- Sandwich Islands, with descriptions of such species as are apparently new, among which are included several species of different localities, previously existing in the collections of the Academy. *Journal of the Academy of Natural Sciences of Philadelphia* 8: 106-147.
- Yu, S.C. 1935. Sur les crevettes chinoises appartenant au genre *Crangon* (*Alpheus*) avec descriptions de nouvelles espèces. *The Chinese Journal of Zoology* 1: 55-67.
- Yaldwyn, J.C. 1956. A redescription of the type material of *Alpheus novae-zealandiae* Miers, 1876. (Crustacea, Decapoda, Natantia). *Annals and Magazine of Natural History* (12)9: 805-811.

Accepted 17 January 1994