

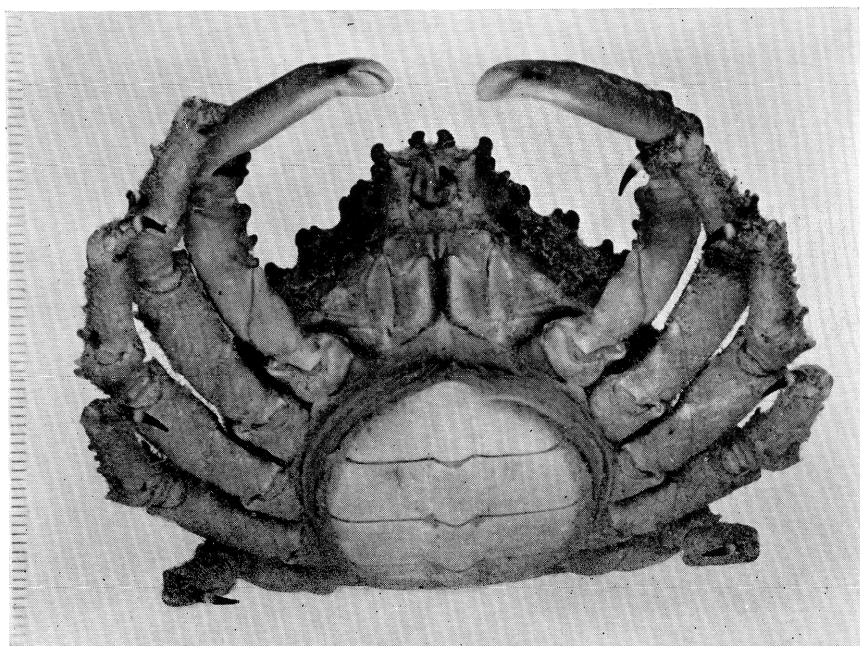
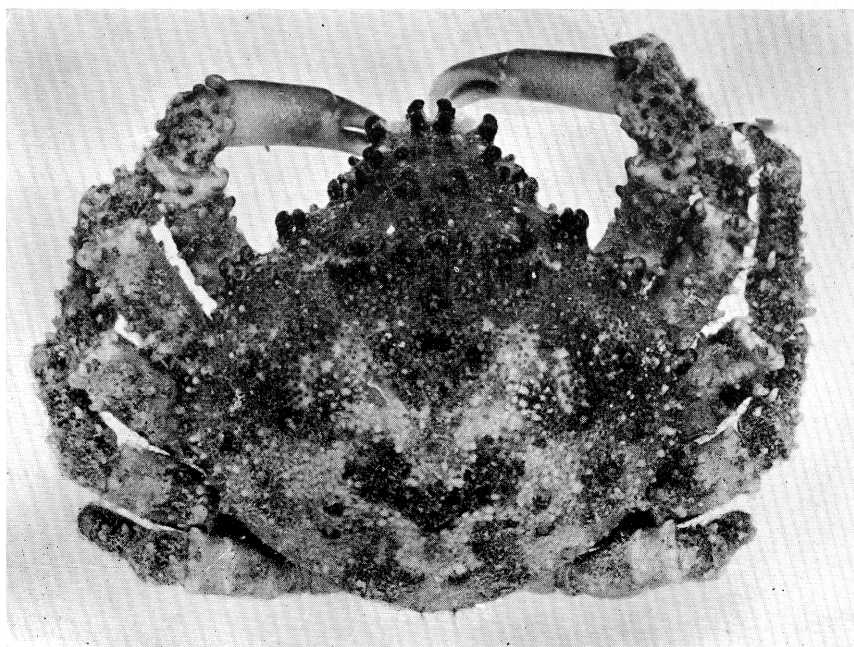
## PLATE 66

*Mithrax (Mithrax) bellii* Gerstaecker (p. 389)

Female

Fig. 1 Dorsal view, x 1.25

Fig. 2 Ventral view, x 1.25



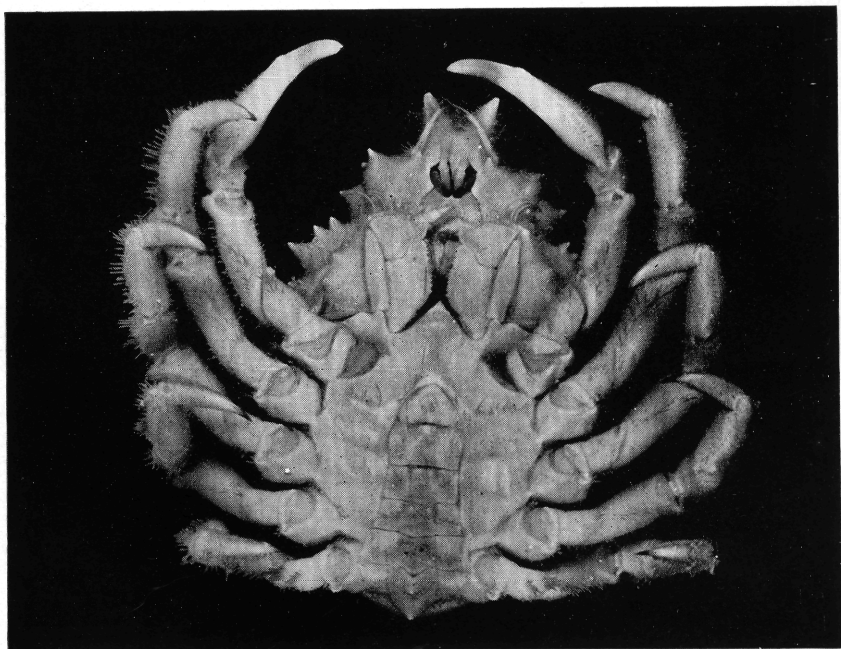
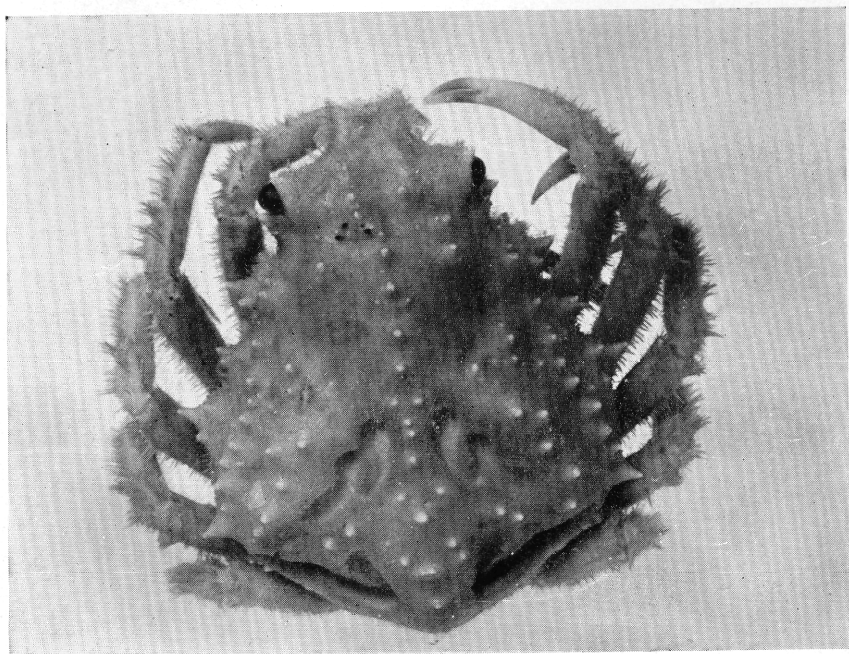
## PLATE 67

*Stenocionops triangulata* (Rathbun) (?) (p. 401)

Male

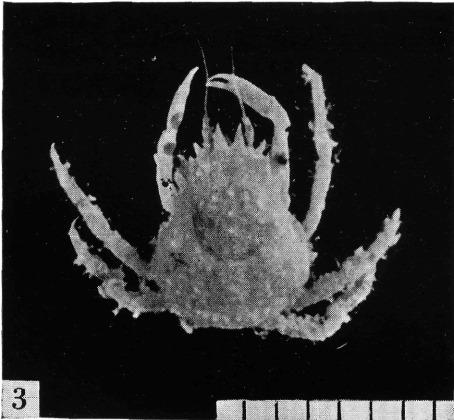
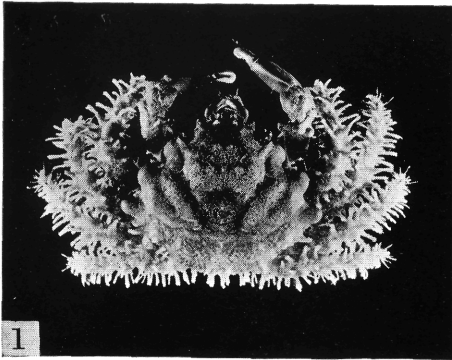
Fig. 1 Dorsal view, x 1.8

Fig. 2 Ventral view, x 1.8



## PLATE 68

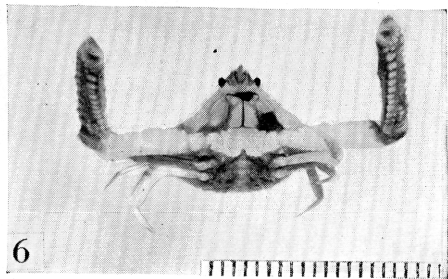
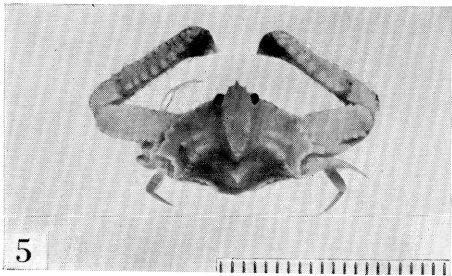
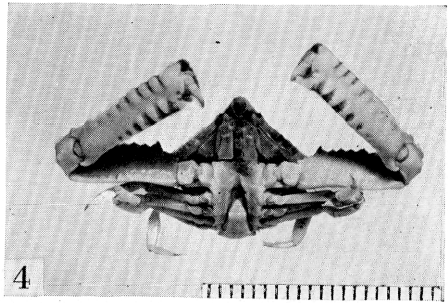
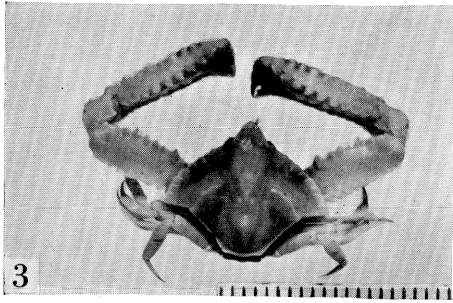
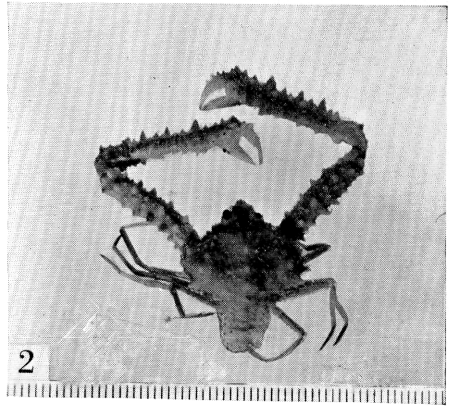
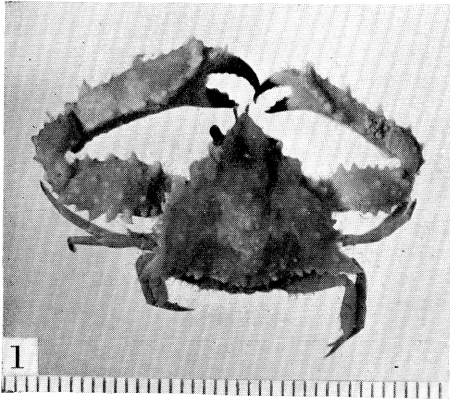
- Fig. 1 *Mithrax (Mithraculus) nodosus* Bell, young, dorsal view (p. 392)  
Fig. 2 *Stenocionops triangulata*, (Rathbun), young male, dorsal view  
(p. 401)  
Fig. 3 *Microphrys platysoma* (Stimpson), young female, dorsal view (p. 405)  
Fig. 4 *Microphrys platysoma* (Stimpson), young female, ventral view  
Fig. 5 *Telephrys cristulipes* Stimpson, male, dorsal view (p. 396)  
Fig. 6 *Telephrys cristulipes* Stimpson, male, ventral view



## PLATE 69

- Fig. 1 *Parthenope (Pseudolambrus) triangula* (Stimpson),  
male, dorsal view (p. 410)
- Fig. 2 *Parthenope (Platylambrus) exilipes* (Rathbun),  
female, dorsal view (p. 409)
- Fig. 3 *Solenolambrus arcuatus* Stimpson, male, dorsal view (p. 413)
- Fig. 4 *Solenolambrus arcuatus* Stimpson, male, ventral view
- Fig. 5 *Mesorhoea bellii* (A. Milne Edwards), male, dorsal view (p. 414)
- Fig. 6 *Mesorhoea bellii* (A. Milne Edwards), male, ventral view





## PLATE 70

*Aethra scruposa scutata* Smith (p. 415)

Female

Fig. 1 Dorsal view, x 1.27

Fig. 2 Ventral view, x 1.27