



Three Pence Beaver

**Selected Re-entries
and
Plate Varieties**

By: Michael D. Smith



Pane A, Position 1

This position is identifiable by the mark in the “P” of POSTAGE and the break in lower right frame line. These are not present on Pane B, Position 1. The top frame line at right is also weak. The wide margins on this copy give further proof of this position. Note the guide dot well above the crown in upper margin and the offset between position 1 and position 11 lower left corner as this does not occur on Pane B.



Pane A, Position 31

There are two scratches in the lower right corner of this position. These are sometimes called cracks but are really tool marks. The mark below the N of PENCE extends into position 41. The fainter line starts above A of POSTAGE cutting through GE and down into the lower margin.



Pane A, Position 33

The main features of this re-entry are a line connecting PE of PENCE at the top of the letters, and a line in the oval band below PE.



Pane A, Position 34

This re-entry shows doubling in some letters in THREE PENCE and the oval bands below. Both bottom 3's are re-entered. The key feature on this re-entry shows two lines under the left 3 indicating three entries were made to the plate at this position, two misplaced and the final entry of the image.



Pane A, Position 47

The “Major Re-entry” is distinguished by the heavy line through EE PEN, lower left and right 3’s doubled at bottom, and a line in inner oval below ADA POST. There are other marks as well.



Pane A, Position 50

“The Weeping Sun” is a flaw dropping from the eye of the Sun. This flaw can vary in size and shape but is very recognizable.



Pane A, Position 69

This position exhibits a very strong dot below the letter C of CANADA.



Pane A, Position 88

Here instead of extra lines we have an absence of color. A short entry or transfer affects the whole right side of the stamp. The design seems to have faded away but actually was never entered into the plate. The stamp is the right stamp in the used pair.



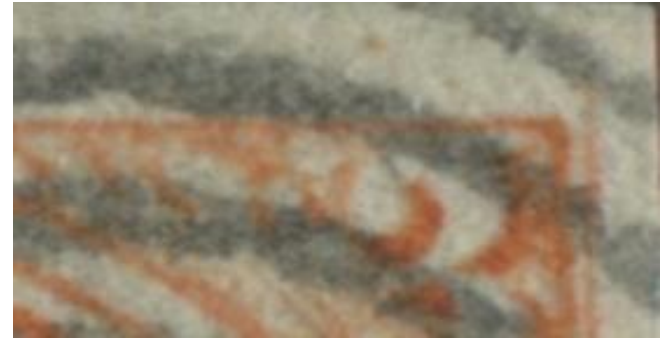
Pane A, Position 91

This re-entry is easily identified by the two marks in the upper left 3. There are dot like markings in DA, the crown, PO, and REE PE. These markings are usually harder to see as they may be faint on some stamps.



Pane A, Position 91

This proof shows detail not present on previous slide especially the doubled lower right frame line which is well clear of the design.



Pane A, Position 95

This is a tough stamp to plate with just two readily identifiable features. The most prominent of the features is the strong guide dot lower right corner. A smaller dot in margin above the top right 3 and top frame line missing in that area help confirm the position.



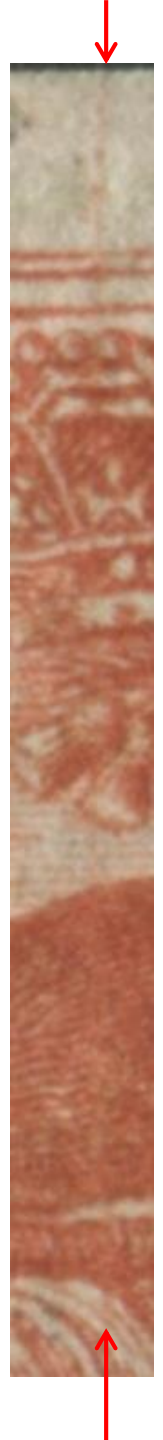
Pane A, Position 100

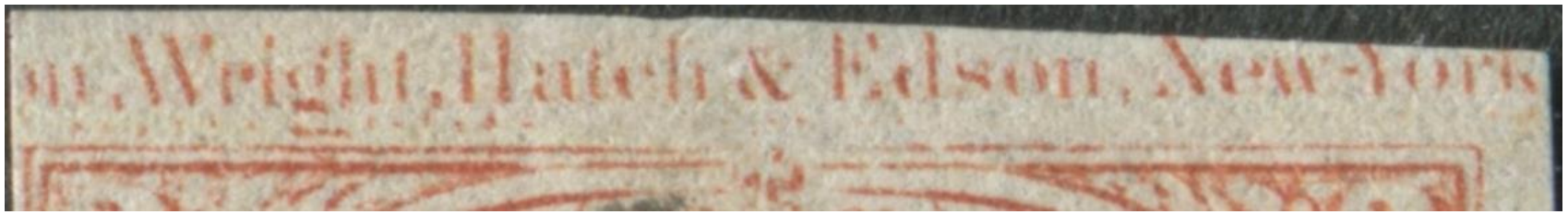
This position is distinguished by the short entry of the left side of the stamp and a very noticeable mark in the back of the "G" of POSTAGE (note on this stamp part of the cancelation extends this mark).



Pane B, Position 3, State 2

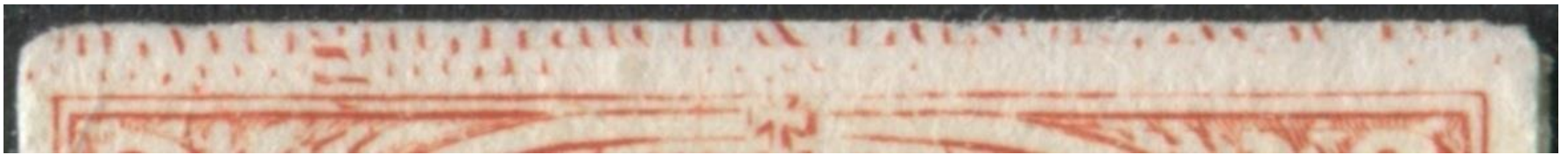
This is the “Sliced Crown and Beaver Flaw” Detail indicates where the flaw is on the stamp. The first state of this position does not show this flaw. The next slide has this flaw and the re-entered imprint.





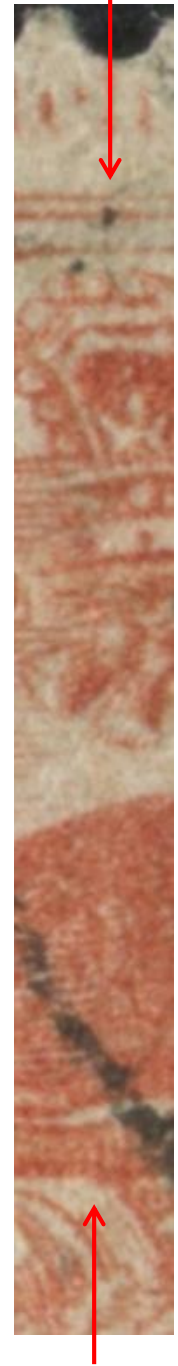
Pane B, Position 3, State 3

It is hard to see the previous flaw, but this stamp shows the re-entered imprint well. Note the “g” of Wright actually doubles into the upper frame lines. Position 2 also shows part of the re-entered imprint. Position 4 will be shown in another slide.



Pane B, Position 3, State 3

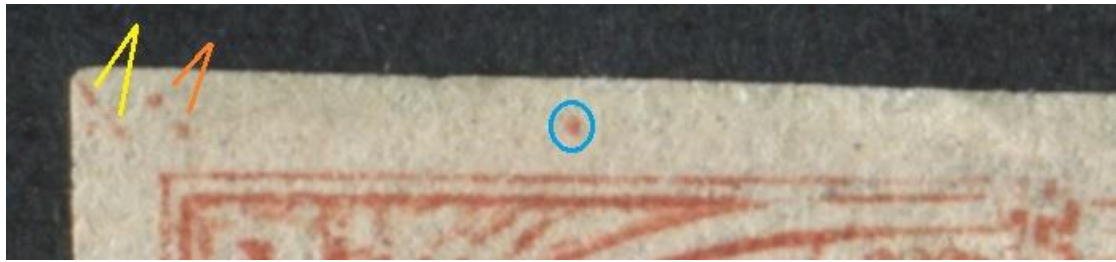
This is a proof of the same state on previous slide clearly showing the re-entered imprint and the “Split Crown and Beaver” flaw are both present on this state of the plate.



Pane B, Position 3, State 4

This is the final state of the “Sliced Crown and Beaver” flaw.

One can see in the detailed image that the tool mark has been retouched as it is shorter and slightly harder to see. The re-entered imprint is still present.



Pane B, Position 4

The upper left corner shows the doubled “k.” of York from the imprint. The “k” is indicated by yellow arrows and the period by orange. The blue circle indicates an imprint guide dot.



Pane B, Position 30

“The Full Stop 3” variety is easily recognized by the strong dot in the lower right corner to the right of the 3.



Pane B, Position 42

Here is a plate proof of this position. There are two outstanding features on this beautiful re-entry. There is an extra vertical line in the lower left corner and the back of the upper right 3 bulges out into the frame lines. There is more doubling in the design mostly on the right side of the stamp.



Pane B, Position 53

This re-entry is called the "V-R" re-entry because of the strong doubling in those letters. There is distinctive doubling above CANADA and in the EE PEN. This copy doesn't show it well but the sun is also doubled. This copy is a ribbed paper copy on folded letter mailed Feb. 5 from Toronto. Receivers mark on reverse Montreal FE 6 1858. Two page letter is intact.



Pane B, Position 61

This is another proof piece and shows the “-York.” of imprint lower left. The imprint and the presence of the doubled 3 are the easy key to plating this one. As can be seen there is much more doubling throughout the stamp.



Pane B, Position 65

When visible the marks in EE PEN are the best reference for this position. All four 3's, DA, around the crown and POST show signs of re-entry.

Conclusion :

These are just a few of the many plate varieties present on the Three Pence Beaver stamps. With a great deal of study it is possible to plate every position on the plates.

References:

Volumes 1-5 of *THE THREE PENNY BEAVER*, Kenneth A. Kershaw, Privately Printed.

Ralph Trimble's web site: www.re-entries.com

Scott Robinson's web site: www.flyspecker.com