

从这里开始

Start Here

1

使用 **USB** 电缆的用户：除非本指南中指出可以连接 **USB** 电缆，否则不要使用这类电缆，以免无法正确安装软件。

请根据本指南中的说明来安装硬件，并将 HP All-in-One 连接到计算机或网络上。如果在安装期间遇到问题，请参阅最后一节中的**疑难排解**。

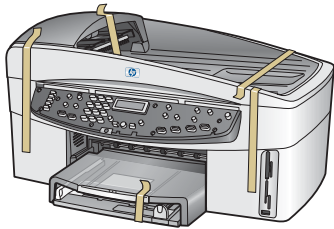
USB cable users: Do not connect the USB cable until this guide instructs you to or the software may not install properly.

Use this guide to set up the hardware and connect the HP All-in-One to either your computer or network. If you have problems during setup, see **Troubleshooting** in the last section.

2

取下所有的胶带

Remove all tape



有关组网所需的其它设备将在本指南后面的章节中加以介绍。

Additional equipment needed for network setup is specified later in this guide.

3

查找组件

Locate components



Windows CD

Windows CD



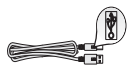
Macintosh CD

Macintosh CD



《使用手册》

User Guide



USB 电缆*

USB cable*



墨盒



print cartridges



电话线

phone cord



以太网网线（扁平头）

Ethernet cable (wider end)



控制面板盖（可能已装上）

control panel overlay
(may be attached)



电源线和适配器

power cord and adapter



送纸器纸盒

document feeder tray

* 需要单独购买。包装盒内的物品可能有所不同。

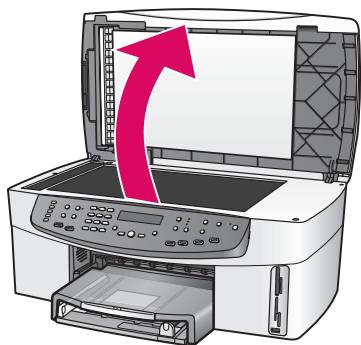
* Purchased separately. The contents of your box may differ.



4

安装控制面板盖（如果尚未安装的话）

Attach the control panel overlay (if not attached)



- a 抬起盖子。
- b 将控制面板盖对准该设备。
- c 用力按压面板盖的各边和中央，使其固定。



- a Lift the lid.
- b Align the control panel overlay with the device.
- c Press down firmly on all edges and in the center of the overlay to secure it.

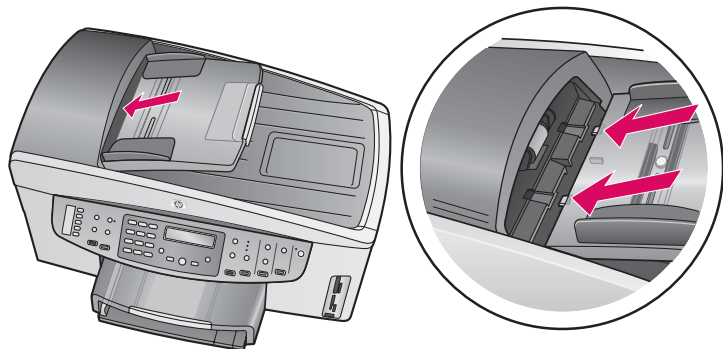
只有在安装了控制面板盖之后，才能使用 HP All-in-One!

The control-panel overlay must be attached for the HP All-in-One to work!

5

安装送纸器纸盒

Attach the document feeder tray



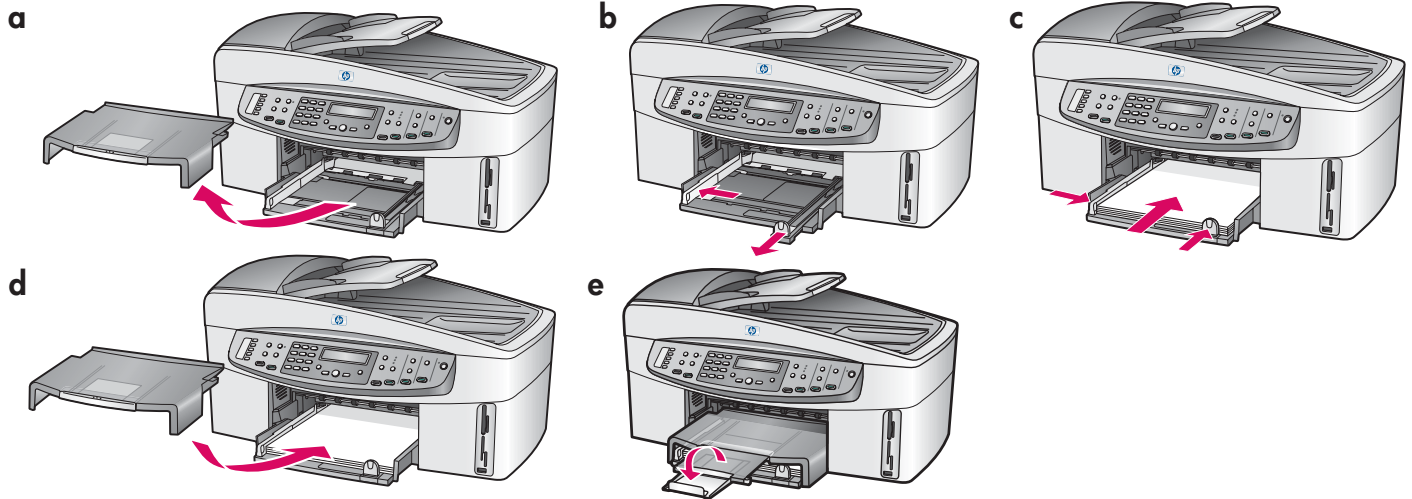
将送纸器纸盒边上的标签对准设备顶部的插槽。滑动纸盒，直到其锁定到位。

Align the tabs on the edge of the document feeder tray with the slots on the top of the device. Slide the tray until it locks into place.

6

装入普通白纸

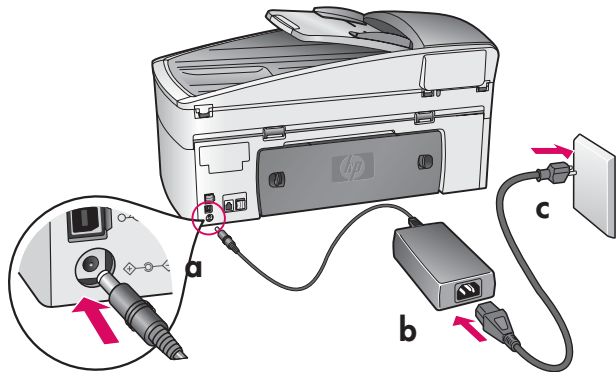
Load plain white paper



7

连接电源线和适配器

Connect the power cord and adapter



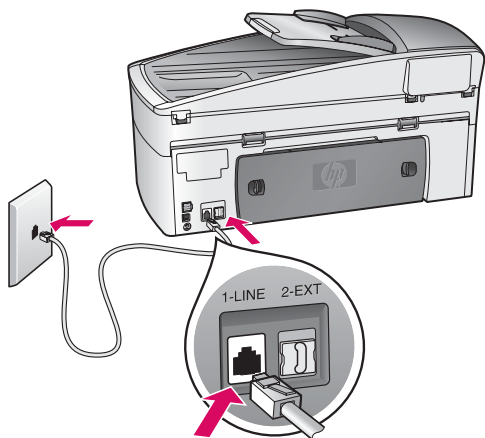
使用 **USB** 电缆的用户：除非本指南中指出可以连接 USB 电缆，否则不要使用这类电缆，以免无法正确安装软件。

USB cable users: Do not connect the USB cable until this guide instructs you to or the software may not install properly.

8

连接配套提供的电话线

Connect the supplied phone cord



将电话线的一端连到左侧 **(1-LINE)**（进线）的电话端口中，然后将另一端插入墙上的插孔中。

若要连接答录机或者使用其它的电话线，请参阅《使用手册》。

Connect one end of the supplied phone cord to the phone port on the left **(1-LINE)** and the other to a wall jack.

To connect an answering machine or use a different phone cord, see the User Guide.

9

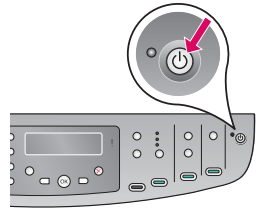
按下“打开”按钮并进行配置

Press the On button and configure

打开

On

- 按下“打开”按钮后，绿色的指示灯闪烁，随后又转入恒定状态。这可能需要 1 分钟的时间。
- 请耐心等待，直至出现语言提示。使用箭头键选择相应的语言，输入代码，然后进行确认。使用箭头键选择相应的国家/地区，输入代码，然后进行确认。

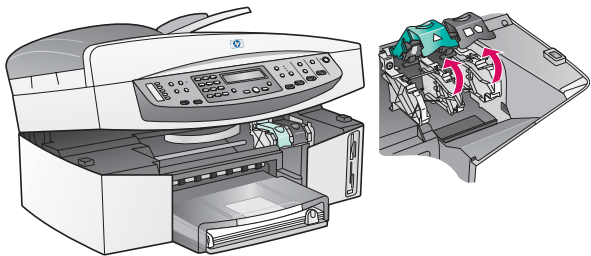


- After you press the **On** button, the green light flashes, and then becomes solid. This may take up to a minute.
- Wait for the language prompt. Use the arrow keys to select your language, type the code, and then confirm. Use the arrow keys to select your country/region, type the code, and then confirm.

10

打开检修门

Open access door



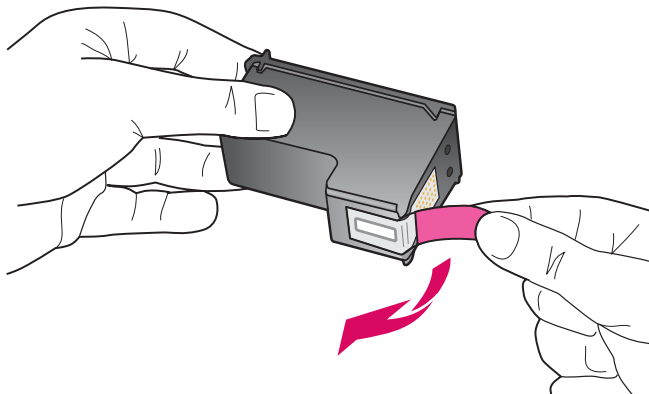
- 抬起检修门。
- 按压 HP All-in-One 两侧的绿色及黑色锁定装置，然后将其抬起来。

- Lift the access door.
- Press down and lift up the green and black latches on the inside of the HP All-in-One.

11

将两个墨盒上的胶带取下

Remove tape from both cartridges



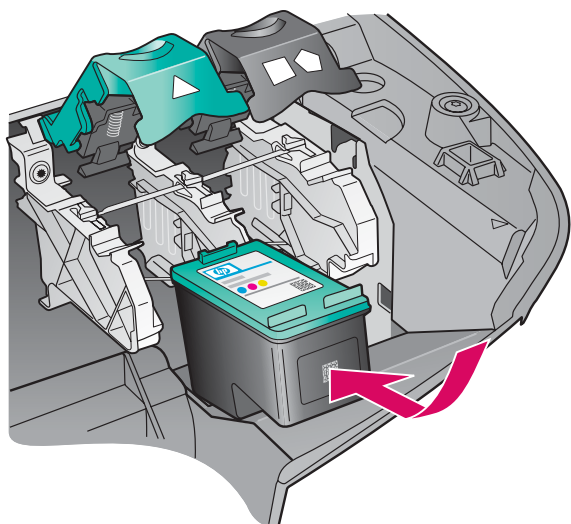
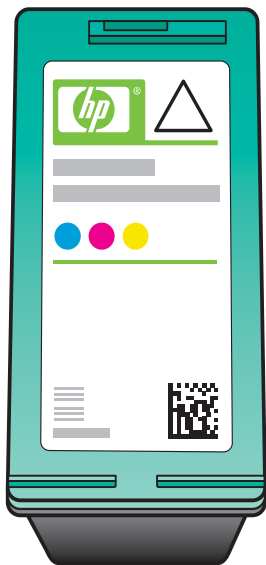
拉动粉色标签，将两个墨盒上的胶带取下。

Pull the pink tab to remove the tape from **both** print cartridges.

请勿触摸铜色触点或在墨盒上重新粘贴胶带。

Do not touch the copper-colored contacts or retape the cartridges.

Insert the tri-color print cartridge



只有打开设备后，才能继续进行操作。

- a 握住三色墨盒，使 HP 标签朝上。
- b 将三色墨盒放在左侧插槽的前方。
- c 用力将墨盒推入该插槽中，直到推不动为止。

Make sure the device is **ON** before continuing.

- a Hold the **tri-color** print cartridge with the HP label facing up.
- b Place the **tri-color** print cartridge in front of the **left** slot.
- c Push the cartridge firmly into the slot until it stops.

13

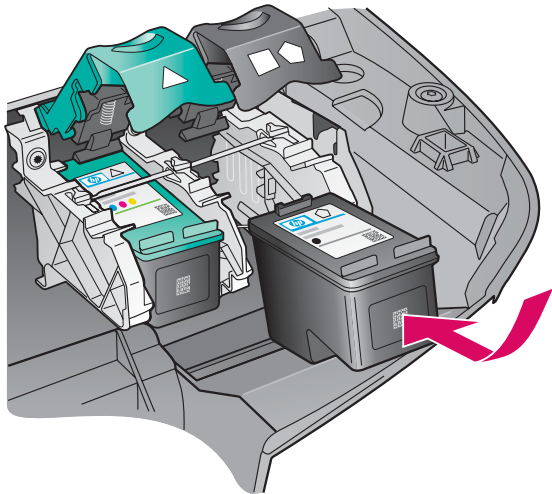
放入黑色墨盒

Insert the black print cartridge

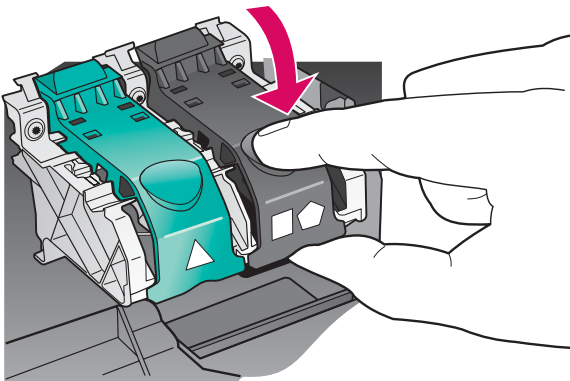


- 握住黑色墨盒，使 HP 标签朝上。
- 将黑色墨盒放在右侧插槽的前方。
- 用力将墨盒推入该插槽中，直到推不动为止。
- 按压锁定装置，将它们合上后关闭检修门。

墨盒的大小可能有所不同。



- Hold the **black** print cartridge with the HP label facing up.
- Place the **black** print cartridge in front of the **right** slot.
- Push the cartridge firmly into the slot until it snaps into place
- Push the latches down to close, and then close the access door.



The print cartridges may not be the same size.

14

校准墨盒

Align the print cartridges



- a** 每当出现提示，要求开始校准墨盒时，请按下控制面板上的“确定”。

校准过程可能需要几分钟的时间。

- b** 当打印出校准页后，校准过程便结束了。通过 HP All-in-One 上的显示屏查看相关状态，然后按“确定”。

回收或丢弃校准页。



- a** Press **OK** at each of the prompts on the control panel to start print cartridge alignment.

The alignment may take a few minutes.

- b** After the page prints, alignment is complete. Check the display on the HP All-in-One for the status, and then press **OK**.

Recycle or discard the alignment page.

15

启动计算机

Turn on your computer



- a** 启动计算机，根据需要进行登录，然后等待桌面出现。

- b** 关闭任何已打开的程序。

- a** Turn on your computer, login if necessary, and then wait for the desktop to appear.

- b** Close any open programs.

Choose ONE connection type (A or B)

A: USB 连接（尚未连接。）

如果想要将本设备直接连到计算机上，则采用这种连接类型。（除非软件提示要求这样做，否则不要采用这种连接类型。）

所需配件：USB 电缆。

有关 **USB** 的连接信息，请参见下一页 **A** 部分的说明。

A: USB Connection (Do not connect yet.)

Use this connection type if you want to connect the device directly to one computer. **(Do not connect until the software instructs you to.)**

Equipment needed: USB cable.

For a USB connection, go to Section A on the next page for instructions.

B: 以太网（布线连接）

如果想要通过以太网网线将本设备连接到网络上，则采用这种连接类型。

所需配件：集线器/路由器/交换机和以太网网线。

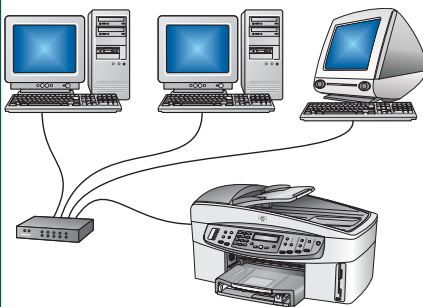
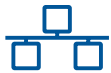
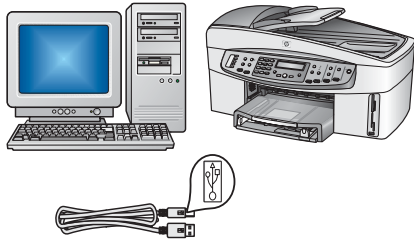
有关以太网网线的连接信息，请参见第 12 页 **B** 部分的说明。

B: Ethernet (Wired) Network

Use this connection type if you want an Ethernet cable connection between the device and your network.

Equipment needed: hub/router/switch and Ethernet cable.

For an Ethernet cable connection, go to Section B on page 12 for instructions.



如果您不打算将本设备连接到计算机或网络上，请继续参阅《使用手册》中**传真设置**一章。

If you are not connecting the device to a computer or network, continue to the **Fax Setup** chapter in the User Guide.



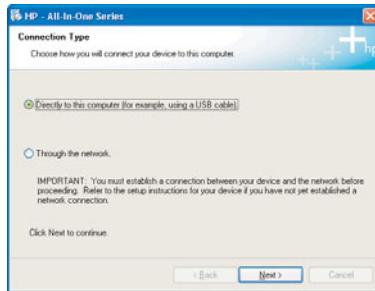
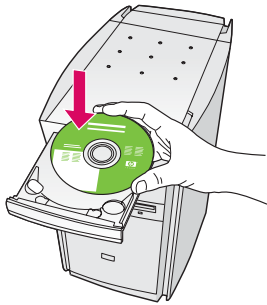
A: USB 连接

A: USB Connection

A1

放入相应的 CD

Insert the correct CD



Windows 用户:

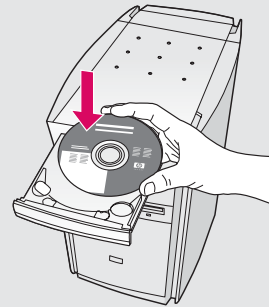
- 放入 HP All-in-One **Windows** CD。
- 按照屏幕上的说明进行操作。
- 在“连接类型”屏幕上，确保选中“直接到此计算机”选项。随后，继续转入下一页。

Windows Users:

- Insert the HP All-in-One **Windows** CD.
- Follow the onscreen instructions.
- On the **Connection Type** screen, make sure to select **directly to this computer**. Continue to the next page.

如果没有出现启动屏幕，请依次双击“我的电脑”、“CD-ROM”图标和“setup.exe”。

If the startup screen does not appear, double-click **My Computer**, double-click the **CD-ROM** icon, and then double-click **setup.exe**.



Macintosh 用户:

放入 HP All-in-One **Macintosh** CD。在安装软件之前，请转至下一步。

Macintosh Users:

Insert the HP All-in-One **Macintosh** CD. Go to the next step before installing the software.

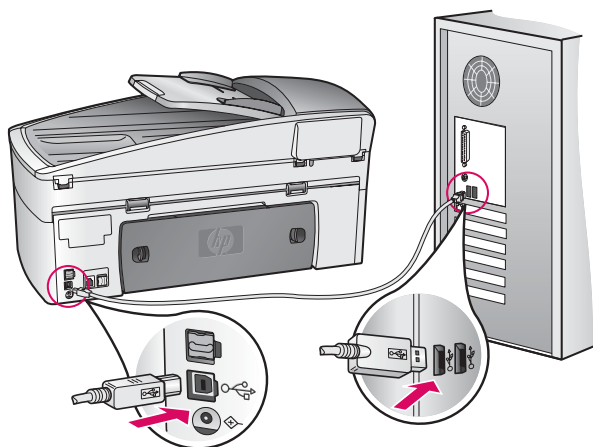
Connect the USB cable

Windows 用户：

- α 您可能需要等待几分钟，才能在屏幕上看到连接 USB 电缆的提示。当出现上述提示后，请将 USB 电缆的一端连接到 HP All-in-One 背面的端口中，然后再将电缆的另一端连接到计算机上任意的 **USB** 端口中。

Windows Users:

- α You may have to wait several minutes before you see the onscreen prompt to connect the USB cable. Once the prompt appears, connect the USB cable to the port on the back of the HP All-in-One, and then to **any USB port** on your computer.

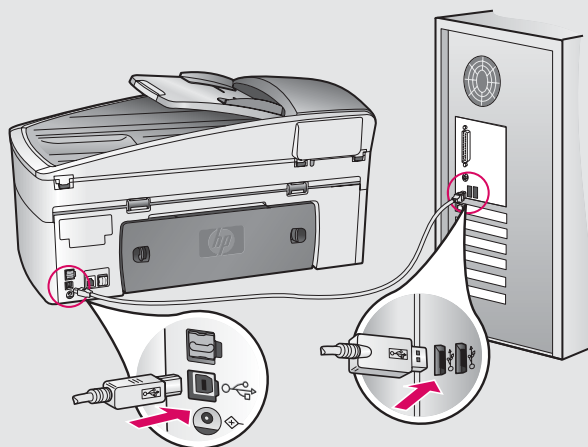


Macintosh 用户：

- α 将 USB 电缆的一端连接到 HP All-in-One 背面的端口中，然后再将电缆的另一端连接到计算机上任意的 **USB** 端口中。

Macintosh Users:

- α Connect the USB cable to the port on the back of the HP All-in-One, and then to **any USB port** on your computer.



Continued

如果在这一步没有看到该屏幕，请参阅最后一节中的疑难排解。

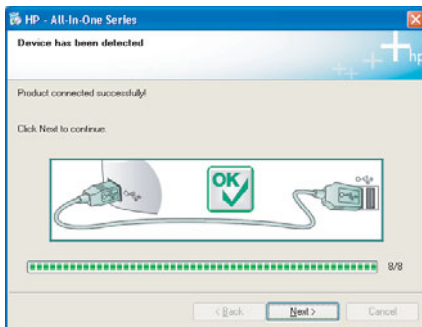
If you do not see the screens shown in this step, see **Troubleshooting** in the last section.

Windows 用户：

b 根据传真设置向导和立即注册屏幕上的说明完成相应的操作。

Windows Users:

b Follow the onscreen instructions to complete the **Fax Setup Wizard** and **Sign up now** screens.



Macintosh 用户：

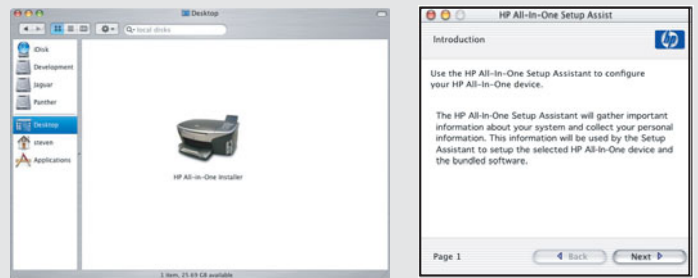
b 双击“HP All-in-One Installer”图标。

c 确保已完成所有屏幕上的操作，其中包括 Setup Assistant（安装帮助）。必须选择“USB”。此外，还必须单击 Print Center（打印中心）按钮，将 HP All-in-One 添加到打印机列表中。

Macintosh Users:

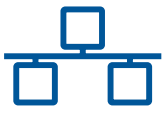
b Double-click the **HP All-in-One Installer** icon.

c Make sure you complete all screens, including the Setup Assistant. You must select **USB**. Also, you must click the **Print Center** button to add the HP All-in-One to your printer list.



转至第 14 页上的步骤 17。

Go to step 17 on page 14.



B: 以太网（布线连接）

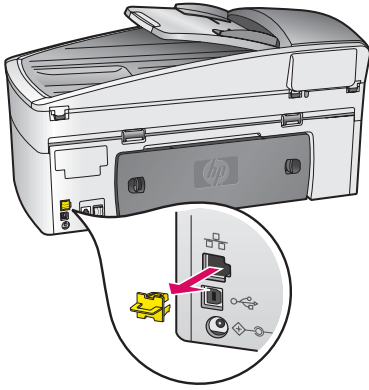
B: Ethernet (Wired) Network

B1

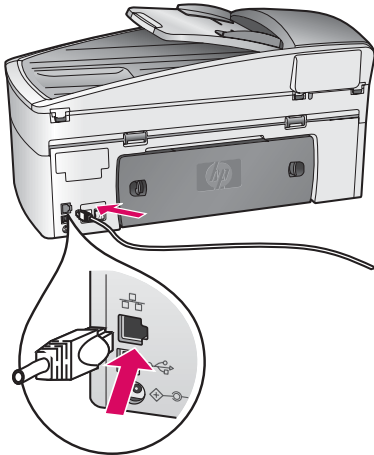
连接以太网网线

Connect the Ethernet cable

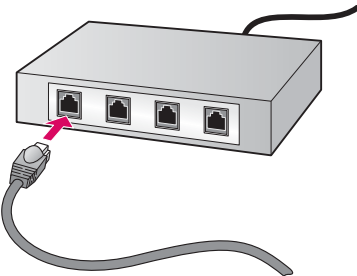
a



b



c



a 从本设备的背面取下黄色的插塞。

b 将以太网网线的一端连接到本设备背面的以太网端口中。

c 将该网线的另一端连接到集线器/路由器/交换机上。如果该网线不够长，请购置长一些的网线。随后，继续转入下一页。

注意： 不要将以太网网线连接到有线电视调制解调器上。所用的网络必须能够正常运行。如果已连接了 USB 电缆，请不要连接以太网网线。

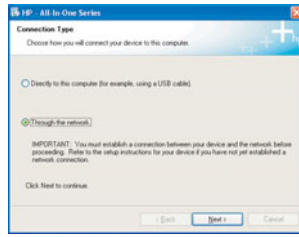
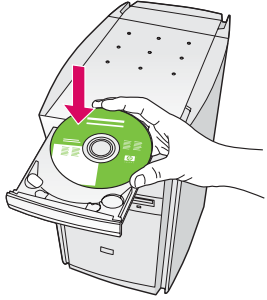
a Remove the yellow plug from the back of the device.

b Connect one end of the Ethernet cable to the Ethernet port on the back of the device.

c Connect the other end of the Ethernet cable to the hub/router/switch. If the cable is not long enough, you can purchase a longer cable. Continue to the next page.

Important: Do not connect the Ethernet cable to a cable modem. You must have a working network. If you already connected the USB cable, do not connect the Ethernet cable.

Choose the correct CD



Windows 用户:

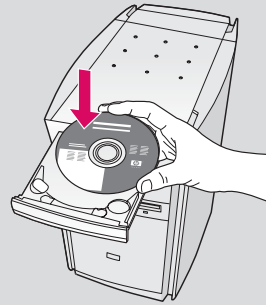
- 放入 HP All-in-One **Windows** CD。
- 按照屏幕上的说明进行操作。
- 在“连接类型”屏幕上，确保选中“通过网络连接”选项。
- 按照屏幕上的说明进行操作。必须同时接受防火墙消息，否则设置将会失败。

Windows Users:

- Insert the HP All-in-One **Windows** CD.
- Follow the onscreen instructions.
- On the **Connection Type** screen, make sure to select **through the network**.
- Follow the onscreen instructions. You must accept both firewall messages or setup will fail.

如果没有出现启动屏幕，请依次双击“我的电脑”、“CD-ROM”图标和“setup.exe”。

If the startup screen does not appear, double-click **My Computer**, double-click the **CD-ROM** icon, and then double-click **setup.exe**.

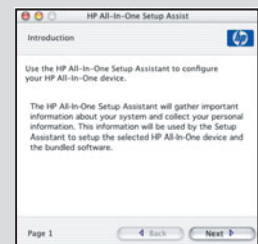
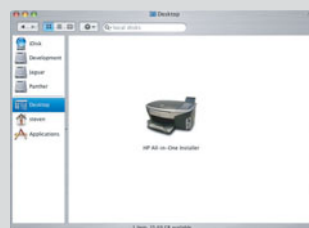


Macintosh 用户:

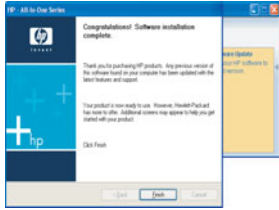
- 放入 HP All-in-One **Macintosh** CD。
- 双击“**HP All-in-One Installer**”图标。
- 确保已完成所有屏幕上的操作，其中包括 Setup Assistant（安装帮助）。必须选择“TCP/IP”。此外，还必须单击 **Print Center**（打印中心）按钮，将 HP All-in-One 添加到打印机列表中。

Macintosh Users:

- Insert the HP All-in-One **Macintosh** CD.
- Double-click the **HP All-in-One Installer** icon.
- Make sure you complete all screens, including the Setup Assistant. You must select **TCP/IP**. Also, you must click the **Print Center** button to add the HP All-in-One to your printer list.



Congratulations



当看见“祝贺您！”屏幕时，就可以使用 HP All-in-One 了。请查阅《使用手册》或屏幕上的帮助信息，以便着手使用本设备。

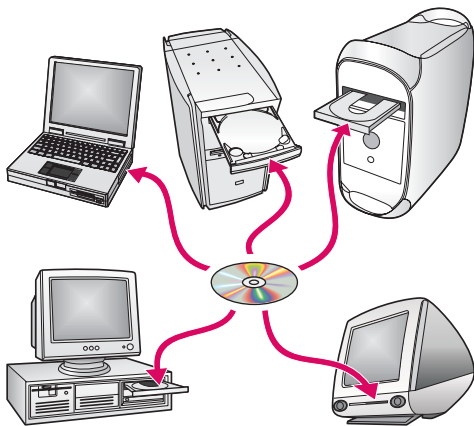
如果网络中还有其它的计算机，请继续执行下一步操作。

When you see the **Congratulations!** screen, you are ready to use your HP All-in-One. See the User Guide or onscreen help to get started.

If you have additional computers on your network, go to the next step.

在其它的计算机上安装相应的软件（可选操作）

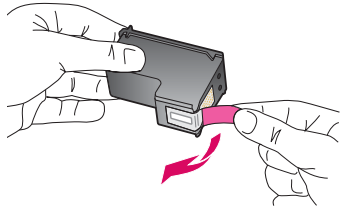
Set up additional computers (optional)



如果网络中有其它的计算机，则在每台计算机上安装 HP All-in-One 软件。按照屏幕上的说明进行操作。请务必选择 HP All-in-One 与网络之间的连接类型（并非计算机与网络之间的连接类型）。

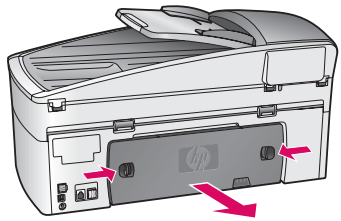
If you have additional computers on your network, then install the HP All-in-One software on each computer. Follow the onscreen instructions. Make sure that you choose the connection type between the network and your HP All-in-One (not between your computer and the network).

疑难排解



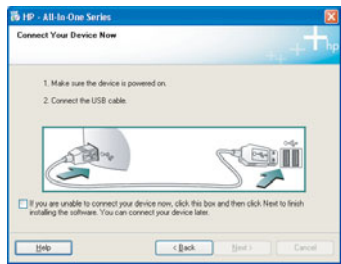
问题：装入墨盒后，出现“取出并检查墨盒”消息。

解决办法：取出墨盒。确保已取下所有铜色触点上的胶带。关闭检修门。关闭检修门。



问题：卡纸。

解决办法：先关闭本设备，然后再取下后面的检修门。将纸轻轻地拉出来。打开本设备。重新装纸。



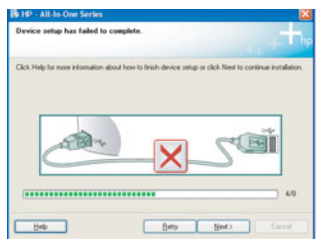
问题：屏幕上不显示连接 USB 电缆的提示信息。

解决办法：取出并重新放入 HP All-in-One Windows CD。有关信息，请参阅 A 部分。



问题：出现“Microsoft 添加硬件”屏幕。

解决办法：单击“取消”。拔掉 USB 电缆，然后放入 HP All-in-One Windows CD。有关信息，请参阅 A 部分。



问题：出现“设备安装失败”屏幕。

解决办法：检查控制面板盖是否已安装牢固。断开 HP All-in-One 的连接后，再重新进行连接。检查所有的连接。确保 USB 电缆已插在计算机上。不要将 USB 电缆插在键盘或无源集线器上。有关信息，请参阅 A 部分。



问题：无法安装 Macintosh 软件。

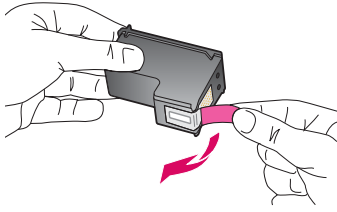
解决办法：在安装软件之前，请确保 USB 电缆已插在计算机上。不要将 USB 电缆插在键盘或无源集线器上。有关信息，请参阅 A 部分。有关网络软件的问题，请参阅《使用手册》。

有关详细信息，请参阅《使用手册》。使用再生纸印刷。
如果需要帮助，请访问 www.hp.com/support。

Troubleshooting

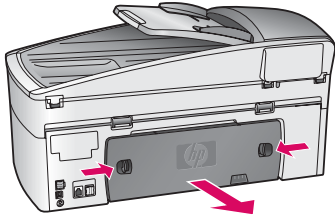


Q5560-90167



Problem: The **Remove and check print cartridges** message appears after you insert print cartridges.

Action: Remove print cartridges. Make sure you remove all tape from copper contacts. Close the access door.



Problem: The paper has jammed.

Action: Turn off the device, and then remove the back door. Gently pull out any paper. Turn the device on. Load the paper again.



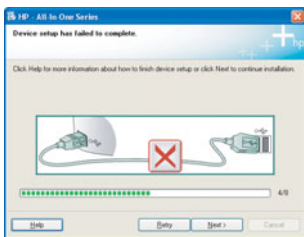
Problem: You did not see the screen prompting you to connect the USB cable.

Action: Remove, and then re-insert the HP All-in-One **Windows** CD. Refer to Section A.



Problem: The **Microsoft Add Hardware** screen appears.

Action: Click **Cancel**. Unplug the USB cable, and then insert the HP All-in-One **Windows** CD. Refer to Section A.



Problem: The **Device Setup Has Failed To Complete** screen appears.

Action: Verify that the control panel overlay is firmly attached. Unplug the HP All-in-One and plug it in again. Check all connections. Make sure the USB cable is plugged into the computer. Do not plug the USB cable into a keyboard or non-powered hub. Refer to Section A.



Problem: The Macintosh software does not install.

Action: Make sure the USB cable is plugged into the computer before installing the software. Do not plug the USB cable into a keyboard or non-powered hub. Refer to Section A. For network software problems, see the User Guide.

Refer to the User Guide for more information. Printed on recycled paper.
Visit www.hp.com/support for assistance.

